



Deni Associates

7025 N.W. 4th St. • Plantation, Florida 33317

LEE COUNTY, FLORIDA
AERIAL MAPPING PROJE

MAPPING BY
HAMRICK AERIAL SURVEYS, INC
CLEARWATER, FLORIDA

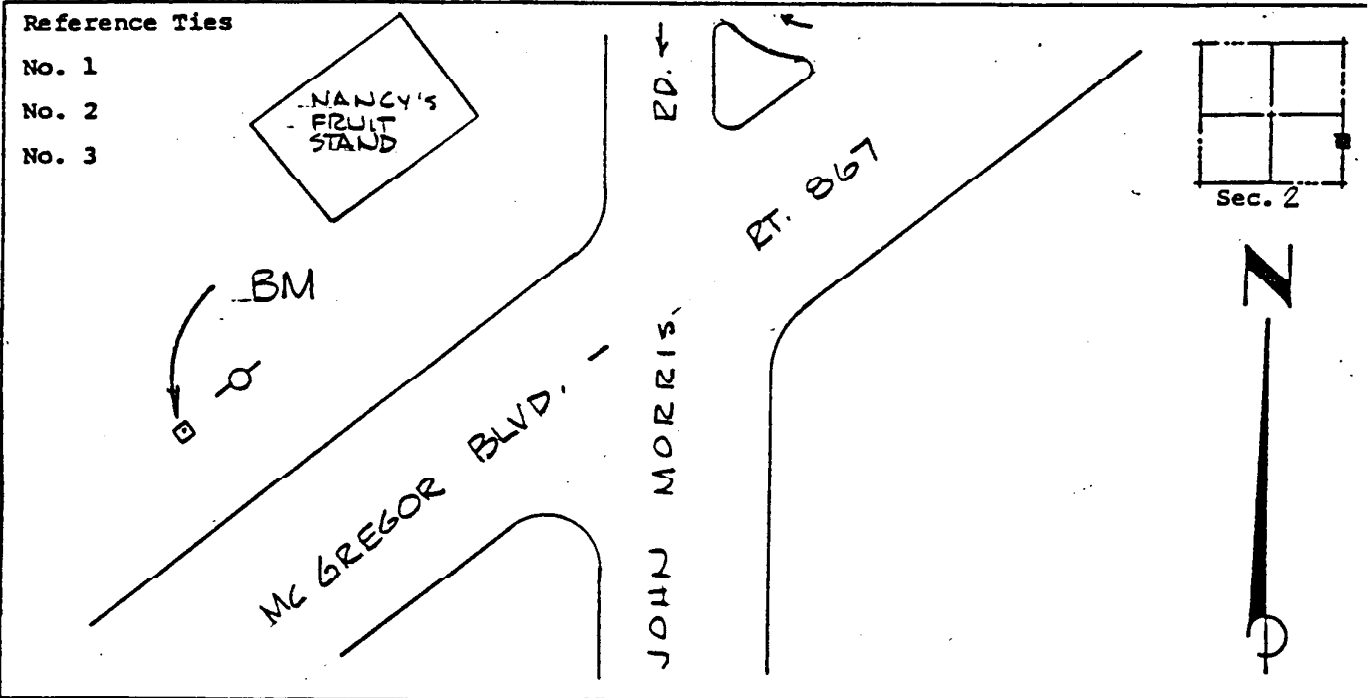
Marker Designation USC & GS N-242 County LEE State FL
 Located in Sec. 2 Twp. 46 S. Rge. 23 E. U.S.G.S. Quad Map FT. MYERS BEACH 7.5mi
 To reach point from INT. OF RT. 865/SAN CARLOS BLVD. & RT. 867/
MC GREGOR BLVD. IN SEC. 31-45-24: 60 SW 1.9 MI. = TO
JOHN MORRIS RD. & BM

Type of Marker STANDARD DISC ON LONG. POST Date ^{recovered} ~~set~~ AUGUST 19 80
 HORIZONTAL CONTROL originated on 2nd order control established by FLA. D. O. T.
 in _____, on North American 1927 datum. agency _____
 in _____ year
 Coordinates: North (y) _____ East (x) _____
 (feet)
3rd Order State and Zone Florida, Mercator West

Reference Bearings to Station or Object:

Description	Bearing	Distance

Field Book _____ Page _____ Sketch by D.W. ALBERTSEN



VERTICAL CONTROL originated on 1st order control established by USC & GS agency _____
 in 1966, on National Geodetic Survey Datum of 1929 datum.
 year
 Elevation 05.577, 3rd Order Level Book _____ Page _____
 (feet)