

LEE COUNTY, FLORIDA  
AERIAL MAPPING PROJECT

MAPPING BY  
HAMRICK AERIAL SURVEYS, INC.  
CLEARWATER, FLORIDA



Deni Associates  
RT. 3, 11333 MARSHWOOD LN. SW.  
FORT MYERS, FL 33908

DESIGNATION USC 865 M 242 COUNTY LEE STATE FL  
LOCATED IN SEC 1 TWP 46S RGE 23E USGS QUAD MAP FT MYERS SW

TO REACH SURVEY MARK FROM INT. OF MCGREGOR BLVD. & GLADIOLUS DR. IN SW.  
FORT MYERS: GO SW. ON MCGREGOR BLVD. 1.0 MI. ± TO KELLY RD.  
& MARK.

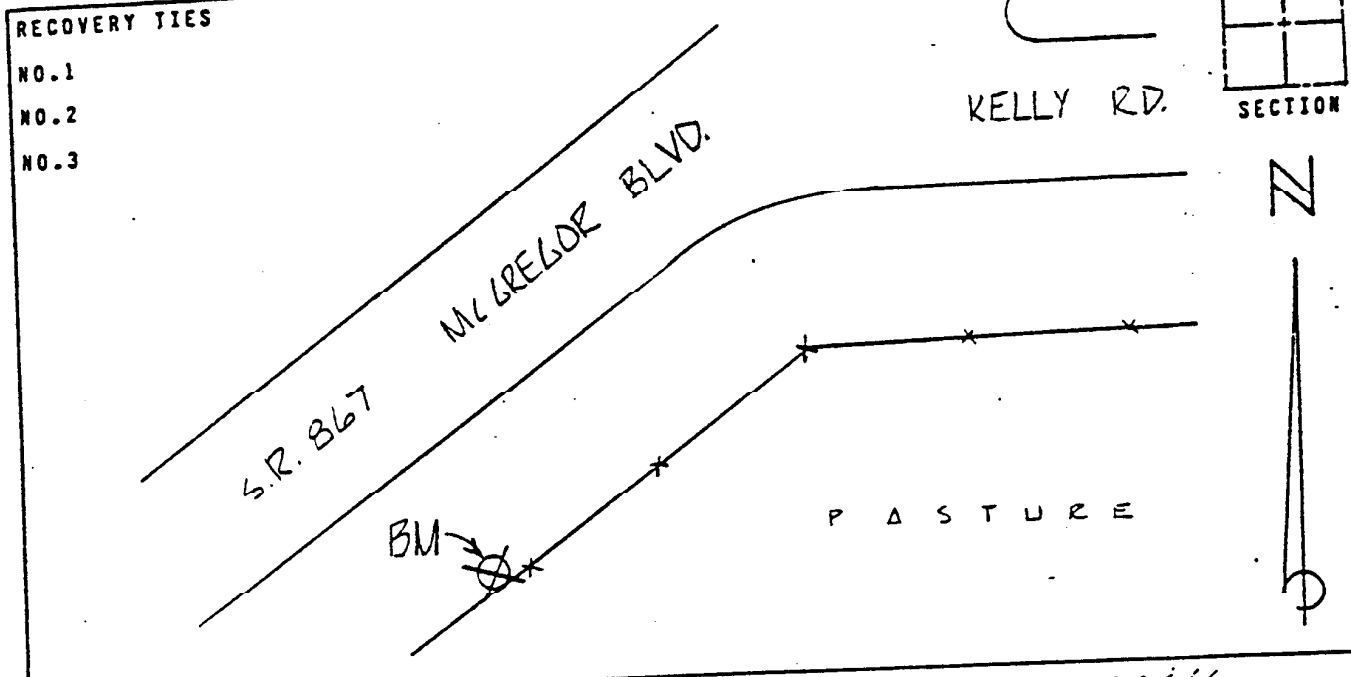
TYPE OF MARK STD. USC 865 DISC IN CONC, FLUSH DATE RECOVERED DEC. 19 81

HORIZONTAL CONTROL ORIGINATED ON \_\_\_\_\_ ORDER CONTROL ESTABLISHED BY \_\_\_\_\_  
IN \_\_\_\_\_, ON \_\_\_\_\_ EAST (X) \_\_\_\_\_

COORDINATES (FT) NORTH (Y) \_\_\_\_\_ EAST (X) \_\_\_\_\_  
\_\_\_\_\_ ORDER STATE AND ZONE \_\_\_\_\_

REFERENCE BEARINGS TO STATION OR OBJECT	BEARING	DISTANCE
DESCRIPTION		
_____	_____	_____
_____	_____	_____

FIELD BOOK \_\_\_\_\_ PAGE \_\_\_\_\_ SKETCH BY D.W. Albertsen



VERTICAL CONTROL ORIGINATED ON 1<sup>ST</sup> ORDER CONTROL ESTABLISHED BY USC 865  
IN 1966, ON NATIONAL GEODETIC VERTICAL DATUM 1929.

ELEVATION (FT) 07.739, 1<sup>ST</sup> ORDER LEVEL BOOK V5 PAGE 54