



Deni Associates

7025 N.W. 4th St. - Plantation, Florida 33317

LEE COUNTY, FLORIDA AERIAL MAPPING PROJECT

MAPPING BY
HAMRICK AERIAL SURVEYS, INC.
CLEARWATER, FLORIDA

Marker Designation Tidal Sta 13A Tidal 2 County LEE State FL
Located in Sec. 2 Twp. 46S Rge. 22E U.S.G.S. Quad Map Sanibel 7.5min.

To reach point from INT. OF SR. 78 & 767 IN PINE ISLAND CENTER: GO S. ON SR 767
8.7 MI. TO 1ST ST. IN ST. JAMES CITY & MARKER.

Type of Marker USC&GS Bench Mark Disk Date ^{RECOVERED} set MAY 19 81

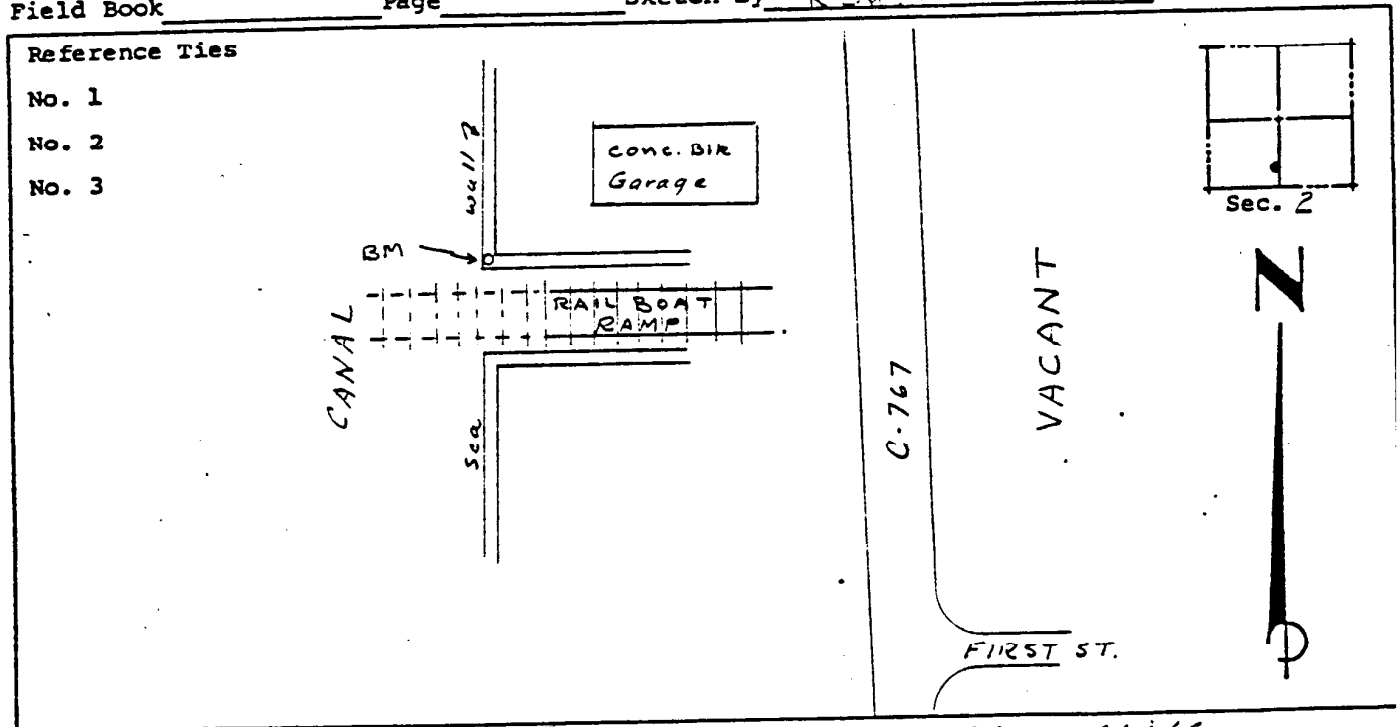
HORIZONTAL CONTROL originated on _____ order control established by _____ agency
in _____, on _____ North American 1927 datum.
year _____

Coordinates: North (y) _____ East (x) _____
(feet) _____
3rd Order State and Zone Florida, Mercator West

Reference Bearings to Station or Object:

Description	Bearing	Distance

Field Book _____ Page _____ Sketch by Ranfro



VERTICAL CONTROL originated on 1ST order control established by USC&GS agency
in 1966, on National Geodetic Survey Datum of 1929 datum.
year _____

Elevation 3.29, 3rd Order Level Book V4 Page 18
(feet)