



Deni Associates

7025 N.W. 4th St. • Plantation, Florida 33317

LEE COUNTY, FLORIDA AERIAL MAPPING PROJECT

MAPPING BY
HAMRICK AERIAL SURVEYS, INC.
CLEARWATER, FLORIDA

Marker Designation US 63 BM W 244 County LEE State FL
Located in Sec. 28 Twp. 46 S. Rge. 25 E. U.S.G.S. Quad Map ESTERO 7.5min.

To reach point from U.S. 41 BRIDGE OVER ESTERO RIVER IN ESTERO:
GO N. 0.5 MI. TO BROADWAY; THEN CONTINUE N. 200 FT. TO BM.

Type of Marker STD. US 63 DISC IN CONC. FLUSH W. GROUND Date set JAN. 19 81 ^{REMOVED}

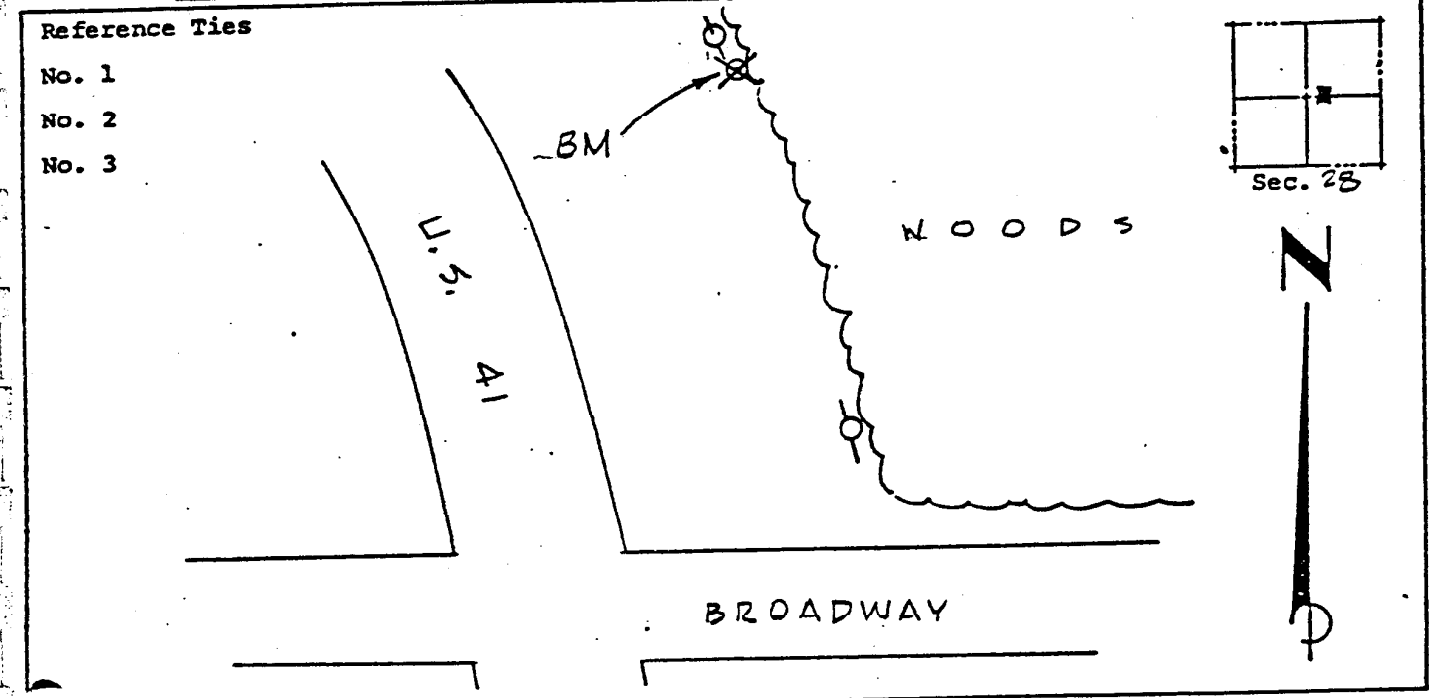
HORIZONTAL CONTROL originated on _____ order control established by _____ agency
in _____, on North American 1927 datum.

Coordinates: North (y) _____ East (x) _____
(feet) 3rd Order State and Zone Florida, Mercator West

Reference Bearings to Station or Object:

| Description | Bearing | Distance |
|-------------|---------|----------|
| | | |
| | | |
| | | |

Field Book _____ Page _____ Sketch by D.W. ALBERTSEN



VERTICAL CONTROL originated on 1st order control established by US 63 agency

in 1966, on National Geodetic Survey Datum of 1929 datum.
Elevation 13.556, ^{1st} 3rd Order Level Book V1 Page 42
(feet)