



Deni Associates

7025 N.W. 4th St. · Plantation, Florida 33317

LEE COUNTY, FLORIDA
AERIAL MAPPING PROJECT

MAPPING BY
HAMRICK AERIAL SURVEYS, INC
CLEARWATER, FLORIDA

Marker Designation TBM FMBV-33 County LEE State FL

Located in Sec. 34 Twp. 46S Rge. 25E U.S.G.S. Quad Map ESTERO 7.5mi

To reach point from US 41 BRIDGE OVER ESTERO RIVER IN ESTERO:
GO N. 0.5 MI ± TO ROADWAY; THENCE GO E. 0.4 MI ± TO
SANDY LN., THENCE S 0.5 MI ± TO BRIDGE OVER ESTERO RIVER
& TBM

Type of Marker CHISELED "O" ON S.E. END OF BRIDGE Date set JANUARY 19 51

HORIZONTAL CONTROL originated on _____ order control established by _____

in _____, on _____ North American 1927 _____ datum. _____ agency

Coordinates: North (y) _____ East (x) _____
(feet)

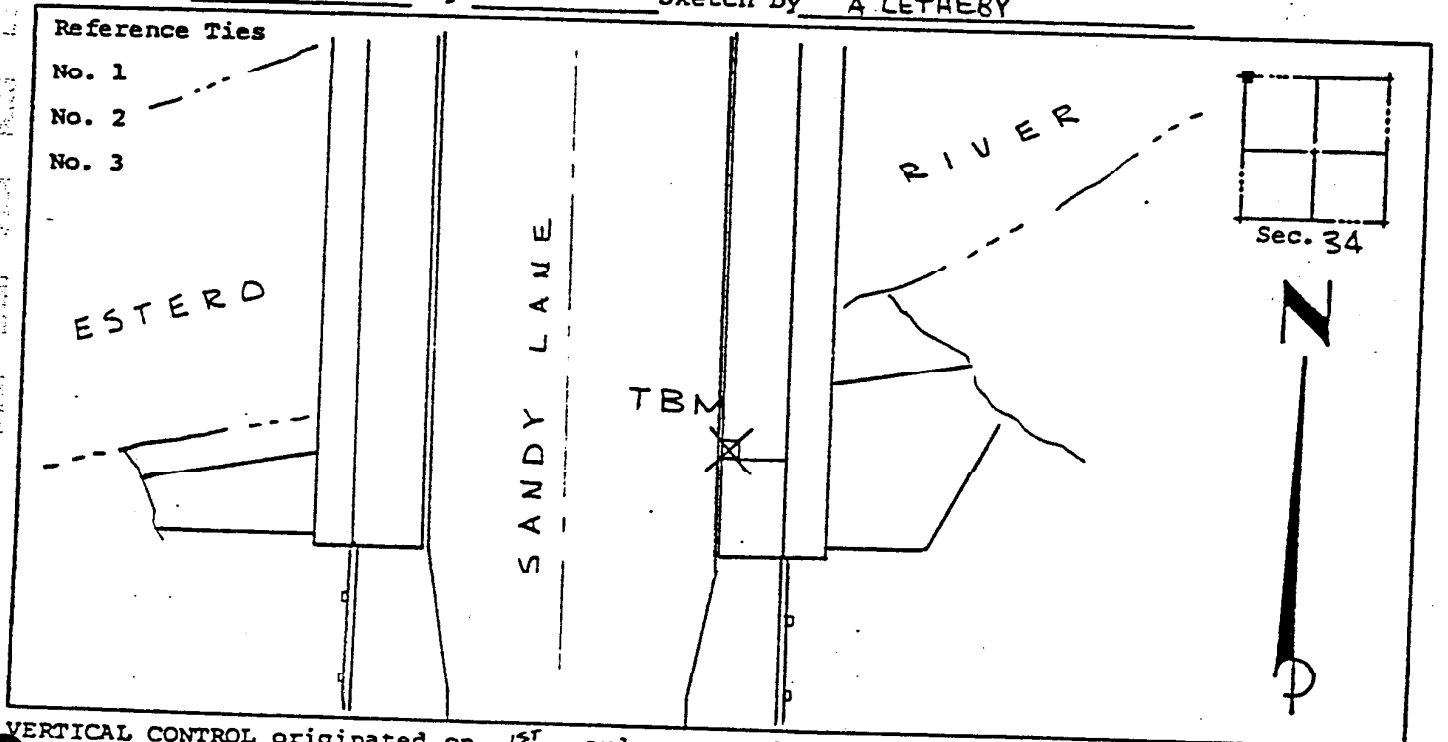
3rd Order

State and Zone Florida, Mercator West

Reference Bearings to Station or Object:

Description	Bearing	Distance

Field Book _____ Page _____ Sketch by A. LETHEBY



VERTICAL CONTROL originated on 1ST order control established by USC & GS

in 1966, on National Geodetic Survey Datum of 1929 datum. _____ agency

year _____
Elevation 12.96, 3rd Order Level Book V1 Page 42
(feet)