



**Deni Associates**  
 RT. 3, 11335 MARSHWOOD LN. S.W.  
 FORT MYERS, FL 33908

LEE COUNTY, FLORIDA  
 AERIAL MAPPING PROJECT

MAPPING BY  
 HAMRICK AERIAL SURVEYS, INC.  
 CLEARWATER, FLORIDA

DESIGNATION TBM SFMV-54 COUNTY LEE STATE FL.

LOCATED IN SEC 27 TWP 46S RGE 25E USGS QUAD MAP ESTERO

TO REACH SURVEY MARK FROM INT. OF US 41 & BROADWAY RD. IN ESTERO:  
GO E. ON BROADWAY 0.9 MI. ± TO MARK.

TYPE OF MARK TOP OF EXISTING CONC. MON. DATE SET MAY 1982

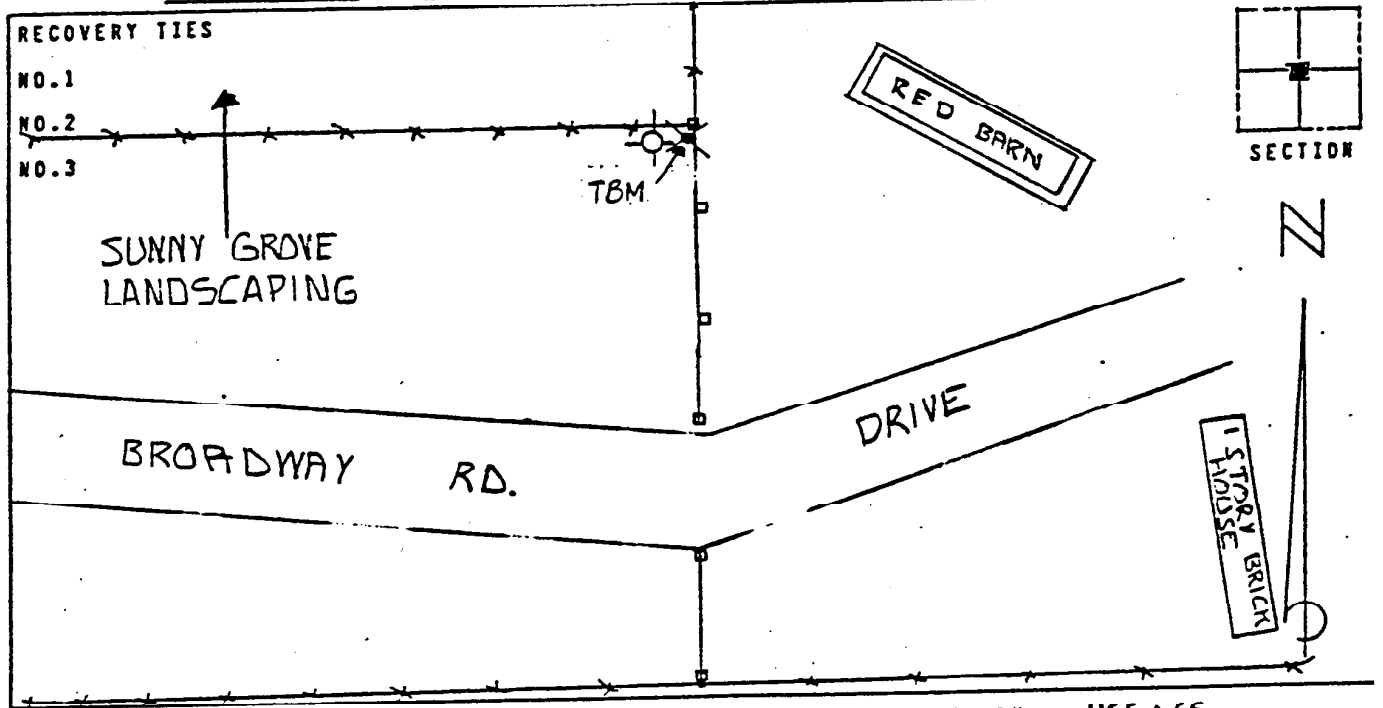
HORIZONTAL CONTROL ORIGINATED ON \_\_\_\_\_ ORDER CONTROL ESTABLISHED BY \_\_\_\_\_  
 IN \_\_\_\_\_, ON \_\_\_\_\_

COORDINATES (FT) NORTH (Y) \_\_\_\_\_ EAST (X) \_\_\_\_\_  
 \_\_\_\_\_ ORDER STATE AND ZONE \_\_\_\_\_

REFERENCE BEARINGS TO STATION OR OBJECT

DESCRIPTION	BEARING	DISTANCE

FIELD BOOK \_\_\_\_\_ PAGE \_\_\_\_\_ SKETCH BY FILE



VERTICAL CONTROL ORIGINATED ON 1ST. ORDER CONTROL ESTABLISHED BY USC & GS  
 IN 1966, ON NATIONAL GEODETIC VERTICAL DATUM 1929

ELEVATION (FT) 14.37, 3RD ORDER LEVEL BOOK V9 PAGE 42