



Dani Associates

7025 N.W. 4th St. - Plantation, Florida 33317

LEE COUNTY, FLORIDA  
U.S.D.A. SOIL CONSERVATION SERVICE

MAPPING BY

HAMRICK AERIAL SURVEYS, INC.  
CLEARWATER, FLORIDA

Marker Designation SLS-10 & TBM County LEE State FL

Located in Sec. 1 Twp. 13 S Rge. 25 E, U.S.G.S. Quad Map TULKERS CORNER 7.5min.

To reach point from INT. OF US. 41 & SR 78 IN N. FT. MYERS. GO E. ON SR. 78  
9.65 MI. TO SR. 31. THENCE N. 1.7 MI. TO SHOP & GO STORE. THENCE W.  
ON DIRT RD. 0.6 MI. TO SHIRLEY LN. THENCE N. 0.6 MI. TO MARKER.

Type of Marker 2" LEE CO. DISC. FLUSH W. GROUND Date set NOV. - DEC. 19 80

HORIZONTAL CONTROL originated on 2<sup>ND</sup> order control established by FLA. D.O.T. agency

in 1969, on North American 1927 datum.

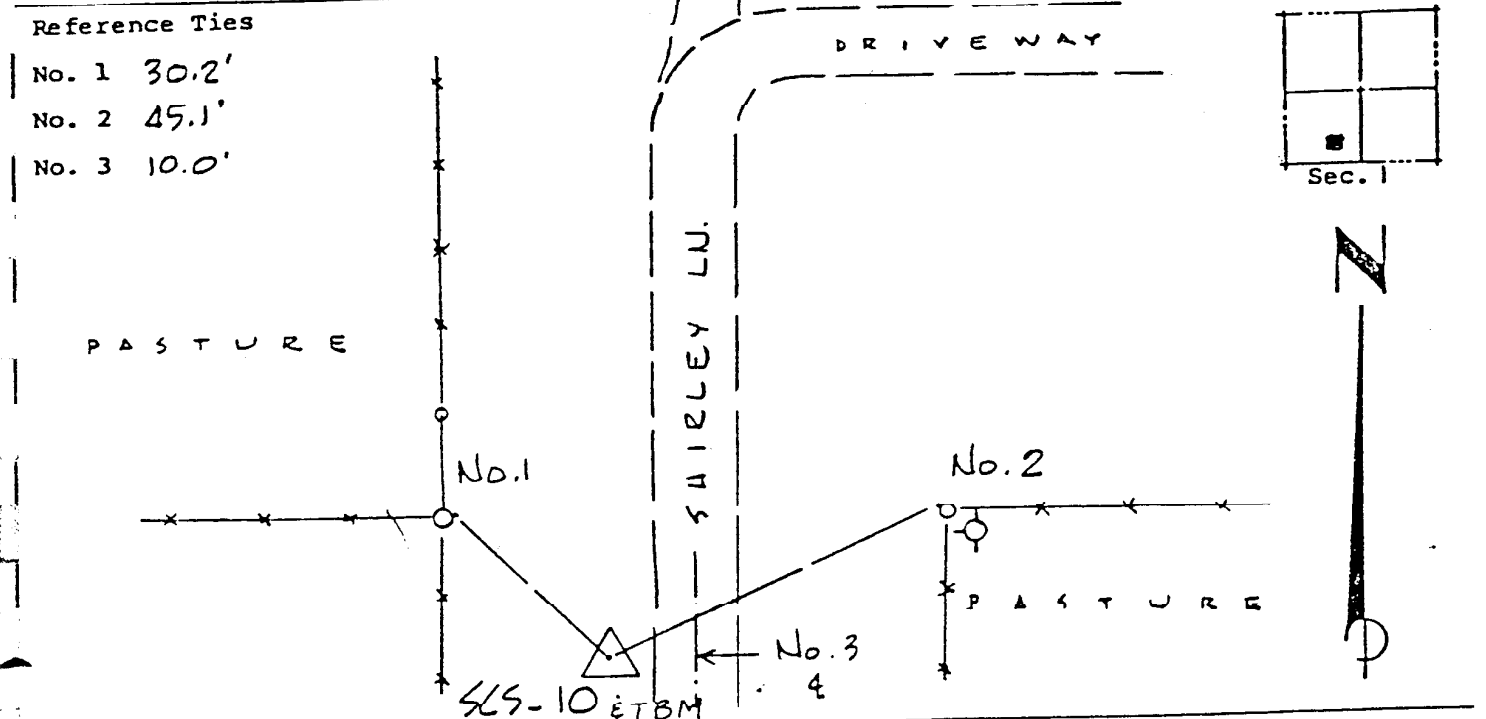
Coordinates: North (y) 880655.769 East (x) 574647.032

(feet) 3rd Order State and Zone Florida, Mercator West

Reference Bearings to Station or Object:

Description	Bearing	Distance
<u>SLS-9</u>	<u>S 0° 37' 33.2" E</u>	<u>1317.091</u>
<u>SLS-11</u>	<u>N 89° 09' 22.2" E</u>	<u>3304.302</u>

Field Book 1 Page 12 Sketch by D.W. ALBERTSEN



VERTICAL CONTROL originated on 1<sup>ST</sup> order control established by U.S.C. & G.S. agency

in 1966, on National Geodetic Survey Datum of 1929 datum.

year 1966 elevation 25.91 3rd Order Level Book 2 Page 5