



Deni Associates

7025 N.W. 4th St. - Plantation, Florida 33317

LEE COUNTY, FLORIDA AERIAL MAPPING PROJECT

MAPPING BY
HAMRICK AERIAL SURVEYS, INC.
CLEARWATER, FLORIDA

Marker Designation TBM FMBV-39 County LEE State FL
Located in Sec. 16 Twp. 46 S Rge. 25 E U.S.G.S. Quad Map ESTERO 7.5min.

To reach point from U.S. 91 BRIDGE OVER ESTERO RIVER IN ESTERO:
GO N. 2.15 MI. ± TO SAN CARLOS BLVD.; THEN NE 0.55 MI. ±
TO MATANZAS RD.; THEN SE 1.0 MI. ± TO ORIOLE RD;
THEN SE 100 FT ± TO TBM.

IN SAN CARLOS PARK

Type of Marker 8" SPK IN P. POLE AT 90° & IN POWER LINES Date set JAN, 19 81

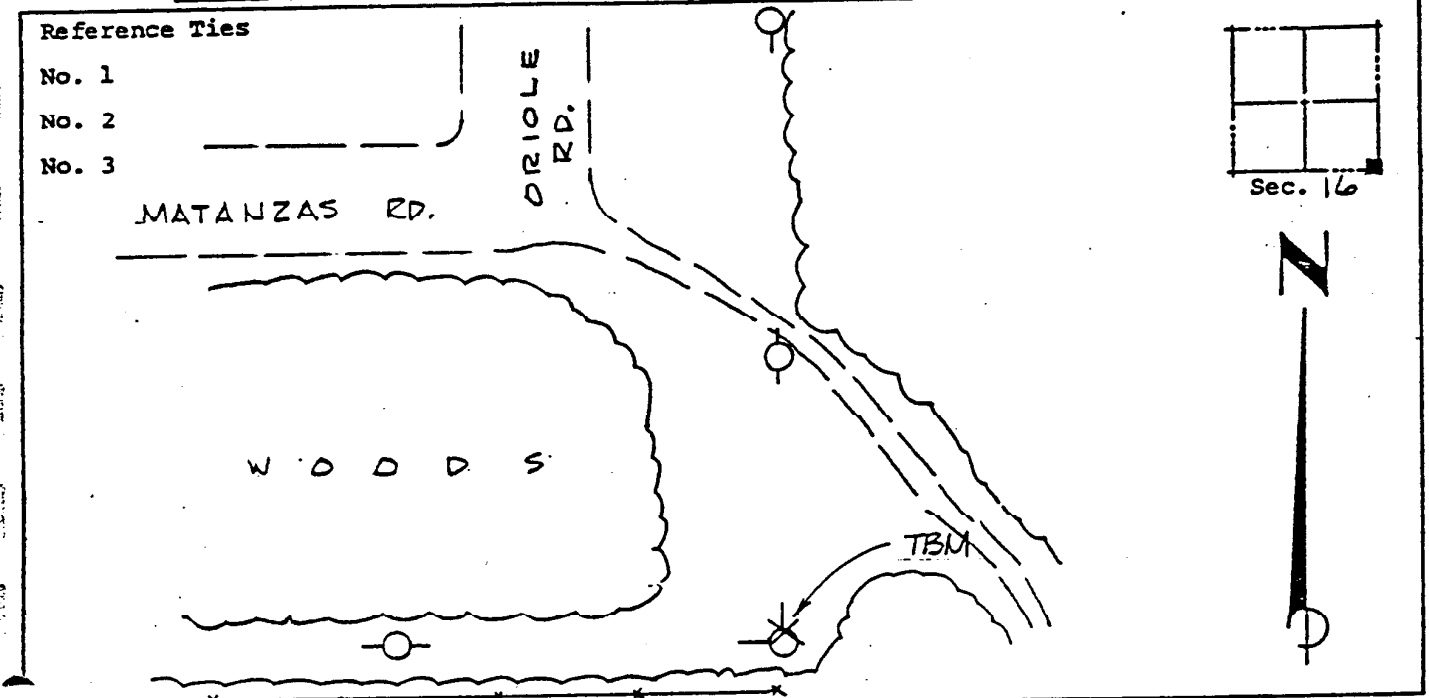
HORIZONTAL CONTROL originated on _____ order control established by _____ agency
in _____, on _____ North American 1927 _____ datum.

Coordinates: North (y) _____ East (x) _____
(feet) 3rd Order State and Zone Florida, Mercator West

Reference Bearings to Station or Object:

Description	Bearing	Distance

Field Book _____ Page _____ Sketch by D.W. ALBERTSEN



VERTICAL CONTROL originated on 1st order control established by USGS agency

in 1966, on National Geodetic Survey Datum of 1929 datum.

Elevation 15.76, 3rd Order Level Book V1 Page 44
(feet)