



Deni Associates

7025 N.W. 4th St. - Plantation, Florida 33317

LEE COUNTY, FLORIDA
AERIAL MAPPING PROJECT

MAPPING BY
HAMRICK AERIAL SURVEYS, INC.
CLEARWATER, FLORIDA

Marker Designation USC 465 BM X 244 County LEE State FL

Located in Sec. 21 Twp. 46 S. Rge. 25 E. U.S.G.S. Quad Map ESTERO 7.5min.

To reach point from US. 41 BRIDGE OVER ESTERO RIVER IN ESTERO:
GO N. 1.3 MI. ± TO BM

Type of Marker STD. FLA. SED BM DISC ON CONK. HEADWALL Date ^{Recovered} JAN. 19 81

HORIZONTAL CONTROL originated on _____ order control established by _____

in _____, on _____ North American 1927 _____ datum. _____ agency

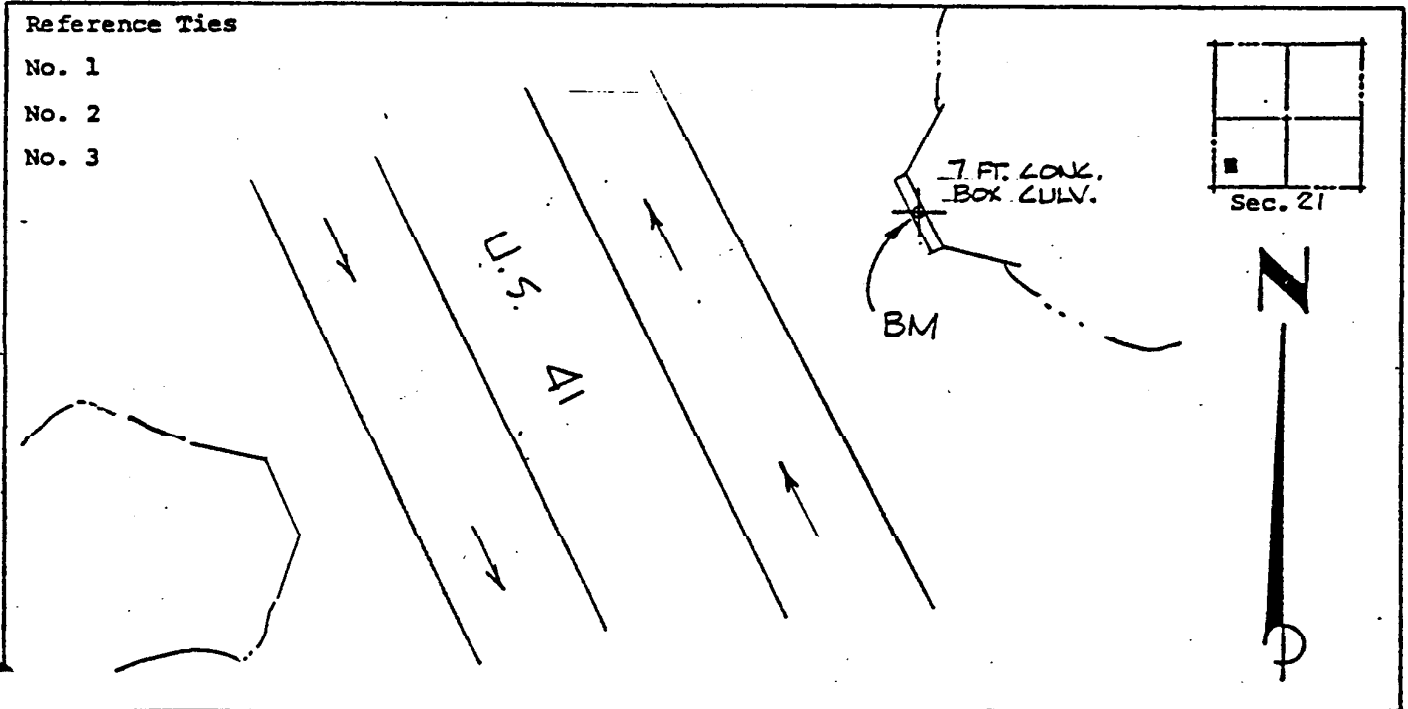
Coordinates: North (y) _____ East (x) _____
(feet)

3rd Order State and Zone Florida, Mercator West

Reference Bearings to Station or Object:

Description	Bearing	Distance

Field Book _____ Page _____ Sketch by D.W. ALBERTSEN



VERTICAL CONTROL originated on 1st order control established by USC 465 agency

in 1966, on National Geodetic Survey Datum of 1929 datum.

Elevation 15.640, ^{year} 1st Order Level Book V1 Page 46
(feet)