



# Deni Associates

7025 N.W. 4th St. - Plantation, Florida 33317

## LEE COUNTY, FLORIDA AERIAL MAPPING PROJECT

MAPPING BY  
HAMRICK AERIAL SURVEYS, INC.  
CLEARWATER, FLORIDA

Marker Designation TBM FMBV-37 County LEE State FL  
Located in Sec. 20 Twp. 46S Rge. 25E U.S.G.S. Quad Map ESTERO 7.5min.

To reach point from US 41 BRIDGE OVER ESTERO RIVER IN ESTERO :  
GO N. 2.7 MI ± TO UNIQUE CIRCLE ; THENCE GO W. 0.5 MI ±  
TO END OF CIRCLE & TBM.

### - IN SHELTERING PINES MOBILE VILLAGE -

Type of Marker 4"x4" CONC. PROP CORNER POST W/PIN Date set JANUARY 19 81

HORIZONTAL CONTROL originated on \_\_\_\_\_ order control established by \_\_\_\_\_

in \_\_\_\_\_, on \_\_\_\_\_ North American 1927 \_\_\_\_\_ datum. \_\_\_\_\_ agency

Coordinates: North (y) \_\_\_\_\_ East (x) \_\_\_\_\_

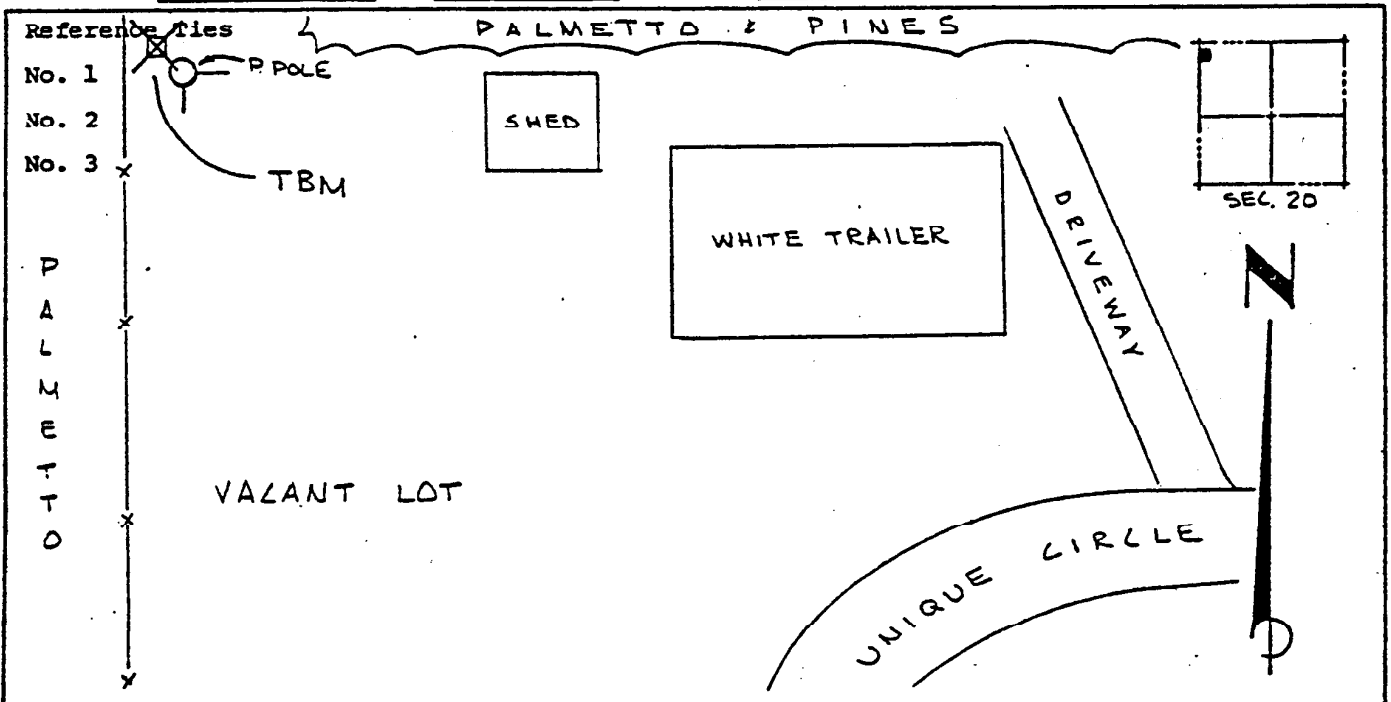
(feet) \_\_\_\_\_

3rd Order State and Zone Florida, Mercator West

Reference Bearings to Station or Object:

Description	Bearing	Distance

Field Book \_\_\_\_\_ Page \_\_\_\_\_ Sketch by A. LETHERY



VERTICAL CONTROL originated on 1st order control established by USC & GS agency

in 1966, on National Geodetic Survey Datum of 1929 datum.

Elevation 07.13, 3rd Order Level Book V1 Page 54  
(feet)