



Deni Associates

7025 N.W. 4th St. • Plantation, Florida 33317

LEE COUNTY, FLORIDA
AERIAL MAPPING PROJECT

MAPPING BY
HAMRICK AERIAL SURVEYS, INC.
CLEARWATER, FLORIDA

Marker Designation TRM FMBV-36 County LEE State FL
Located in Sec. 19 Twp. 46S Rge. 25E U.S.G.S. Quad Map ESTERO 7.5min.

To reach point from US 41 BRIDGE OVER ESTERO RIVER IN ESTERO :
GO N. 0.5 MI ± TO BROADWAY ; THENCE GO W. 1.4 MI ± TO
SUBSTATION & TRAIL TO N. ALONG POWERLINE ; THENCE N. 0.6 MI ±
TO TRM

Type of Marker 8" SPK. IN W. FACE OF W. MOST P. POLE Date set JANUARY 19 81

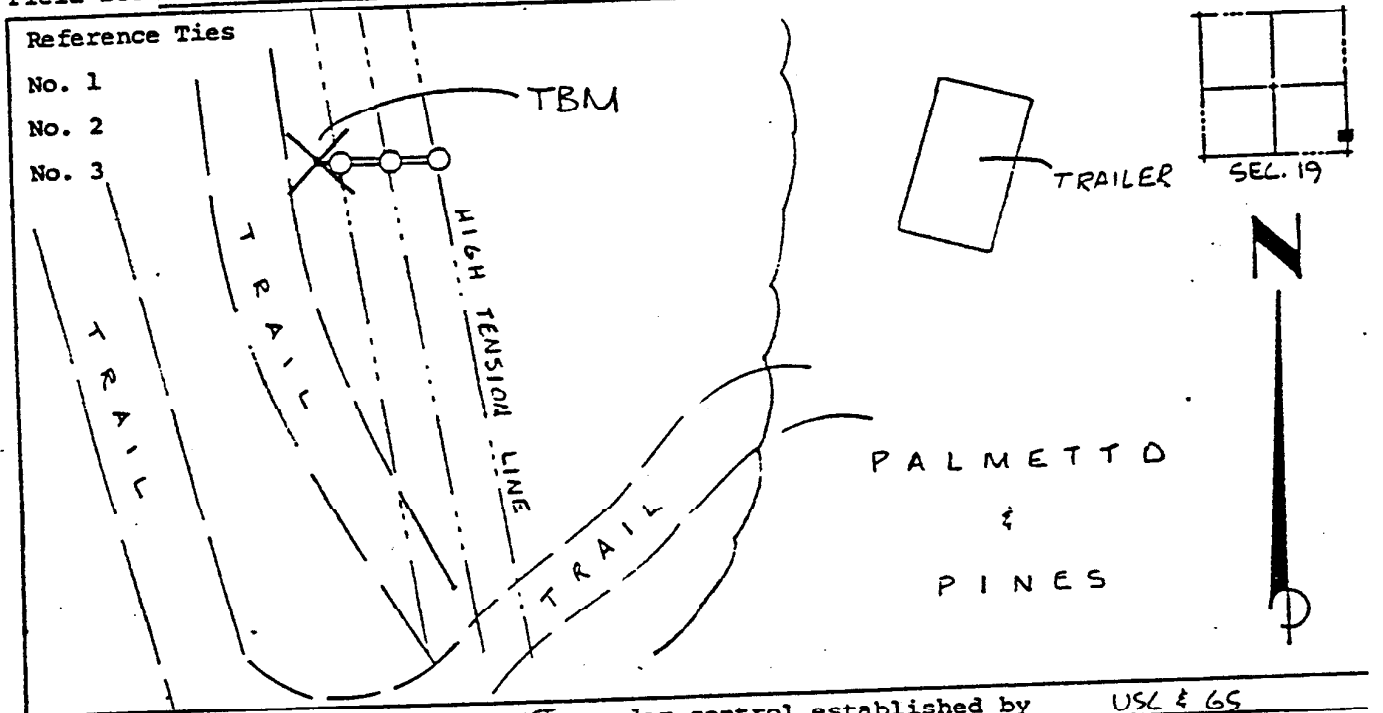
HORIZONTAL CONTROL originated on _____ order control established by _____ agency
in _____, on _____ North American 1927 _____ datum.

Coordinates: North (y) _____ East (x) _____
(feet) _____ State and Zone Florida, Mercator West
3rd Order

Reference Bearings to Station or Object:

Description	Bearing	Distance

Field Book _____ Page _____ Sketch by A. LETHEBY



VERTICAL CONTROL originated on 1st order control established by USC & GS agency
in 1966, on National Geodetic Survey Datum of 1929 datum.

year 1966, on National Geodetic Survey Datum of 1929 datum.
Elevation 09.40, 3rd Order Level Book VI Page 70
(feet)