



7025 N.W. 4th St. - Plantation, Florida 33317

U.S.D.A. SOIL CONSERVATION SERVICE

MAPPING BY

HAMRICK AERIAL SURVEYS, INC.
CLEARWATER, FLORIDA

Marker Designation TBM SV-28 County LEE State FL

Located in Sec. 25 Twp. 43 S. Rge. 24 E. U.S.G.S. Quad Map FORT MYERS 7.5 mi

To reach point from INT. OF US 41 & RTE. 78 IN N. FT. MYERS. GO E. ON RTE. 78
2.2 MI.± TO HART RD. THEN N. ON HART RD. 1.3 MI.± TO LAUREL LN. NE. THEN E.
0.3 MI.± TO BARTHOLOMEW RD. NE. THEN N. 0.2 MI.± TO ANGLE POINT IN POWER LINE
ON EAST SIDE OF RD. & MARKER.

Type of Marker CHISELED + SET VERT. IN W. FACE OF CONC. POLE Date set NOV. - DEC. 19 80

HORIZONTAL CONTROL originated on _____ order control established by _____

in _____, on _____ North American 1927 _____ datum. _____ agency

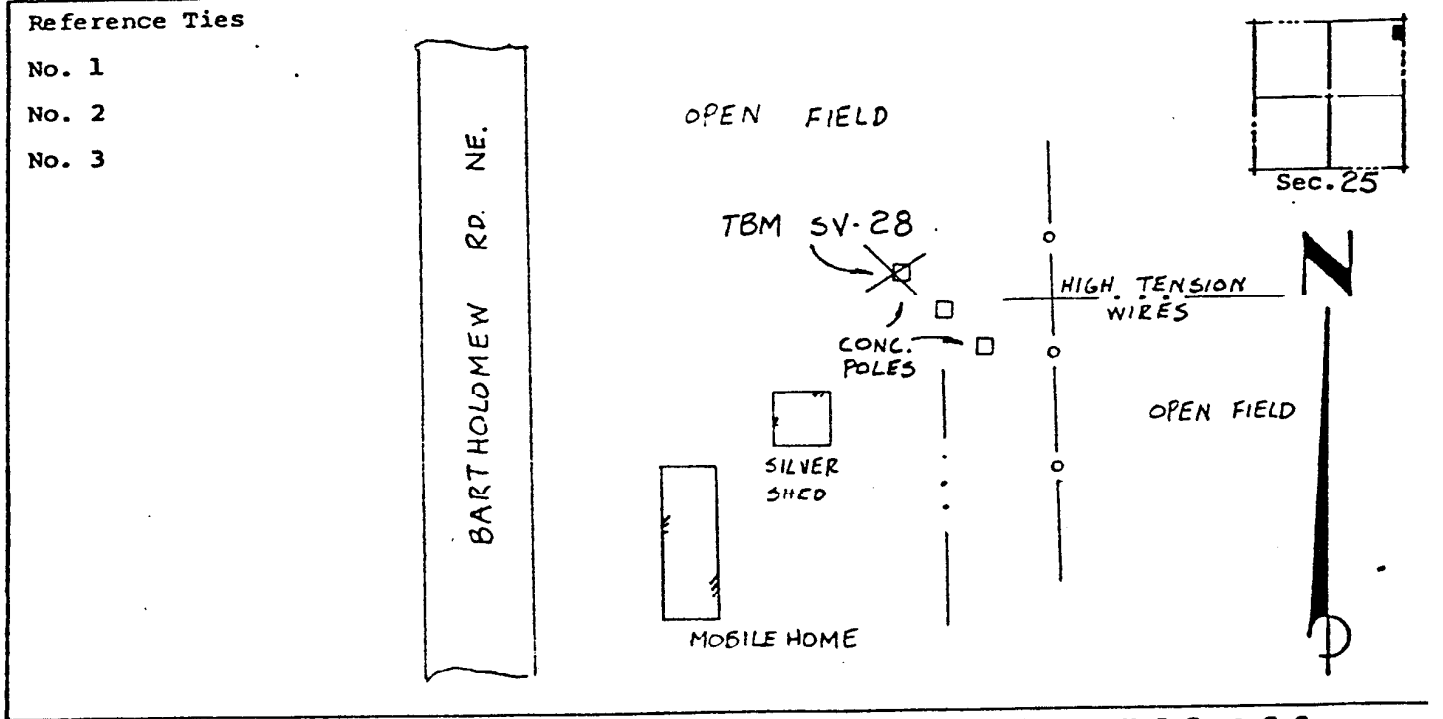
Coordinates: North (y) _____ East (x) _____

(feet) _____ 3rd Order State and Zone Florida, Mercator West

Reference Bearings to Station or Object:

Description	Bearing	Distance

Field Book 1 Page _____ Sketch by B.R. HOMOLA



VERTICAL CONTROL originated on 1 st order control established by U.S.C. & G.S.

in 1966, on National Geodetic Survey Datum of 1929 datum. _____ agency

Elevation 15.86, _____ 3rd Order Level Book 2 Page 13