

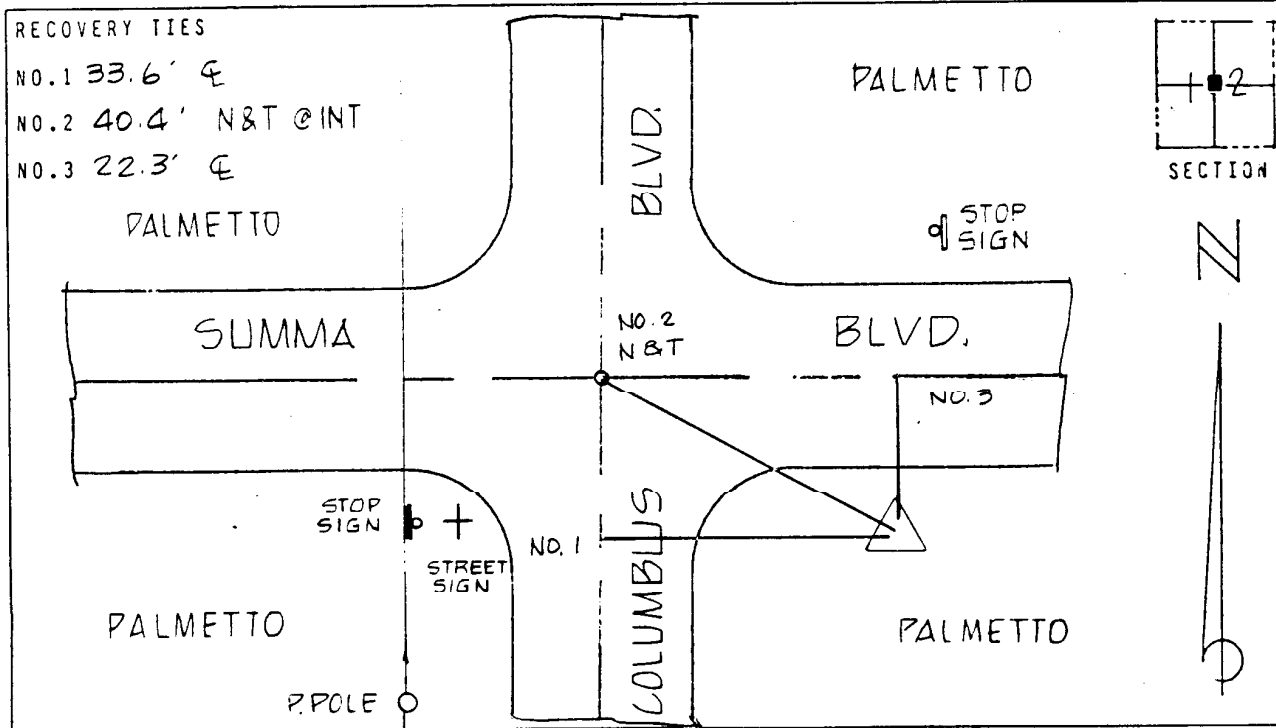


LEE COUNTY, FLORIDA
 AERIAL MAPPING PROJECT
 MAPPING BY:
 WOOLPERT CONSULTANTS

DESIGNATION LH28 & TBM COUNTY LEE STATE FL
 LOCATED IN SEC 12 TWP 45 S. RGE 27 E. USGS QUAD MAP ALVA S.E.
 TO REACH SURVEY MARK FROM _____
AT INTERSECTION AS SHOWN, IN LEHIGH ACRES,

TYPE OF 2" ALUM CAP ON REBAR
 MARK 3" BELOW GRD DATE SET AUGUST 1988
 HORIZONTAL CONTROL ORIGINATED ON 2ND ORDER CONTROL BY N.G.S. AND F.D.O.T.
 ON NORTH AMERICAN DATUM OF 1927 (1927 ADJ) ON NORTH AMERICAN DATUM OF 1983
 COORDINATES (FT) COORDINATES (FT)
 NORTHING (Y) 816,351.160 NORTHING (Y) _____
 EASTING (X) 639,557,339 EASTING (X) _____
3RD ORDER COORDINATES STATE AND ZONE FLORIDA, MERCATOR WEST

FIELD BOOK HB PAGE 36 SKETCH BY BKC



VERTICAL CONTROL ORIGINATED ON 2ND ORDER CONTROL ESTABLISHED BY N.G.S. AND F.D.O.T.
 ON NATIONAL GEODETIC VERTICAL DATUM OF 1929

ELEVATION (FT) 28.67 3RD ORDER LEVEL BOOK V 20 PAGE 16