



Deni Associates
FORT MYERS, FLORIDA

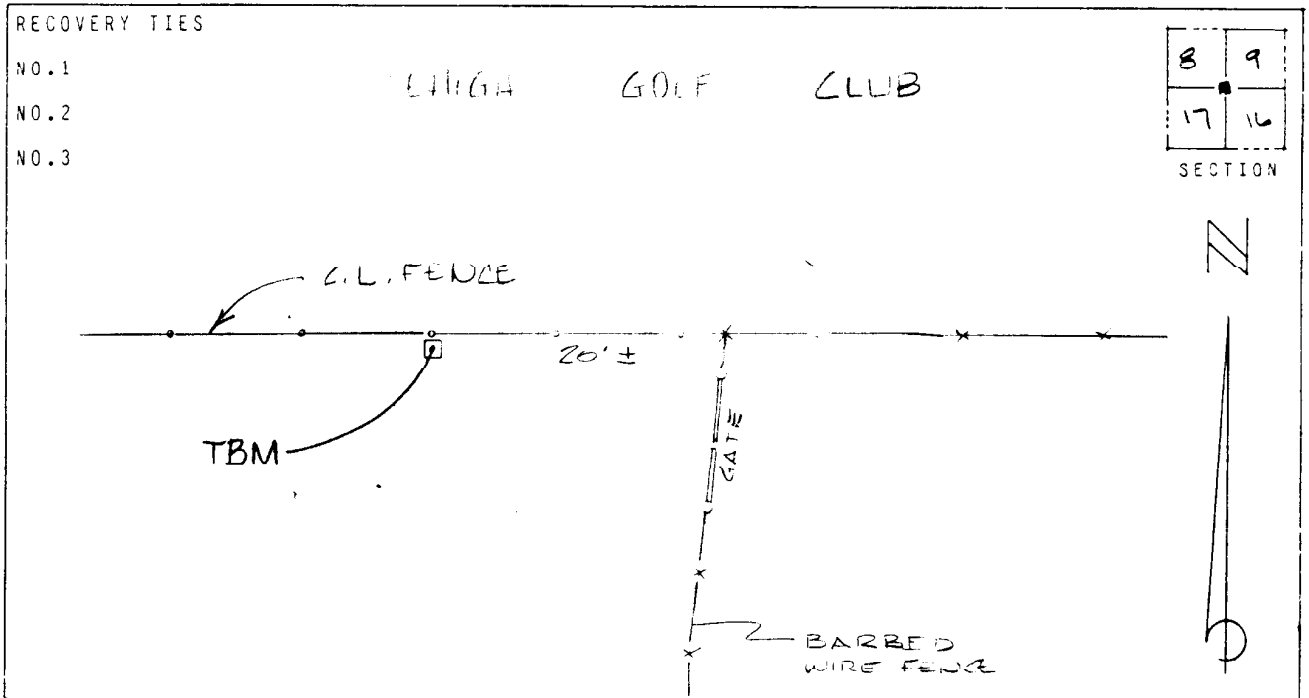
LEE COUNTY, FLORIDA
AERIAL MAPPING PROJECT

MAPPING BY:
WOOLPERT CONSULTANTS

DESIGNATION TBM 20-9 COUNTY LEE STATE FL
LOCATED IN SEC 8/9 TWP 17/16 RGE 45 S RGE 27 E USGS QUAD MAP ALVA SIX
TO REACH SURVEY MARK FROM SE CORNER OF GOLF COURSE & HOMESTEAD ROAD; FOLLOW FENCELINE WESTERLY FOR 0.75 MILES AND MARK 20' WEST OF T FENCE INT.

TYPE OF STEEL RE-BAR IN CTR OF 6" X 6" CONC MON, PROJ.
MARK 1.5 ABV GRD. DATE SET DEC. 19 88
HORIZONTAL CONTROL ORIGINATED ON 2ND ORDER CONTROL BY N.G.S. AND F.D.O.T.
ON NORTH AMERICAN DATUM OF 1927 (1927 ADJ) ON NORTH AMERICAN DATUM OF 1983
COORDINATES (FT) COORDINATES (FT)
NORTHING (Y) _____ NORTHING (Y) _____
EASTING (X) _____ EASTING (X) _____
3RD ORDER COORDINATES STATE AND ZONE FLORIDA, MERCATOR WEST

FIELD BOOK _____ PAGE _____ SKETCH BY DSW



VERTICAL CONTROL ORIGINATED ON 2ND ORDER CONTROL ESTABLISHED BY N.G.S. AND F.D.O.T.
ON NATIONAL GEODETIC VERTICAL DATUM OF 1929
ELEVATION (FT) 32.53 , 3RD ORDER LEVEL BOOK V 20 PAGE 9