



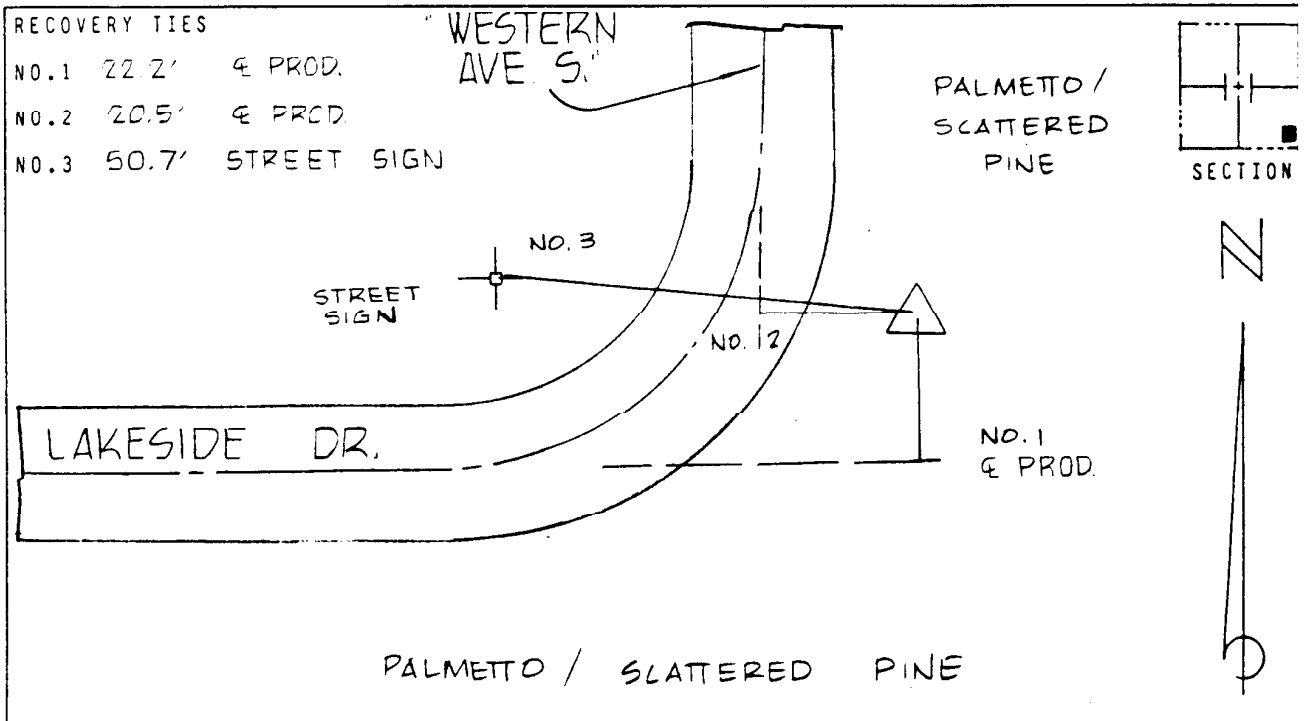
Deni Associates
FORT MYERS, FLORIDA

LEE COUNTY, FLORIDA
AERIAL MAPPING PROJEC
MAPPING BY:
WOOLPERT CONSULTANTS

DESIGNATION LH 26 & TBM COUNTY LEE STATE FL
LOCATED IN SEC 11 TWP 45 S RGE 27 E USGS QUAD MAP ALVA SE
TO REACH SURVEY MARK FROM INT OF BELL BLVD & LAKESIDE DR. IN
LEHIGH ACRES : GO E. 1.5 MILES ± TO WESTERN AV S.
AND MARK. ON E. SIDE OF ROAD.

TYPE OF 2" ALUM CAP ON REBAR
MARK 6" BELOW GRD DATE SET JULY 19 88
HORIZONTAL CONTROL ORIGINATED ON 2ND ORDER CONTROL BY N.G.S. AND F.D.O.T.
ON NORTH AMERICAN DATUM OF 1927 (1927 ADJ) ON NORTH AMERICAN DATUM OF 1983
COORDINATES (FT) COORDINATES (FT)
NORTHING (Y) 813.462.336 NORTHING (Y) _____
EASTING (X) 636.884.933 EASTING (X) _____
3RD ORDER COORDINATES STATE AND ZONE FLORIDA, MERCATOR WEST

FIELD BOOK 48 PAGE 30 SKETCH BY BKC



VERTICAL CONTROL ORIGINATED ON 2ND ORDER CONTROL ESTABLISHED BY N.G.S. AND F.D.O.T.
ON NATIONAL GEODETIC VERTICAL DATUM OF 1929
ELEVATION (FT) 29.63 , 3RD ORDER LEVEL BOOK V 20 PAGE 12