



LEE COUNTY, FLORIDA
AERIAL MAPPING PROJECT

MAPPING BY:
WOOLPERT CONSULTANTS

DESIGNATION LH29 & TBU COUNTY LEE STATE FL
LOCATED IN SEC 12 TWP 45 S. RGE 27 E. USGS QUAD MAP ALVA S.E.
TO REACH SURVEY MARK FROM _____
AT INTERSECTION AS SHOWN, IN LEHIGH ACRES.

TYPE OF P.C.P. N & T

MARK _____ DATE SET AUGUST 19 88

HORIZONTAL CONTROL ORIGINATED ON 2ND ORDER CONTROL BY N.G.S. AND F.D.O.T.

ON NORTH AMERICAN DATUM OF 1927 (1927 ADJ) ON NORTH AMERICAN DATUM OF 1983

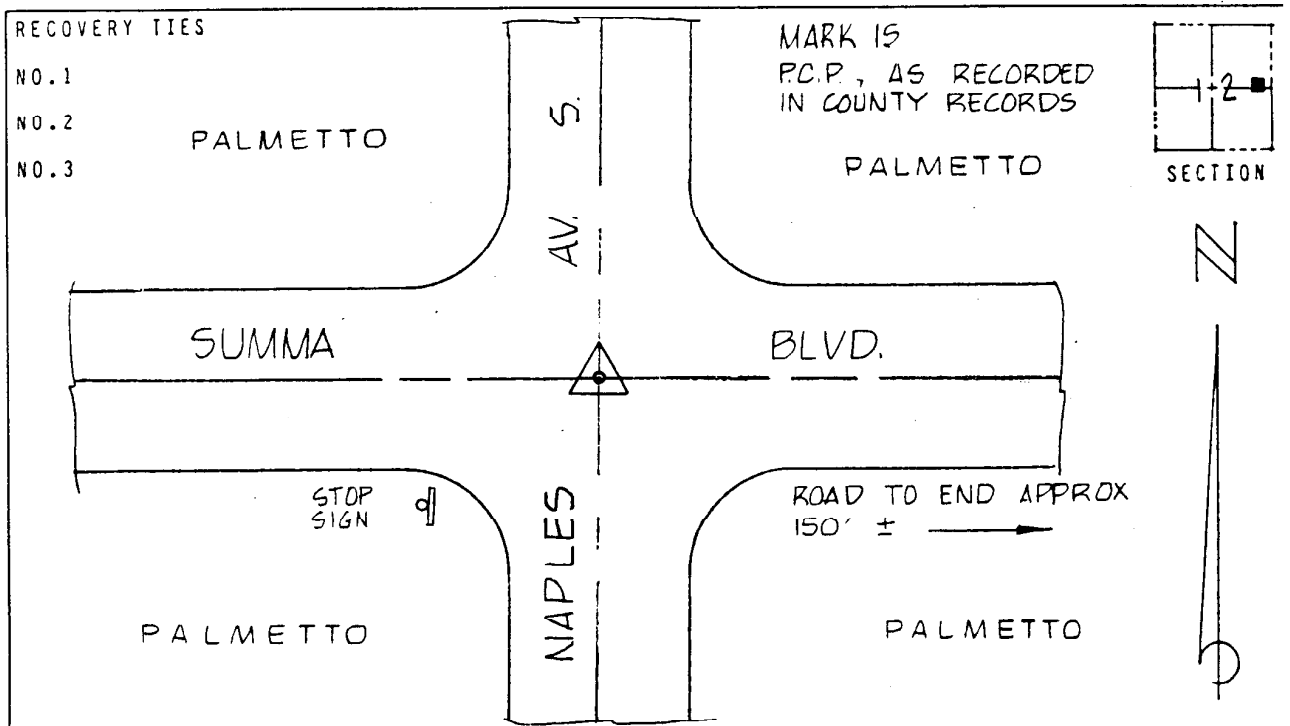
COORDINATES (FT) COORDINATES (FT)

NORTHING (Y) 316,411.914 NORTHING (Y) _____

EASTING (X) 641,709.736 EASTING (X) _____

3RD ORDER COORDINATES STATE AND ZONE FLORIDA, MERCATOR WEST

FIELD BOOK H8 PAGE 37 SKETCH BY BKC



VERTICAL CONTROL ORIGINATED ON 2ND ORDER CONTROL ESTABLISHED BY N.G.S. AND F.D.O.T.

ON NATIONAL GEODETIC VERTICAL DATUM OF 1929

ELEVATION (FT) 28.94 , 3RD ORDER LEVEL BOOK V 20 PAGE 13