



Deni Associates
FORT MYERS, FLORIDA

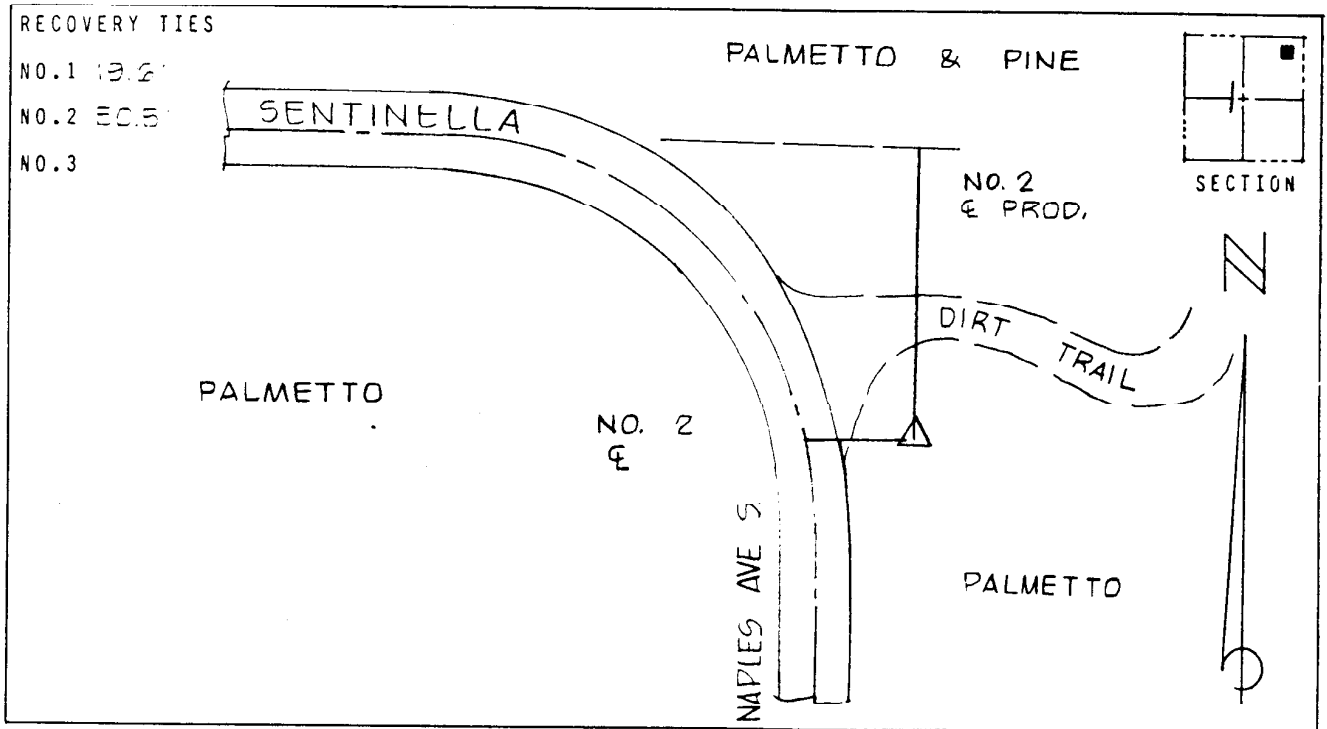
LEE COUNTY, FLORIDA
AERIAL MAPPING PROJECT

MAPPING BY:
WOOLPERT CONSULTANTS

DESIGNATION LH 31 & TBM COUNTY LEE STATE FL
 LOCATED IN SEC 1 TWP 45 S RGE 27 E USGS QUAD MAP ALVA S.E.
 TO REACH SURVEY MARK FROM INT. OF SUMMA BLVD. & NAPLES AV S. IN LEHIGH
ACRES: GO N. 1.35 MILES ± TO MARK, ON E. SIDE OF ROAD

TYPE OF 2" ALUM CAP ON REBAR
 MARK 3" BELOW GRD. DATE SET JULY 1988
 HORIZONTAL CONTROL ORIGINATED ON 2ND ORDER CONTROL BY N.G.S. AND F.D.O.T.
 ON NORTH AMERICAN DATUM OF 1927 (1927 ADJ) ON NORTH AMERICAN DATUM OF 1983
 COORDINATES (FT) COORDINATES (FT)
 NORTHING (Y) 823,313.298 NORTHING (Y) _____
 EASTING (X) 641,622.641 EASTING (X) _____
3RD ORDER COORDINATES STATE AND ZONE FLORIDA, MERCATOR WEST

FIELD BOOK H 8 PAGE 39 SKETCH BY BKC



VERTICAL CONTROL ORIGINATED ON 2ND ORDER CONTROL ESTABLISHED BY N.G.S. AND F.D.O.T.
 ON NATIONAL GEODETIC VERTICAL DATUM OF 1929
 ELEVATION (FT) 25.85, 3RD ORDER LEVEL BOOK V 20 PAGE 14