



Deni Associates  
FORT MYERS, FLORIDA

LEE COUNTY, FLORIDA  
AERIAL MAPPING PROJECT  
MAPPING BY:  
WOOLPERT CONSULTANTS

DESIGNATION LH30 & T3U COUNTY LEE STATE FL  
LOCATED IN SEC 1 TWP 45 S RGE 27 E USGS QUAD MAP ALVA SE.  
TO REACH SURVEY MARK FROM INT OF SUMMA BLVD & NAPLES AVE. S. :  
GO N. 0.9 MILE ± TO MARK @ 4 INT AS SHOWN  
IN LEHIGH ACRES

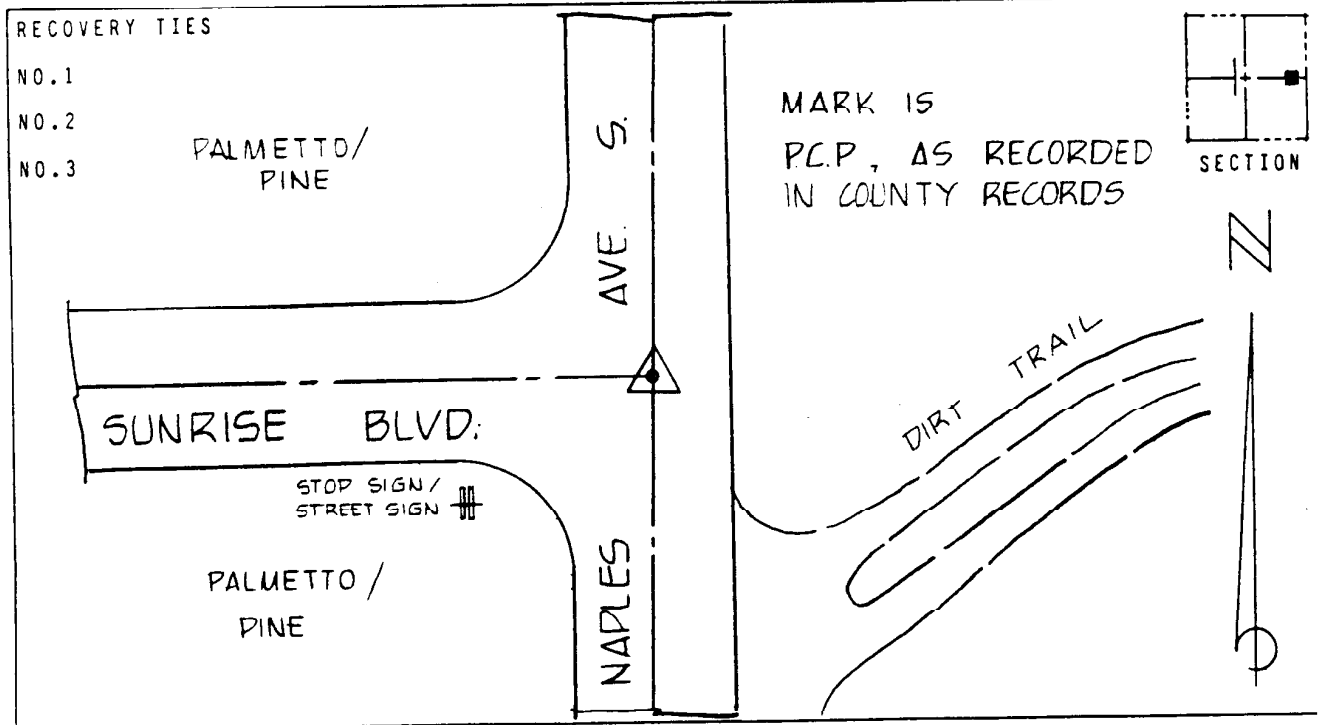
TYPE OF N&T P.C.P  
MARK \_\_\_\_\_ DATE SET JULY 19 88

HORIZONTAL CONTROL ORIGINATED ON 2ND ORDER CONTROL BY N.G.S. AND F.D.O.T.  
ON NORTH AMERICAN DATUM OF 1927 (1927 ADJ) ON NORTH AMERICAN DATUM OF 1983

COORDINATES (FT) COORDINATES (FT)  
NORTHING (Y) 821,044.201 NORTHING (Y) \_\_\_\_\_  
EASTING (X) 621,635.317 EASTING (X) \_\_\_\_\_

3RD ORDER COORDINATES STATE AND ZONE FLORIDA, MERCATOR WEST

FIELD BOOK H B PAGE 38 SKETCH BY BKC



VERTICAL CONTROL ORIGINATED ON 2ND ORDER CONTROL ESTABLISHED BY N.G.S. AND F.D.O.T.  
ON NATIONAL GEODETIC VERTICAL DATUM OF 1929

ELEVATION (FT) 27.45, 3RD ORDER LEVEL BOOK V 20 PAGE 1d