



Deni Associates

7025 N.W. 4th St. - Plantation, Florida 33317

LEE COUNTY, FLORIDA
AERIAL MAPPING PROJECT

MAPPING BY
HAMRICK AERIAL SURVEYS, INC.
CLEARWATER, FLORIDA

Marker Designation TBM SMCV-22 County LEE State FL

Located in Sec. 30 Twp. 45S Rge. 25 E. U.S.G.S. Quad Map FORT MYERS SE 7.5min.

To reach point from INT. U.S. RT. 41 & DANIELS RD. : GO EAST 1.5 MI ± TO
POWERLINE ; THENCE GO 1.0 MI ± SOUTH ALONG POWERLINE
TO TBM

Type of Marker 8" SPK. IN W. FACE OF W. MOST P. POLE Date set JUNE 19 80

HORIZONTAL CONTROL originated on 2nd order control established by FLA. D.O.T.

in 1972, on North American 1927 datum.

Coordinates: North (y) _____ East (x) _____

(feet)

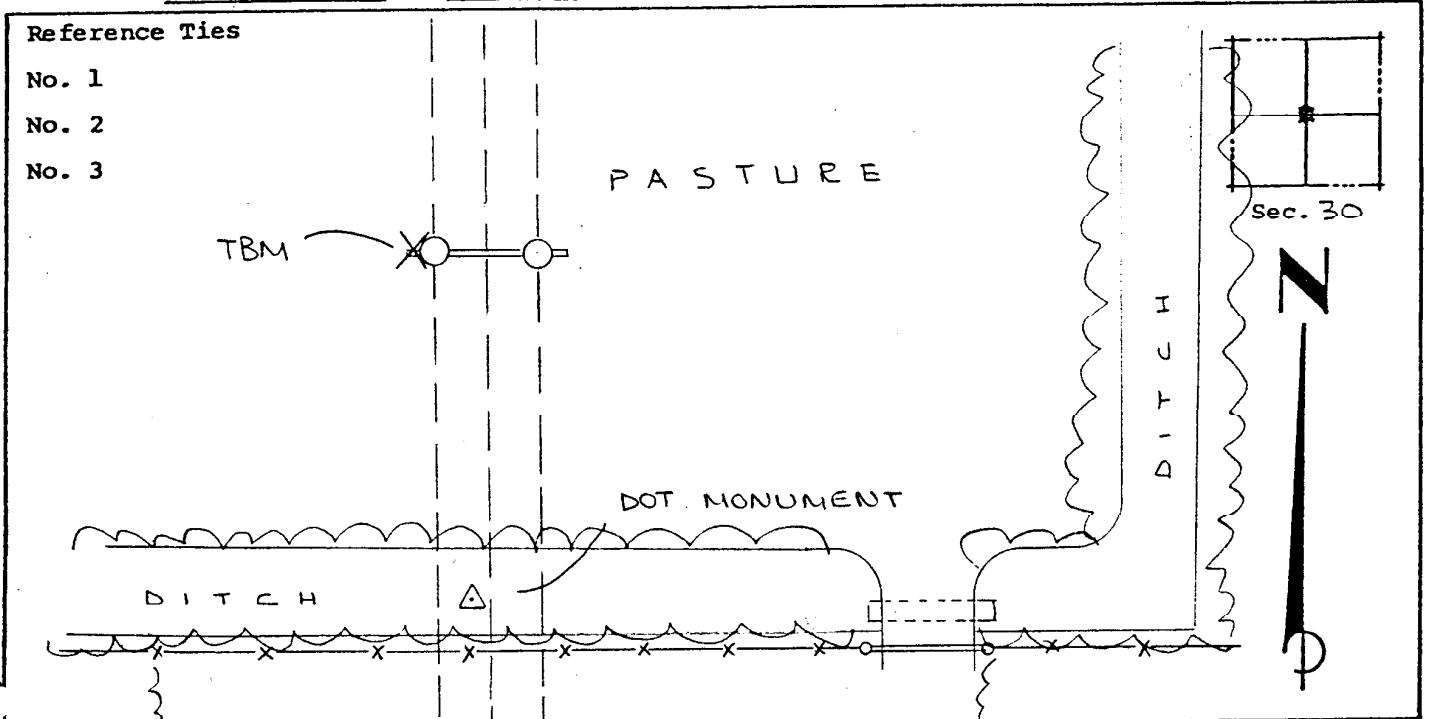
3rd Order

State and Zone Florida, Mercator West

Reference Bearings to Station or Object:

Description	Bearing	Distance

Field Book _____ Page _____ Sketch by A. LETHBY



VERTICAL CONTROL originated on 1ST order control established by USC & GS agency

in 1965, on National Geodetic Survey Datum of 1929 datum.

year _____

Elevation 14.57, 3rd Order Level Book V2 Page 5

(feet)