



Deni Associates

7025 N.W. 4th St. • Plantation, Florida 33317

LEE COUNTY, FLORIDA
AERIAL MAPPING PROJECT

MAPPING BY
HAMRICK AERIAL SURVEYS, INC.
CLEARWATER, FLORIDA

Marker Designation TBM SMCV-24 County LEE State FL
Located in Sec. 31 Twp. 45S Rge. 25E U.S.G.S. Quad Map FORT MYERS S.E. 7.5min.

To reach point from N.W. COR. SEC 36-45-24 & US 41 (S.E.): GO S.E.
0.7 MI ± TO BRIARCLIFF RD; THENCE GO E 1.25 MI ± TO TBM

Type of Marker EX R.R. SPK. IN S. FACE OF P. POLE Date set AUGUST 19 80

HORIZONTAL CONTROL originated on 2nd order control established by FLA. D. O. T.

in year, on North American 1927 datum. agency

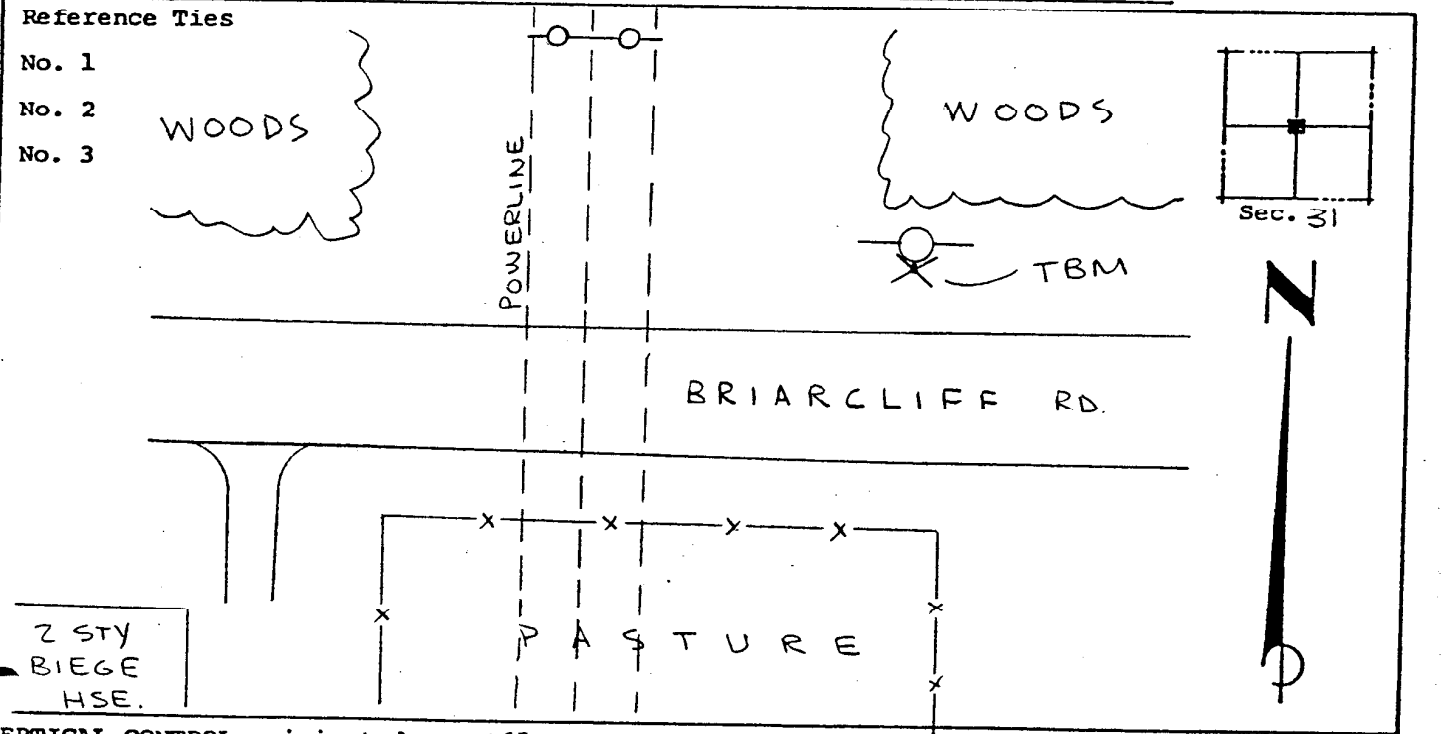
Coordinates: North (y) _____ East (x) _____
(feet)

3rd Order State and Zone Florida, Mercator West

Reference Bearings to Station or Object:

Description	Bearing	Distance

Field Book _____ Page _____ Sketch by A LETHBY



VERTICAL CONTROL originated on 1st order control established by USC & GS

in 1965, on National Geodetic Survey Datum of 1929 datum. agency

year _____
Elevation 11.68, 3rd Order Level Book V2 Page 7
(feet)