



Deni Associates

7025 N.W. 4th St. - Plantation, Florida 33317

LEE COUNTY, FLORIDA AERIAL MAPPING PROJECT

MAPPING BY
HAMRICK AERIAL SURVEYS, INC.
CLEARWATER, FLORIDA

Marker Designation TBM SMCV-18 County LEE State FL

Located in Sec. 20 Twp. 45S Rge. 25 E. U.S.G.S. Quad Map PORT MYERS SE 7.5min

To reach point from INT US RT 41 & DANIELS RD. : GO EAST 2.5 MI ±
TO TBM

Type of Marker EX. 60d SPK IN NW FACE OF FENCE CORNER Date set JUNE 19 80

HORIZONTAL CONTROL originated on 2nd order control established by FLA. D.O.T. agency

in 1972, on North American 1927 datum.

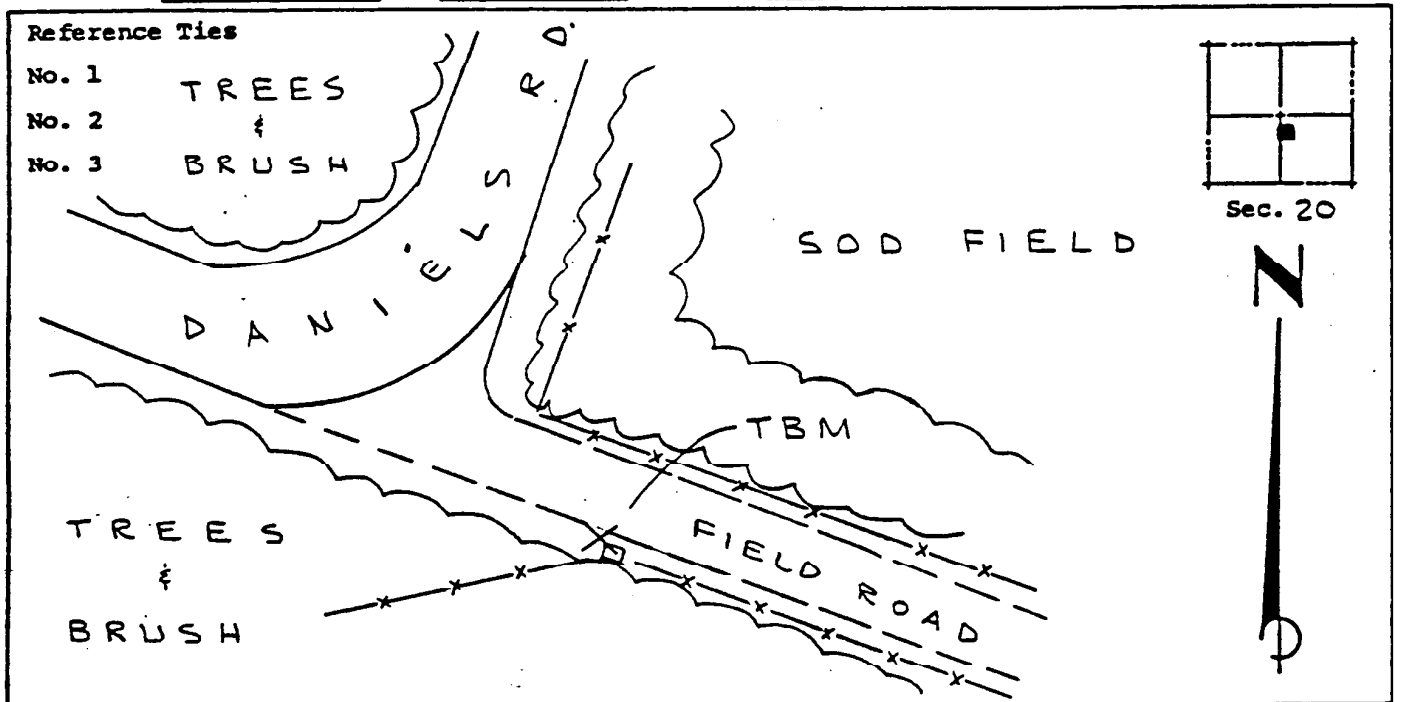
Coordinates: North (y) _____ East (x) _____
(feet)

3rd Order State and Zone Florida, Mercator West

Reference Bearings to Station or Object:

Description	Bearing	Distance

Field Book _____ Page _____ Sketch by A LETHERY



VERTICAL CONTROL originated on 1ST order control established by USC & GS agency

in 1965, on National Geodetic Survey Datum of 1929 datum.

Elevation 17.88, 3rd Order Level Book V2 Page 10
(feet)