



**Deni Associates**  
 RT. 3, 11555 MARSHWOOD LN. S.W.  
 FORT MYERS, FL 33908

LEE COUNTY, FLORIDA  
 AERIAL MAPPING PROJECT

MAPPING BY  
 HAMRICK AERIAL SURVEYS, INC.  
 CLEARWATER, FLORIDA

DESIGNATION TBM SFMY-45 COUNTY LEE STATE FL

LOCATED IN SEC 27|26 TWP 45-S RGE 25-E USGS QUAD MAP FT MYERS SE.

TO REACH SURVEY MARK FROM  
AT SEC. COR. 27|26 T.455.  
34|35

TYPE OF MARK EXIST. JOHNSON ENG. CONC. MON DATE SET APRIL 1982

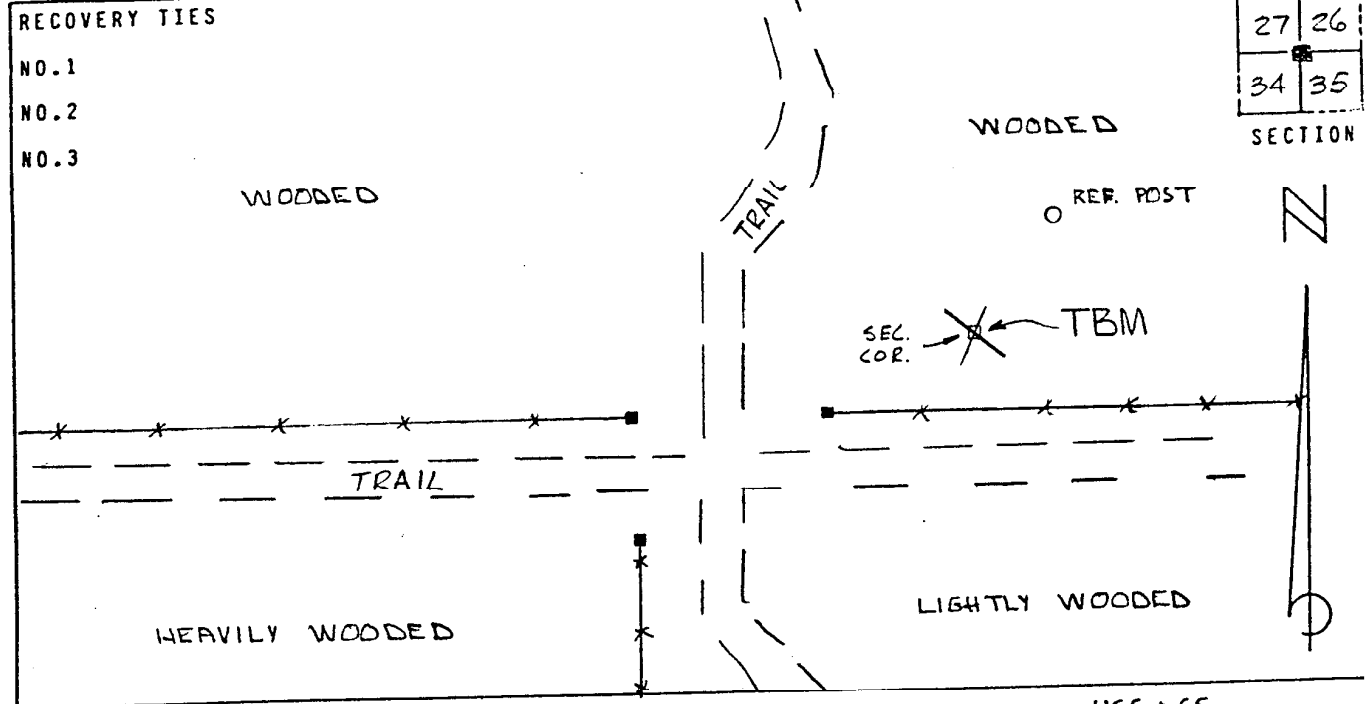
HORIZONTAL CONTROL ORIGINATED ON \_\_\_\_\_ ORDER CONTROL ESTABLISHED BY \_\_\_\_\_  
 IN \_\_\_\_\_, ON \_\_\_\_\_.

COORDINATES (FT) NORTH (Y) \_\_\_\_\_ EAST (X) \_\_\_\_\_  
 \_\_\_\_\_ ORDER STATE AND ZONE \_\_\_\_\_

REFERENCE BEARINGS TO STATION OR OBJECT

DESCRIPTION	BEARING	DISTANCE

FIELD BOOK \_\_\_\_\_ PAGE \_\_\_\_\_ SKETCH BY ALE



VERTICAL CONTROL ORIGINATED ON 1ST. ORDER CONTROL ESTABLISHED BY USC & GS

IN 1966, ON NATIONAL GEODETIC VERTICAL DATUM 1929.

ELEVATION (FT) 21.53, 3RD. ORDER LEVEL BOOK V 7 PAGE 63