



Deni Associates
7025 N.W. 4th St. • Plantation, Florida 33317

**LEE COUNTY, FLORIDA
AERIAL MAPPING PROJECT**

MAPPING BY
HAMRICK AERIAL SURVEYS, INC.
CLEARWATER, FLORIDA

Marker Designation TBM SMCV-19 County LEE State FL
Located in Sec. 19 Twp. 45S Rge. 25 E. U.S.G.S. Quad Map FORT MYERS SE 7.5min.
To reach point from _____

AT INT DANIELS RD & POWERLINE 1.5 MI. ± EAST OF
U.S. RT. 41

Type of Marker 8" SPK IN E. FACE OF FENCE CORNER Date set JUNE 19 80

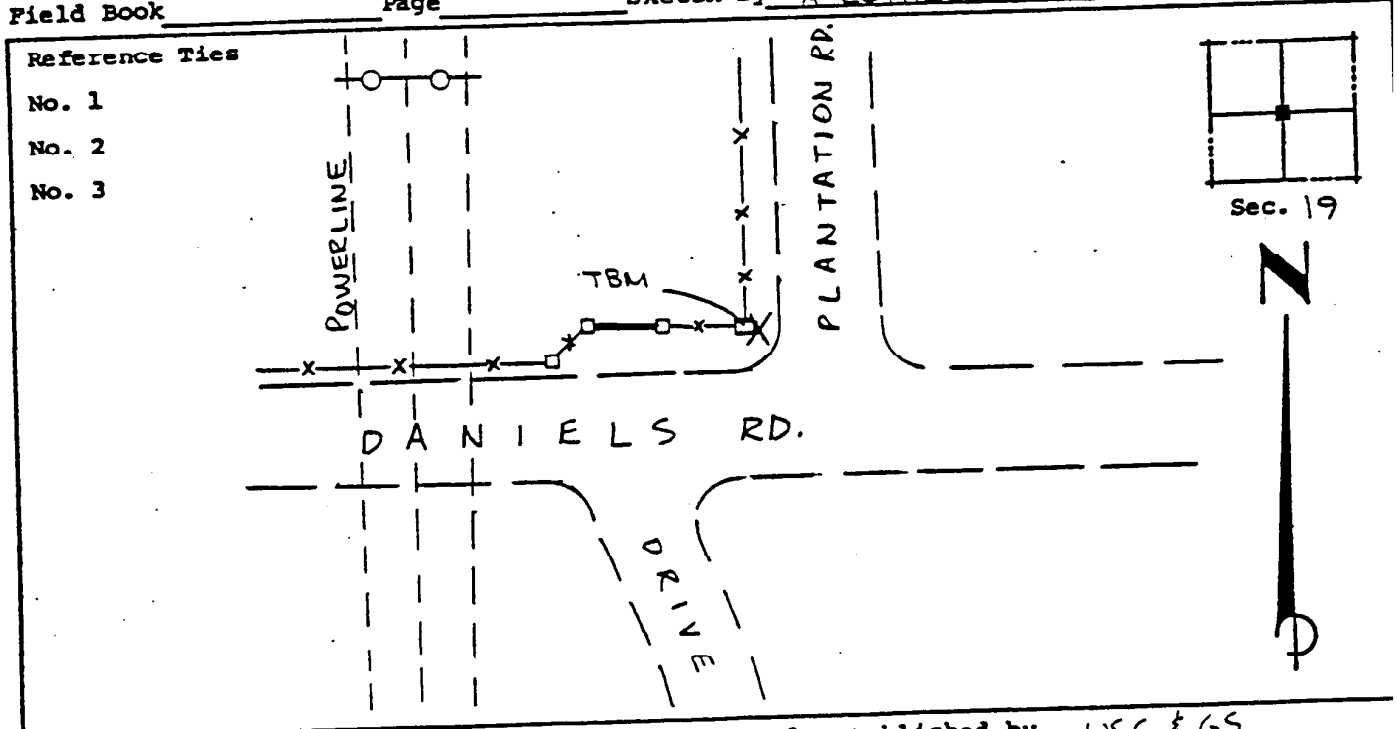
HORIZONTAL CONTROL originated on 2nd order control established by FLA. D.O.T. agency
in 1972, on North American 1927 datum.
year
Coordinates: North (y) _____ East (x) _____
(feet)

3rd Order State and Zone Florida, Mercator West

Reference Bearings to Station or Object:

Description	Bearing	Distance

Field Book _____ Page _____ Sketch by A. LETHERY



VERTICAL CONTROL originated on 1ST order control established by USC & GS agency
in 1965, on National Geodetic Survey Datum of 1929 datum.
year
Elevation 16.61, 3rd Order Level Book V2 Page 5