



**Deni Associates**

7025 N.W. 4th St. • Plantation, Florida 33317

LEE COUNTY, FLORIDA  
AERIAL MAPPING PROJECT

MAPPING BY  
HAMRICK AERIAL SURVEYS, INC.  
CLEARWATER, FLORIDA

Marker Designation TBM SMCV-13 County LEE State FL  
Located in Sec. 16 Twp. 49S Rge. 29E U.S.G.S. Quad Map FT. MYERS S.E. 7.5mir

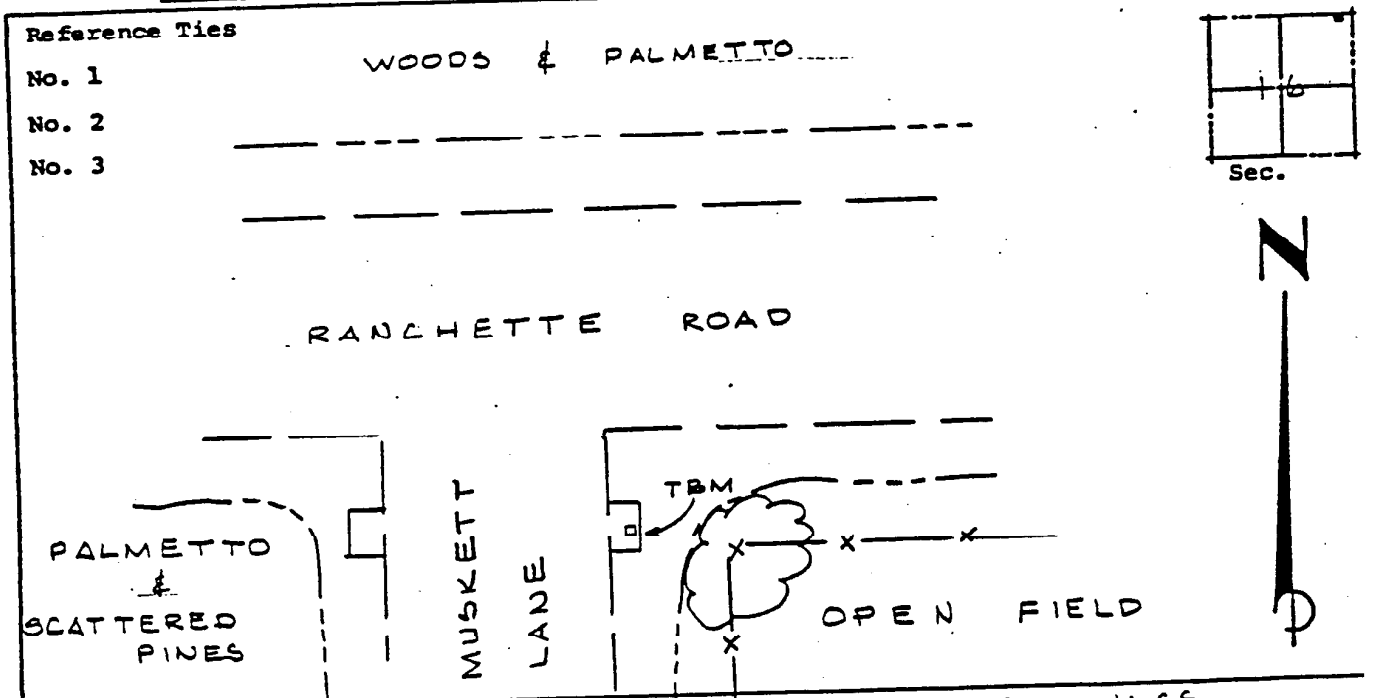
To reach point from \_\_\_\_\_  
AT INT. OF RANCHETTE RD. & MUSKETT LN. 0.1 MI W  
FROM N.E. CORNER OF SEC. 16

Type of Marker CHISELED 'D' IN CONC. CULV. PIPE Date set AGUST 19 80  
HORIZONTAL CONTROL originated on 2nd order control established by FLA. D. O. T. agency  
in \_\_\_\_\_, on \_\_\_\_\_ North American 1927 datum.  
Coordinates: North (y) \_\_\_\_\_ East (x) \_\_\_\_\_  
(feet) 3rd Order State and Zone Florida, Mercator West

Reference Bearings to Station or Object:

Description	Bearing	Distance

Field Book \_\_\_\_\_ Page \_\_\_\_\_ Sketch by M.M. HOMOLA



VERTICAL CONTROL originated on 3RD order control established by USGS agency  
in 1971 year, on National Geodetic Survey Datum of 1929 datum.  
Elevation 18.76 (feet), 3rd Order Level Book V3 Page 5