



Deni Associates

RT. 3, 11555 MARSHWOOD LN. S.W.
FORT MYERS, FL 33908

LEE COUNTY, FLORIDA
AERIAL MAPPING PROJECT

MAPPING BY
HAMRICK AERIAL SURVEYS, INC.
CLEARWATER, FLORIDA

DESIGNATION TBM SFMV-7 COUNTY LEE STATE FL

LOCATED IN SEC 20 TWP 45S RGE 24E USGS QUAD MAP FORT MYERS SW.

TO REACH SURVEY MARK FROM INT. OF MCGREGOR BLVD. & GLADIOLUS DR. IN SW. FORT MYERS: GO NE. ON MCGREGOR BLVD. 1.0 MI. ± TO GRIFFIN BLVD. SW.; THENCE N. 0.9 MI. ± TO MARK.

TYPE OF MARK CHISELED "4" ON N. FLANGE BOLT OF FIRE HYD. DATE SET DEC. 19 81

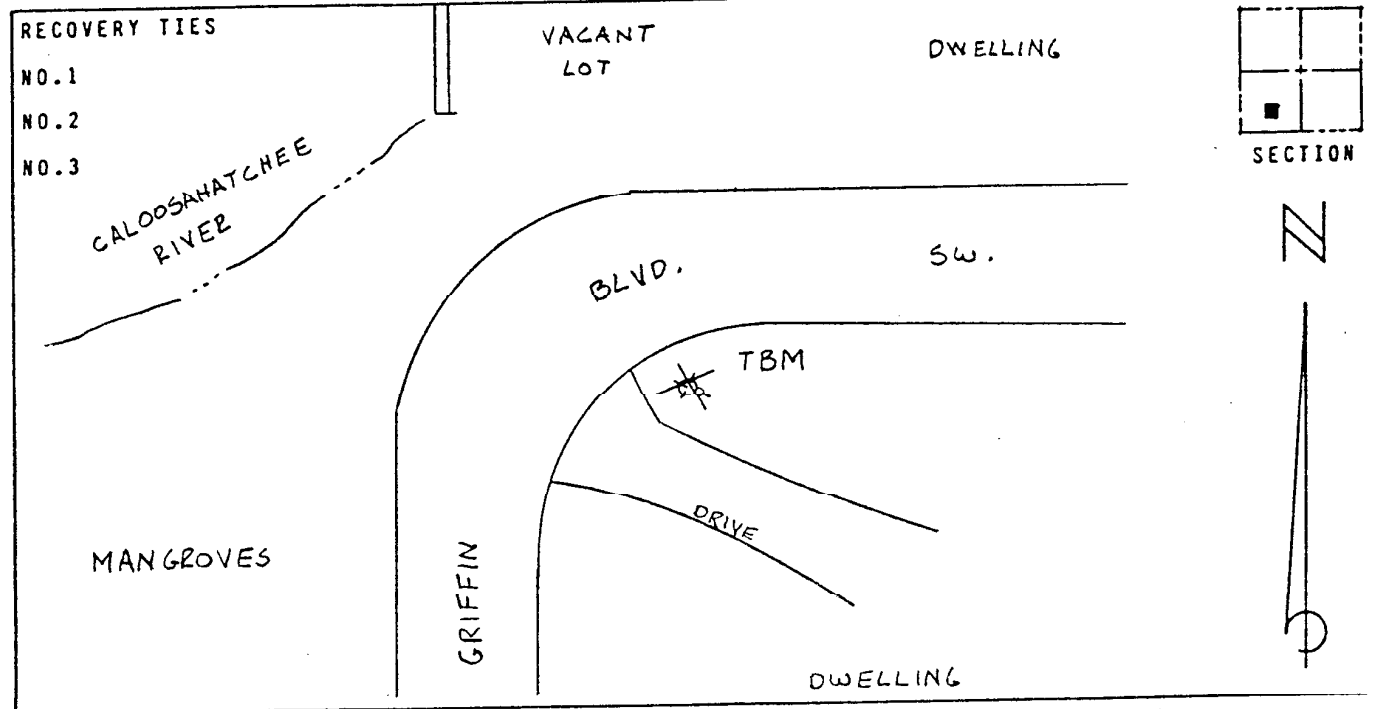
HORIZONTAL CONTROL ORIGINATED ON _____ ORDER CONTROL ESTABLISHED BY _____
IN _____, ON _____.

COORDINATES (FT) NORTH (Y) _____ EAST (X) _____
_____ ORDER STATE AND ZONE _____

REFERENCE BEARINGS TO STATION OR OBJECT

DESCRIPTION	BEARING	DISTANCE

FIELD BOOK _____ PAGE _____ SKETCH BY B.R. HOMOLA



VERTICAL CONTROL ORIGINATED ON 1ST ORDER CONTROL ESTABLISHED BY USC & GS

IN 1966, ON NATIONAL GEODETIC VERTICAL DATUM 1929.

ELEVATION (FT) 07.78, 3RD ORDER LEVEL BOOK V7 PAGE 10