



**Deni Associates**  
 RT. 3, 11555 MARSHWOOD LN. S.W.  
 FORT MYERS, FL 33908

LEE COUNTY, FLORIDA  
 AERIAL MAPPING PROJECT

MAPPING BY  
 HAMRICK AERIAL SURVEYS, INC.  
 CLEARWATER, FLORIDA

DESIGNATION TBM-SFMV-24 COUNTY LEE STATE FL.

LOCATED IN SEC 24 TWP 45S RGE 24E USGS QUAD MAP FT. MYERS, S.E.

TO REACH SURVEY MARK FROM INT. U.S. 41 & GLADIOLAS DR.: GO N. 01.5 MI ± TO CYPRESS LAKE DR. / DANIELS RD. TO MARK.

TYPE OF MARK CHISELED "C" ON NORTH END OF HEADWALL DATE SET MARCH 1982

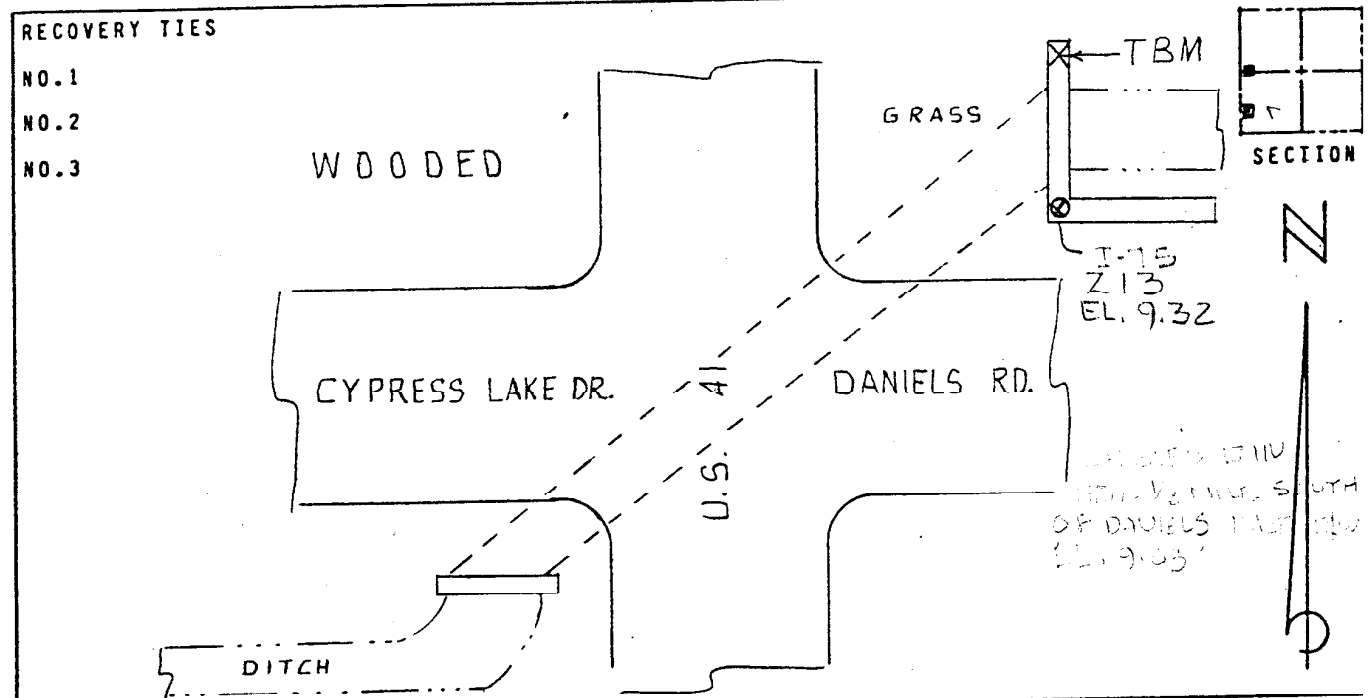
HORIZONTAL CONTROL ORIGINATED ON \_\_\_\_\_ ORDER CONTROL ESTABLISHED BY \_\_\_\_\_  
 IN \_\_\_\_\_, ON \_\_\_\_\_

COORDINATES (FT) NORTH (Y) \_\_\_\_\_ EAST (X) \_\_\_\_\_  
 \_\_\_\_\_ ORDER STATE AND ZONE \_\_\_\_\_

REFERENCE BEARINGS TO STATION OR OBJECT

DESCRIPTION	BEARING	DISTANCE

FIELD BOOK \_\_\_\_\_ PAGE \_\_\_\_\_ SKETCH BY C.L.B.



VERTICAL CONTROL ORIGINATED ON 1ST. ORDER CONTROL ESTABLISHED BY USC & GS

IN 1966, ON NATIONAL GEODETIC VERTICAL DATUM 1929

ELEVATION (FT) 09.34, 3RD ORDER LEVEL BOOK V-9 PAGE 18