



# Deni Associates

7025 N.W. 4th St. - Plantation, Florida 33317

## LEE COUNTY, FLORIDA AERIAL MAPPING PROJEC

MAPPING BY  
HAMRICK AERIAL SURVEYS, INC.  
CLEARWATER, FLORIDA

Marker Designation BM A260 (USC&GS) County LEE State FL

Located in Sec. 35 Twp. 45S Rge. 22E U.S.G.S. Quad Map PINE ISLAND CENTER 7.5min

To reach point from INT. OF SR. 78 & 767 IN PINE ISLAND CENTER. GO S. ON  
SR. 767 6.9 MI.± TO JUDE HARBOR RD. & MARKER.

Type of Marker BRASS DISC SET IN CONG. FLUSH W/GRD. Date ~~set~~ <sup>RECOVERED</sup> APRIL 19 81

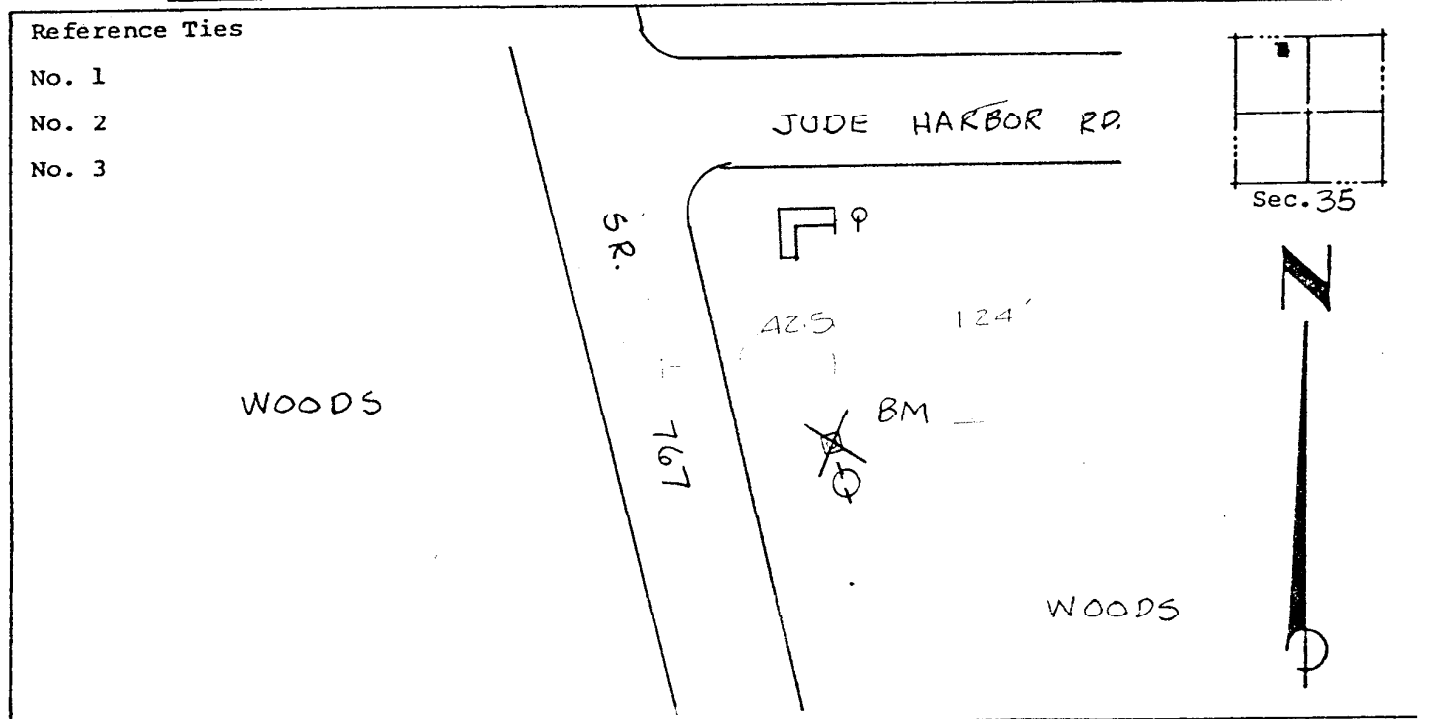
HORIZONTAL CONTROL originated on \_\_\_\_\_ order control established by \_\_\_\_\_ agency  
in \_\_\_\_\_ year, on \_\_\_\_\_ North American 1927 \_\_\_\_\_ datum.

Coordinates: North (y) \_\_\_\_\_ East (x) \_\_\_\_\_  
(feet) \_\_\_\_\_  
3rd Order State and Zone Florida, Mercator West

Reference Bearings to Station or Object:

Description	Bearing	Distance

Field Book \_\_\_\_\_ Page \_\_\_\_\_ Sketch by B.R. HOMOLA



VERTICAL CONTROL originated on 1<sup>st</sup> order control established by USC&GS agency

in 1966 year, on National Geodetic Survey Datum of 1929 datum.

Elevation 4.012 (feet), 3rd Order Level Book V4 Page 24