

LEE COUNTY, FLORIDA
AERIAL MAPPING PROJECT

MAPPING BY
HAMRICK AERIAL SURVEYS, INC.
CLEARWATER, FLORIDA



Dani Associates

RT. 3, 11555 MARSHWOOD LN. S.W.
FORT MYERS, FL 33908

DESIGNATION USL 865 F 242 - BM COUNTY LEE STATE FL

LOCATED IN SEC 3 TWP 45 S. RGE 24 E. USGS QUAD MAP FORT MYERS SW

TO REACH SURVEY MARK FROM INT. COLONIAL BLVD. / SR 88A & MCGREGOR BLVD. / SR 867
GO SW. 0.45 MI ± TO FOUNTAIN LN. & MARK.

TYPE OF MARK STANDARD DISC IN CONZ. DATE ^{RECOVERED} ~~SET~~ FEBRUARY 19 82

HORIZONTAL CONTROL ORIGINATED ON _____ ORDER CONTROL ESTABLISHED BY _____

IN _____, ON _____

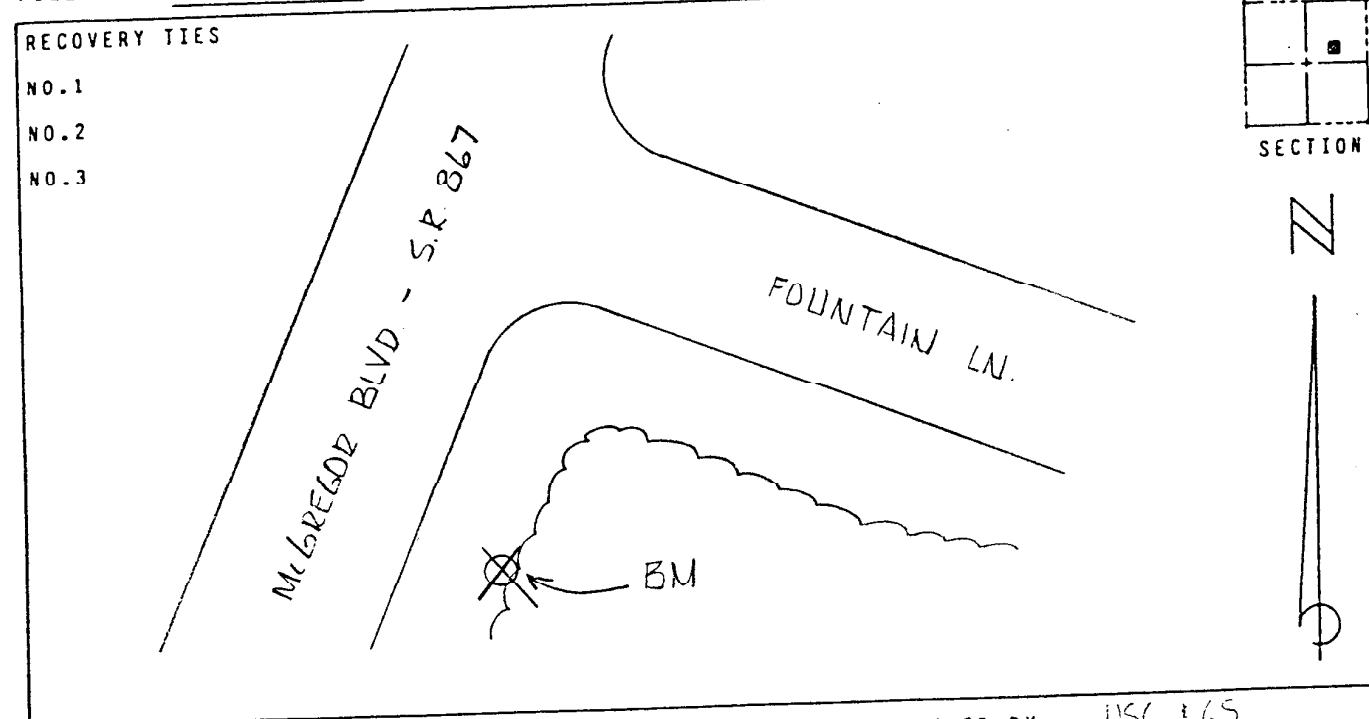
COORDINATES (FT) NORTH (Y) _____ EAST (X) _____

_____ ORDER STATE AND ZONE _____

REFERENCE BEARINGS TO STATION OR OBJECT

DESCRIPTION	BEARING	DISTANCE
_____	_____	_____
_____	_____	_____
_____	_____	_____

FIELD BOOK _____ PAGE _____ SKETCH BY D.W. ALBERTSEN



VERTICAL CONTROL ORIGINATED ON 1ST ORDER CONTROL ESTABLISHED BY USL 865

IN 1966, ON NATIONAL GEODETIC VERTICAL DATUM 1929

ELEVATION (FT) 10.541, 1ST ORDER LEVEL BOOK V6 PAGE 49