



Deni Associates

7025 N.W. 4th St. - Plantation, Florida 33317

LEE COUNTY, FLORIDA  
AERIAL MAPPING PROJECT

MAPPING BY  
HAMRICK AERIAL SURVEYS, INC.  
CLEARWATER, FLORIDA

Marker Designation BM Q 241 (USC&GS) County LEE State FL  
Located in Sec. 15 Twp. 45S Rge. 22E U.S.G.S. Quad Map PINE ISLAND CENTER 7.5mi

To reach point from INT. OF SR. 78 & 767 IN PINE ISLAND CENTER. GO S. ON SR. 767  
4.1 MI. ± TO MARKER.

Type of Marker FLD. SRD. DISC. SET IN TOP OF CONC. HEADWALL Date <sup>RECOVERED</sup> ~~set~~ APRIL 19 81

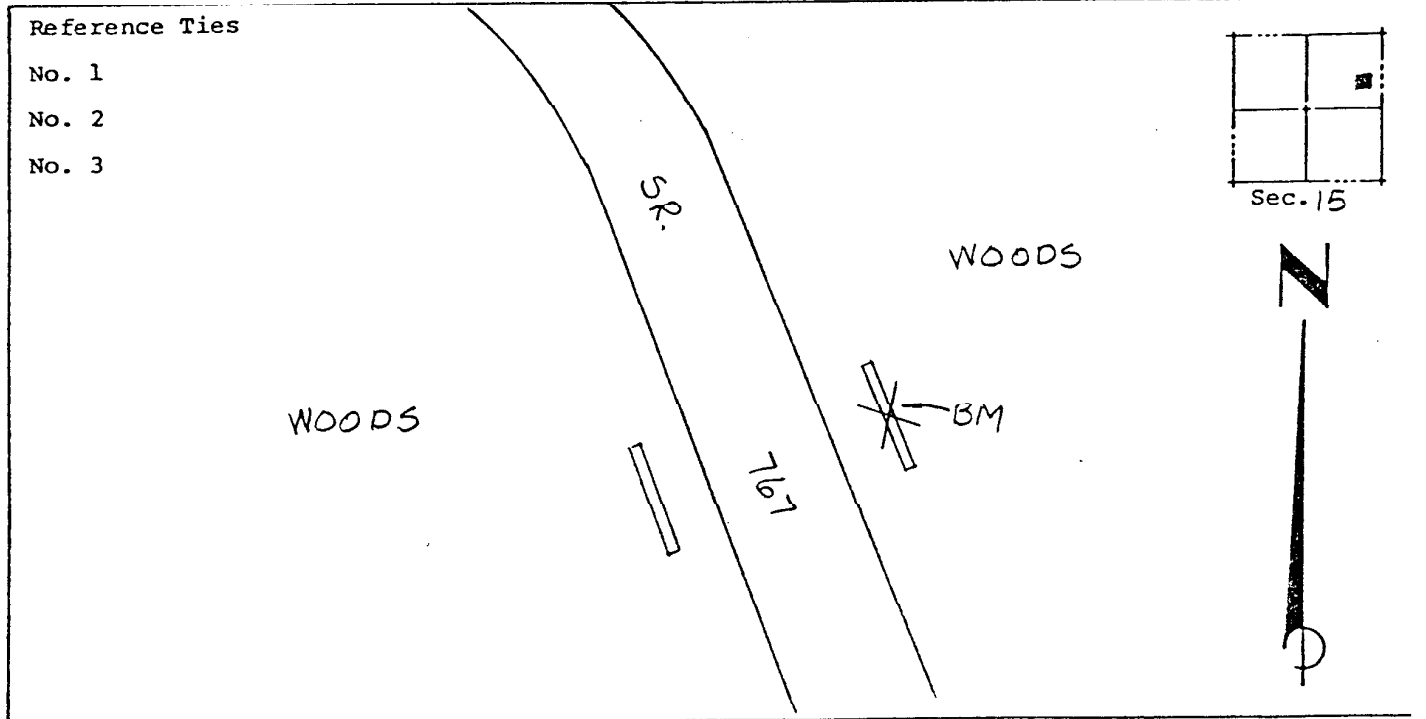
HORIZONTAL CONTROL originated on \_\_\_\_\_ order control established by \_\_\_\_\_  
in \_\_\_\_\_, on \_\_\_\_\_ North American 1927 \_\_\_\_\_ datum. \_\_\_\_\_ agency

Coordinates: North (y) \_\_\_\_\_ East (x) \_\_\_\_\_  
(feet) \_\_\_\_\_  
3rd Order State and Zone Florida, Mercator West

Reference Bearings to Station or Object:

Description	Bearing	Distance

Field Book \_\_\_\_\_ Page \_\_\_\_\_ Sketch by B.R. HOMOLA



VERTICAL CONTROL originated on 1<sup>ST</sup> order control established by USC&GS agency

in 1966, on National Geodetic Survey Datum of 1929 datum.  
year  
Elevation 9.393, 3rd Order Level Book V4 Page 9