



# Deni Associates

7025 N.W. 4th St. • Plantation, Florida 33317

## LEE COUNTY, FLORIDA AERIAL MAPPING PROJECT

MAPPING BY  
HAMRICK AERIAL SURVEYS, INC.  
CLEARWATER, FLORIDA

Marker Designation TBM PISV-5 County LEE State FL

Located in Sec. 14 Twp. 45 S Rge. 22 E U.S.G.S. Quad Map Pine Island Center 7.5min

To reach point from INT. OF SR. 78 & 767 IN PINE ISLAND CENTER: GO S. ON SR. 767  
4.7 MI. ± TO TRANSMISSION LINES & MARKER.

Type of Marker 8" SPIKE IN W. FACE OF P. POLE Date set April 19 81

HORIZONTAL CONTROL originated on \_\_\_\_\_ order control established by \_\_\_\_\_

in \_\_\_\_\_, on \_\_\_\_\_ North American 1927 datum. agency \_\_\_\_\_

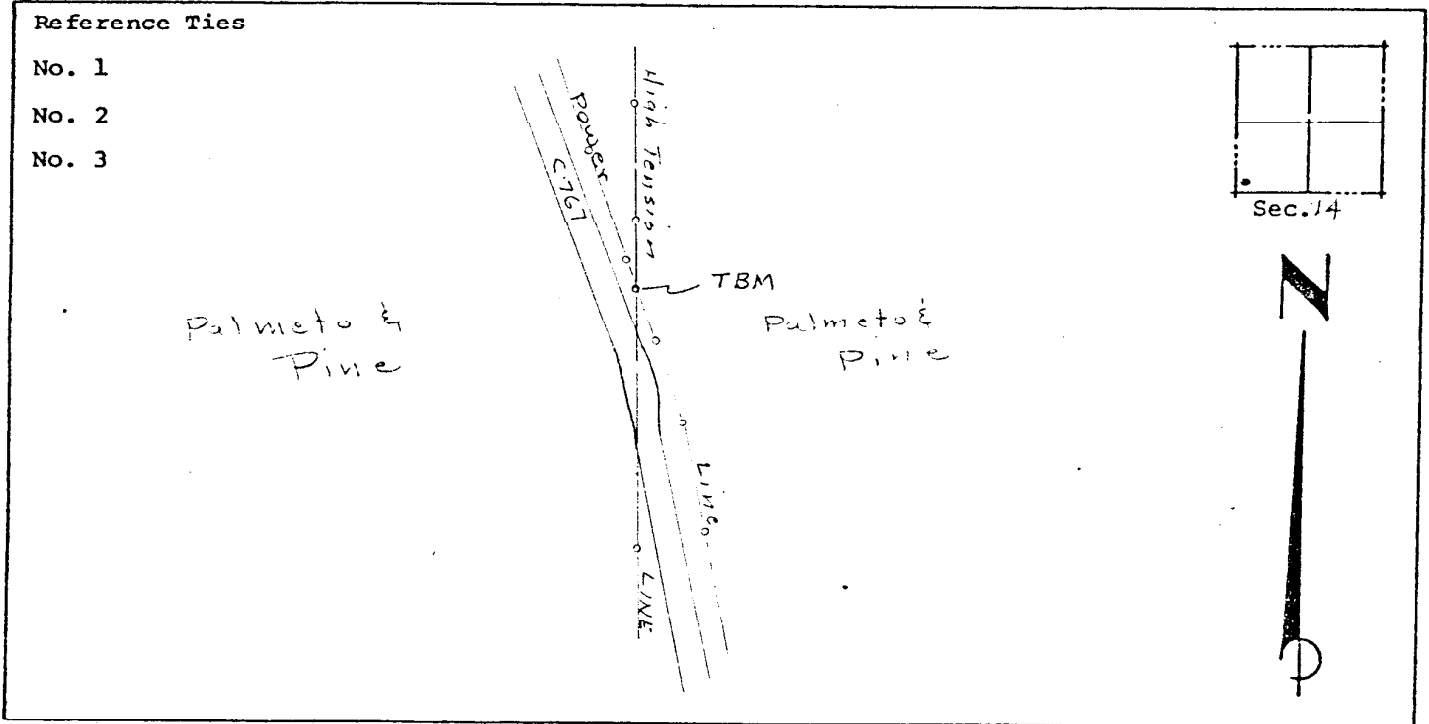
Coordinates: North (y) \_\_\_\_\_ East (x) \_\_\_\_\_  
(feet)

3rd Order State and Zone Florida, Mercator West

Reference Bearings to Station or Object:

Description	Bearing	Distance

Field Book \_\_\_\_\_ Page \_\_\_\_\_ Sketch by B. RENFRO



- Reference Ties
- No. 1
  - No. 2
  - No. 3

VERTICAL CONTROL originated on 1<sup>ST</sup> order control established by USCGS agency

in 1966, on National Geodetic Survey Datum of 1929 datum.

Elevation 8.53, 3rd Order Level Book 44 Page 11

(feet)