



# Deni Associates

7025 N.W. 4th St. - Plantation, Florida 33317

## LEE COUNTY, FLORIDA AERIAL MAPPING PROJECT

MAPPING BY  
HAMRICK AERIAL SURVEYS, INC.  
CLEARWATER, FLORIDA

Marker Designation BM Y 259 (USCGS) County LEE State FL

Located in Sec. 23 Twp. 45S Rge. 22E U.S.G.S. Quad Map PINE ISLAND CENTER 7.5min

To reach point from INT. OF SR. 78 & 767 IN PINE ISLAND CENTER: GO S. ON SR. 767  
5.8 MI.± TO SUNSHINE BLVD. & MARKER.

Type of Marker SRD Disk in E Hdwl Date <sup>RECOVERED</sup> ~~set~~ APRIL 19 81

HORIZONTAL CONTROL originated on \_\_\_\_\_ order control established by \_\_\_\_\_

in \_\_\_\_\_, on \_\_\_\_\_ North American 1927 datum. \_\_\_\_\_ agency

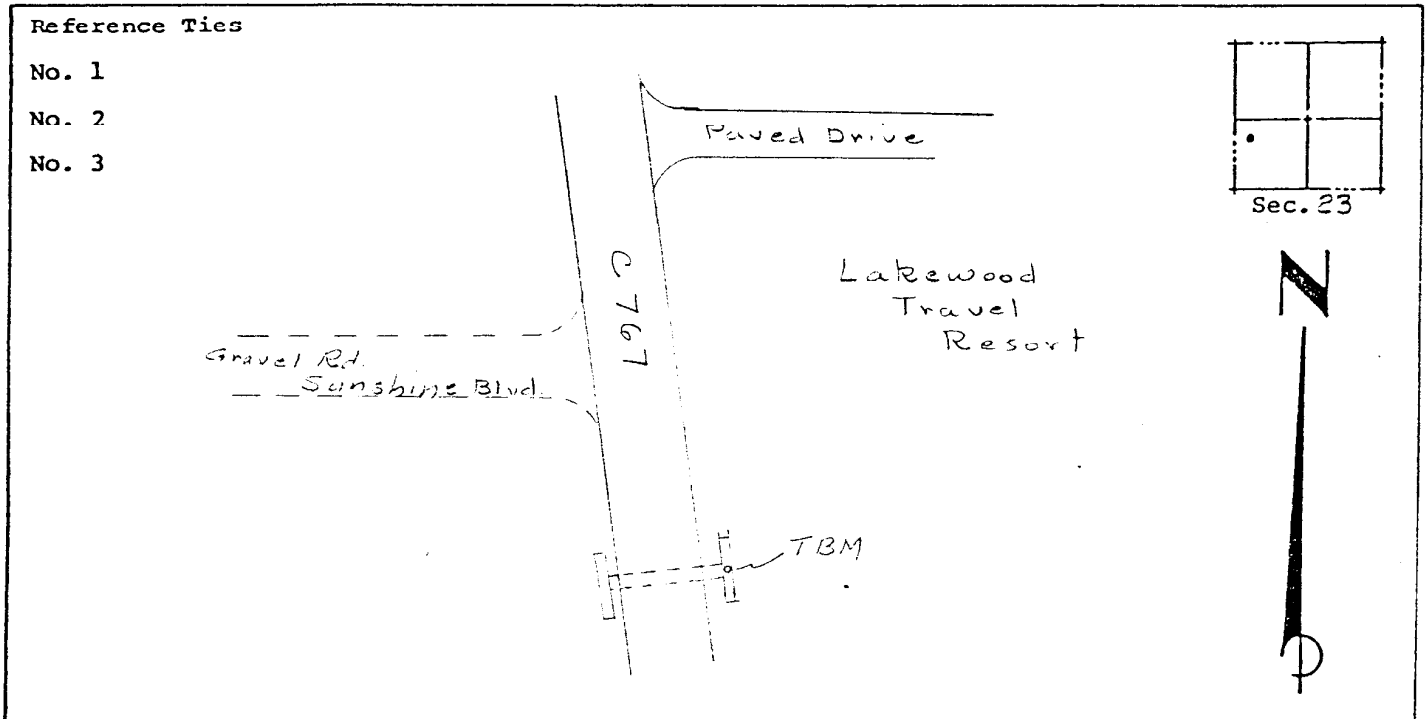
Coordinates: North (y) \_\_\_\_\_ East (x) \_\_\_\_\_  
(feet)

3rd Order State and Zone Florida, Mercator West

Reference Bearings to Station or Object:

Description	Bearing	Distance

Field Book \_\_\_\_\_ Page \_\_\_\_\_ Sketch by Renfro



VERTICAL CONTROL originated on 1<sup>ST</sup> order control established by USCGS agency

in 1966, on National Geodetic Survey Datum of 1929 datum.

year \_\_\_\_\_  
Elevation 7.30, 3rd Order Level Book V4 Page 12  
(feet)