



Deni Associates

7025 N.W. 4th St. - Plantation, Florida 33317

LEE COUNTY, FLORIDA
AERIAL MAPPING PROJECT

MAPPING BY
HAMRICK AERIAL SURVEYS, INC.
CLEARWATER, FLORIDA

Marker Designation BM L241 (USC&GS) County LEE State FL

Located in Sec. 4 Twp. 45S Rge. 22E U.S.G.S. Quad map PINE ISLAND CENTER 7.5min.

To reach point from INT. OF SR. 78 & 767 IN PINE ISLAND CENTER. GO S. ON
SR. 767 1.5 MI. ± TO MARIA RD. & MARKER.

Type of Marker BRASS FLA. SRD. DISC. SET IN CONG. HEADWALL Date ^{RECOVERED} set MARCH 19 81

HORIZONTAL CONTROL originated on _____ order control established by _____ agency

in _____, on _____ North American 1927 _____ datum.

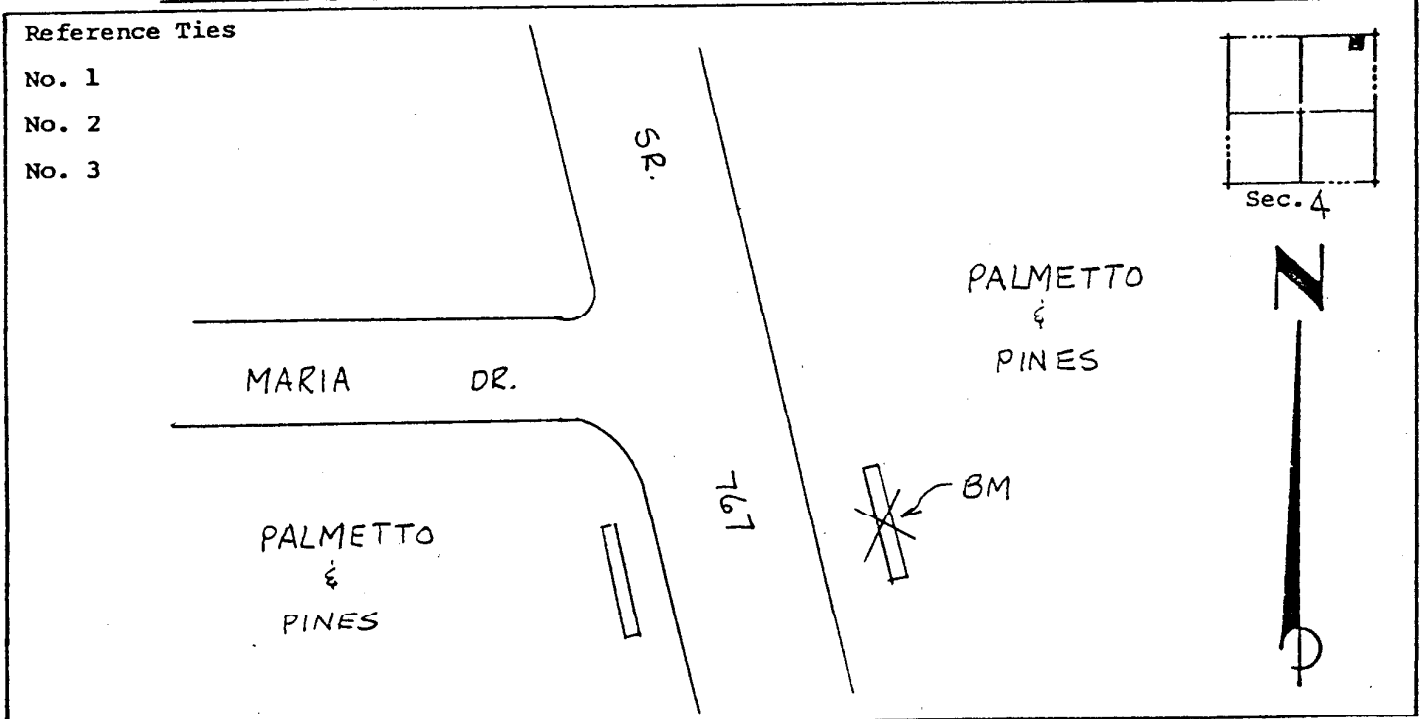
Coordinates: North (y) _____ East (x) _____

(feet) _____ 3rd Order State and Zone Florida, Mercator West

Reference Bearings to Station or Object:

| Description | Bearing | Distance |
|-------------|---------|----------|
| | | |
| | | |
| | | |

Field Book _____ Page _____ Sketch by B. R. HOMOLA



VERTICAL CONTROL originated on 1st order control established by USC&GS agency

in 1966, on National Geodetic Survey Datum of 1929 datum.

year _____ Elevation 7.736, _____ 3rd Order Level Book V4 Page 3