



7025 N.W. 4th St. - Plantation, Florida 33317

U.S.D.A. SOIL CONSERVATION SERVICE

MAPPING BY

HAMRICK AERIAL SURVEYS, INC.  
CLEARWATER, FLORIDA

Marker Designation TBM SV-29 County LEE State FL  
Located in Sec. 13 Twp. 43 S. Rge. 24 E. U.S.G.S. Quad Map FORT MYERS 7.5min

To reach point from INT. OF US 41 & RTE. 78 IN N. FT. MYERS. GO E. ON RTE. 78  
2.2 MI. TO HART RD. N. GO N. 1.3 MI. TO LAUREL LN. NE. THEN E. 0.3 MI. TO  
TO BARTHOLOMEW RD. NE. THEN N. 1.25 MI. TO END OF RD. THEN E. 300' TO  
TO A N-S RD. HEAD N. 0.15 MI. TO TWO ANGLE POINTS IN POWER LINE &  
MARKER.

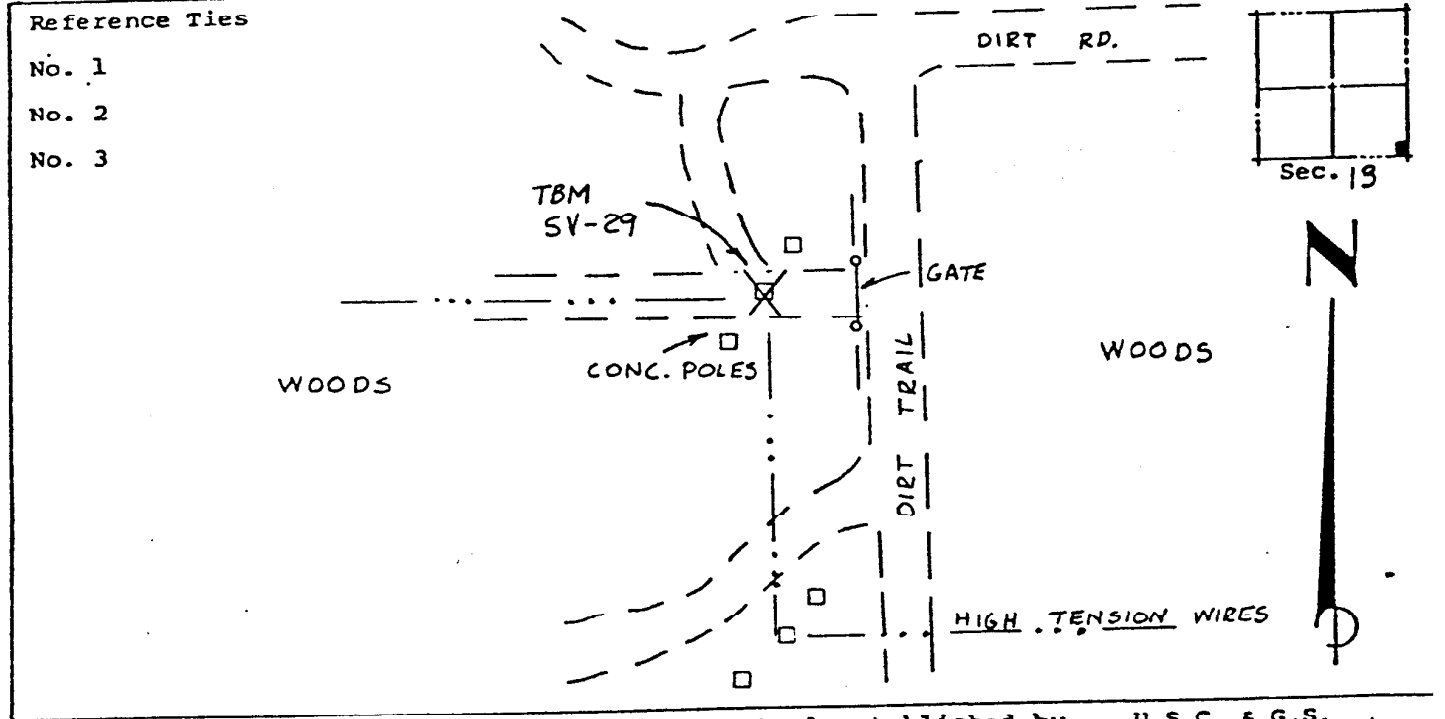
Type of Marker CHISELED + SET VERT. INS. FACE OF CONC. POLE Date set NOV. - DEC. 19 80  
HORIZONTAL CONTROL originated on \_\_\_\_\_ order control established by \_\_\_\_\_ agency

in \_\_\_\_\_, on North American 1927 datum.  
Coordinates: North (y) \_\_\_\_\_ East (x) \_\_\_\_\_  
(feet) 3rd Order State and Zone Florida, Mercator West

Reference Bearings to Station or Object:

Description	Bearing	Distance

Field Book 1 Page \_\_\_\_\_ Sketch by B.R. HOMOLA



VERTICAL CONTROL originated on 1st order control established by U.S.C. & G.S. agency  
in 1966, on National Geodetic Survey Datum of 1929 datum.  
Elevation 18.39, 3rd Order Level Book 2 Page 15