



# Deni Associates

7025 N.W. 4th St. • Plantation, Florida 33317

## LEE COUNTY, FLORIDA AERIAL MAPPING PROJEC

MAPPING BY  
HAMRICK AERIAL SURVEYS, INC.  
CLEARWATER, FLORIDA

Marker Designation TBM PISV-25 County LEE State FL

Located in Sec. 26 Twp. 43S Rge. 20E U.S.G.S. Quad Map PORT ROCA GRANDE 7.5min

To reach point from INT. GASPARILLA RD. & LEE-CHARLOTTE CO. LINE:  
GO S. 3.1 MI ± TO "T" IN ROAD; THENCE W 0.1 MI ± TO GULF BLVD.;  
THENCE CONTINUE S 1.55 MI ± TO MARKER.

Type of Marker 8" SPK IN W. FACE OF P POLE Date set FEB. 19 81

HORIZONTAL CONTROL originated on \_\_\_\_\_ order control established by \_\_\_\_\_ agency

in \_\_\_\_\_, on \_\_\_\_\_ North American 1927 datum.

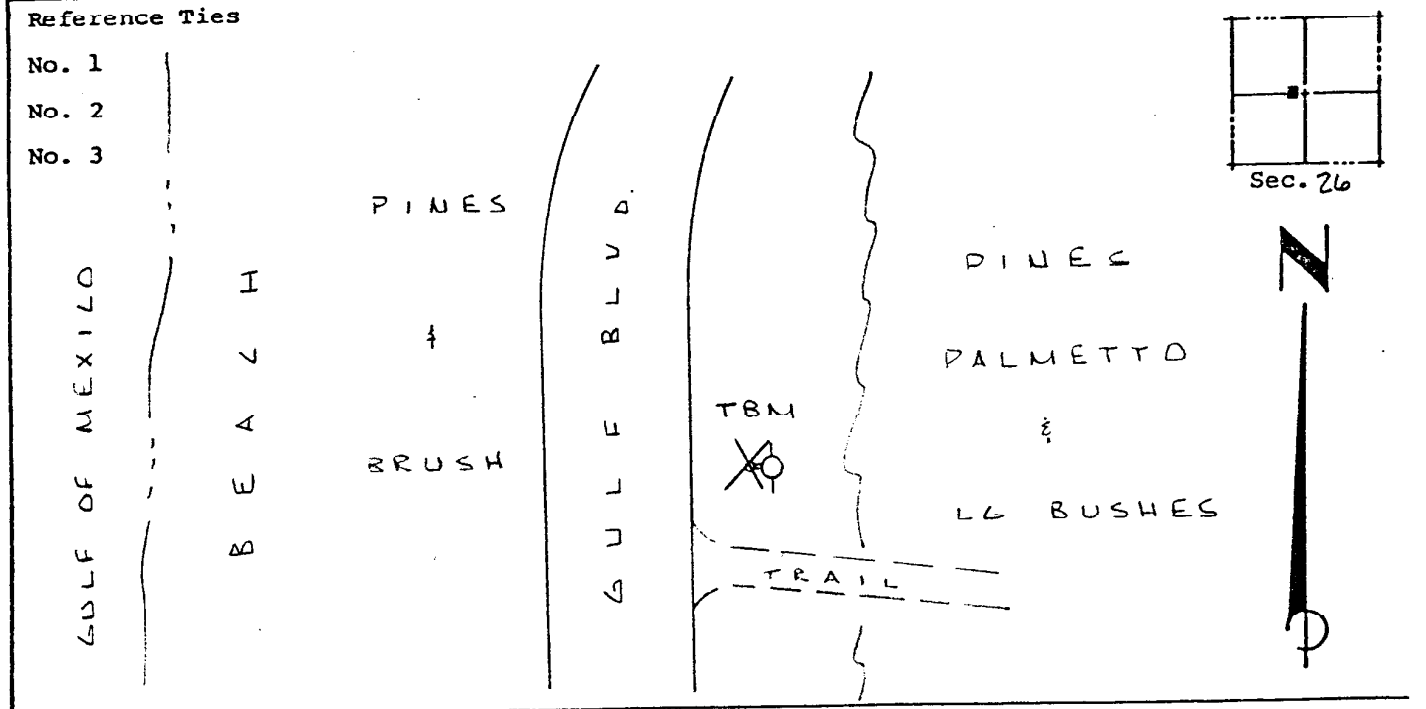
Coordinates: North (y) \_\_\_\_\_ East (x) \_\_\_\_\_  
(feet)

3rd Order State and Zone Florida, Mercator West

Reference Bearings to Station or Object:

Description	Bearing	Distance

Field Book \_\_\_\_\_ Page \_\_\_\_\_ Sketch by A. LETHERBY



VERTICAL CONTROL originated on 3<sup>RD</sup> order control established by DNR agency

in 1975, on National Geodetic Survey Datum of 1929 datum.

Elevation 05.63, 3rd Order Level Book V3 Page 47  
(feet)