



**Deni Associates**  
 RT. 3, 11555 MARSHWOOD LN. S.W.  
 FORT MYERS, FL 33908

LEE COUNTY, FLORIDA  
 AERIAL MAPPING PROJECT

MAPPING BY  
 HAMRICK AERIAL SURVEYS, INC.  
 CLEARWATER, FLORIDA

DESIGNATION TBM NFMV-8 COUNTY LEE STATE FL.  
 LOCATED IN SEC 21 TWP 43S RGE 24E USGS QUAD MAP FT MYERS N.W.

TO REACH SURVEY MARK FROM INT. OF US41 & BUS. 41 IN N. FT. MYERS: GO N. OF  
US. 41 0.9 MI.± TO DIRT RD.; THENCE W. 1.0 MI.± TO DEKAVARRA  
PKWY. & GARDEN BLVD.; THENCE S. ON GARDEN BLVD. 0.4 MI.± TO  
NE. 35TH ST. & MARK.

TYPE OF MARK RR. SPIKE IN E. EGDE OF PAVEMENT DATE SET MARCH 19 82

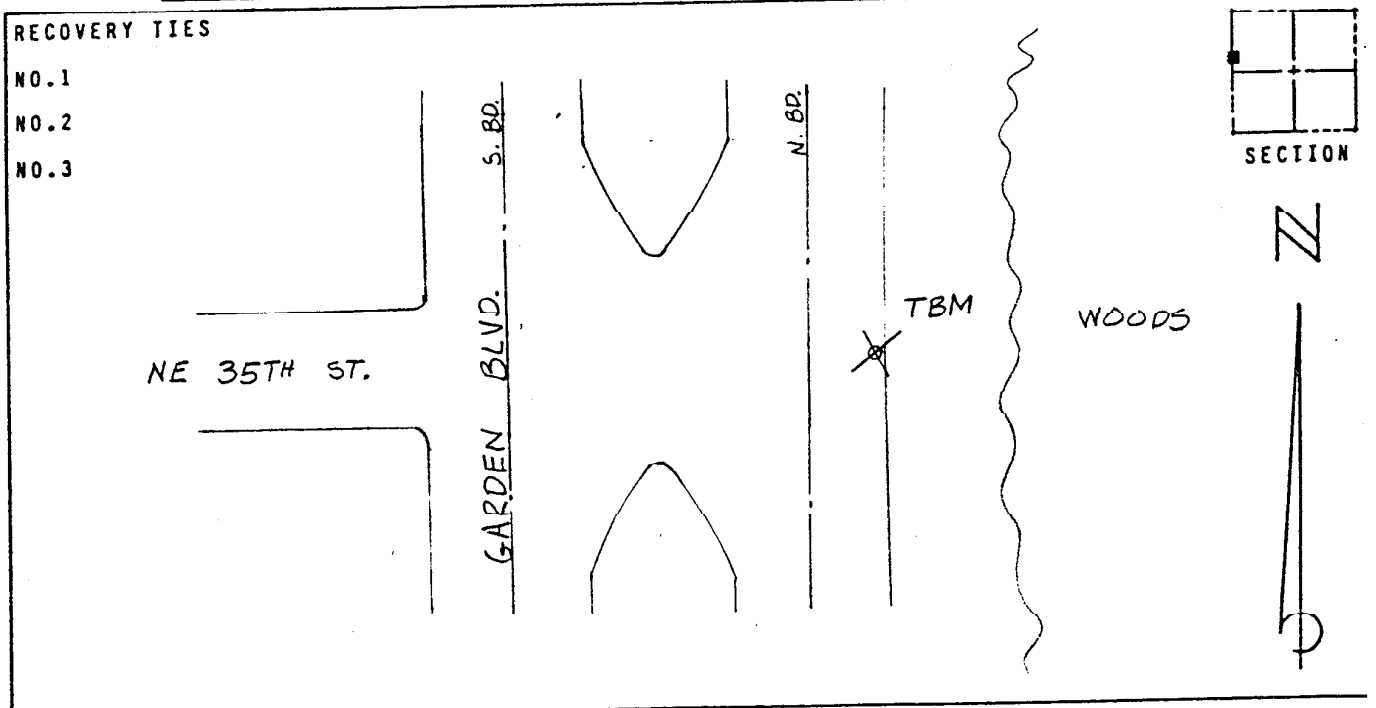
HORIZONTAL CONTROL ORIGINATED ON \_\_\_\_\_ ORDER CONTROL ESTABLISHED BY \_\_\_\_\_  
 IN \_\_\_\_\_, ON \_\_\_\_\_.

COORDINATES (FT) NORTH (Y) \_\_\_\_\_ EAST (X) \_\_\_\_\_  
 \_\_\_\_\_ ORDER STATE AND ZONE \_\_\_\_\_

REFERENCE BEARINGS TO STATION OR OBJECT

DESCRIPTION	BEARING	DISTANCE
_____	_____	_____
_____	_____	_____
_____	_____	_____

FIELD BOOK \_\_\_\_\_ PAGE \_\_\_\_\_ SKETCH BY KET



VERTICAL CONTROL ORIGINATED ON 1ST ORDER CONTROL ESTABLISHED BY USC & GS  
 IN 1966, ON NATIONAL GEODETIC VERTICAL DATUM 1929.

ELEVATION (FT) 16.24, 3RD ORDER LEVEL BOOK V6 PAGE 63