



LEE COUNTY, FLORIDA
AERIAL MAPPING PROJECT

MAPPING BY:
WOOLPERT CONSULTANTS

DESIGNATION TBM 20-30 COUNTY LEE STATE FL
LOCATED IN SEC 36 TWP 44S RGE 27E USGS QUAD MAP ALVA SE
TO REACH SURVEY MARK FROM WELLINGTON AV & LEECLAND HEIGHTS
BLVD; GO SOUTH TO ADDRESS #5 WELLINGTON AV.
& MARK.

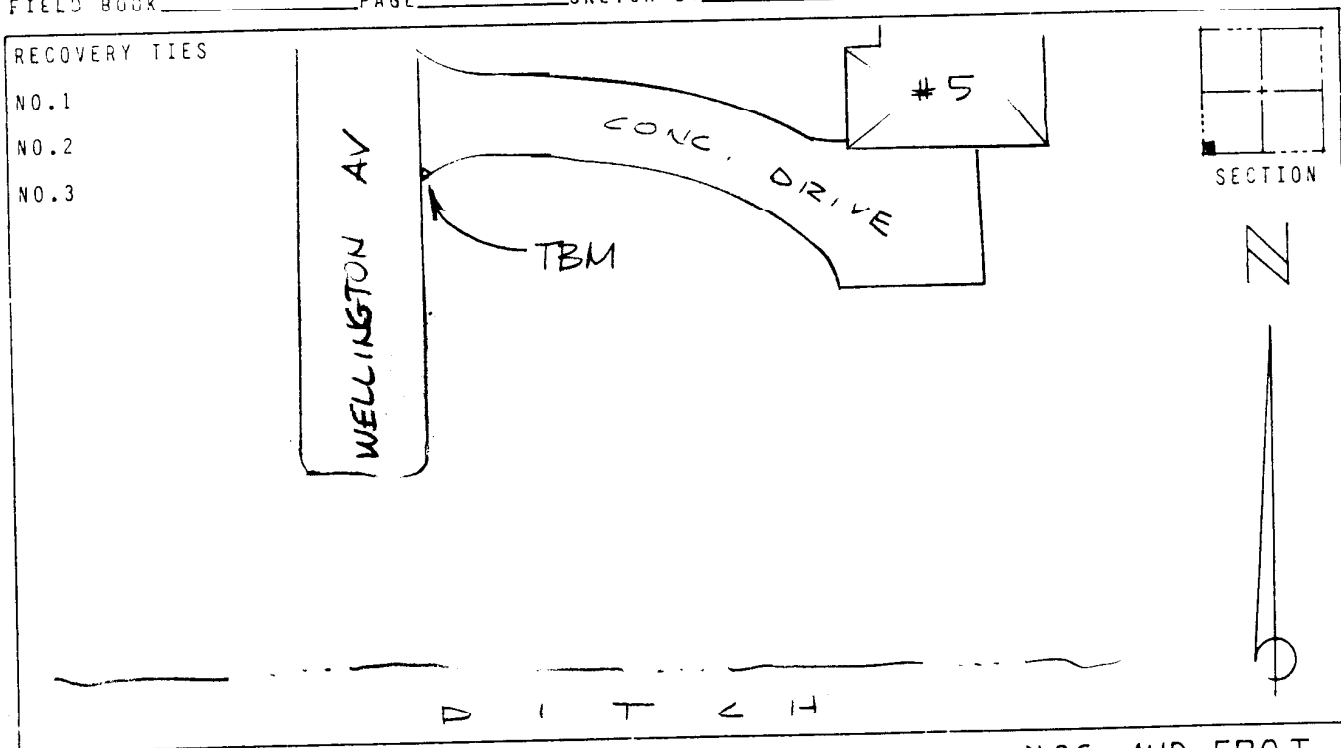
TYPE OF CHISELED "□" ON SOUTHWEST CORNER OF
MARK CONCRETE DRIVE DATE SET DEC. 1988

HORIZONTAL CONTROL ORIGINATED ON 2ND ORDER CONTROL BY N.G.S. AND F.D.O.T.
ON NORTH AMERICAN DATUM OF 1927 (1927 ADJ) ON NORTH AMERICAN DATUM OF 1983

COORDINATES (FT) COORDINATES (FT)
NORTHING (Y) _____ NORTHING (Y) _____
EASTING (X) _____ EASTING (X) _____

3RD ORDER COORDINATES STATE AND ZONE FLORIDA, MERCATOR WEST

FIELD BOOK _____ PAGE _____ SKETCH BY DSW



VERTICAL CONTROL ORIGINATED ON 2ND ORDER CONTROL ESTABLISHED BY N.G.S. AND F.D.O.T.
ON NATIONAL GEODETIC VERTICAL DATUM OF 1929

ELEVATION (FT) 26.63, 3RD ORDER LEVEL BOOK V20 PAGE 30