



Deni Assoc  
FORT MYERS, FLORIDA

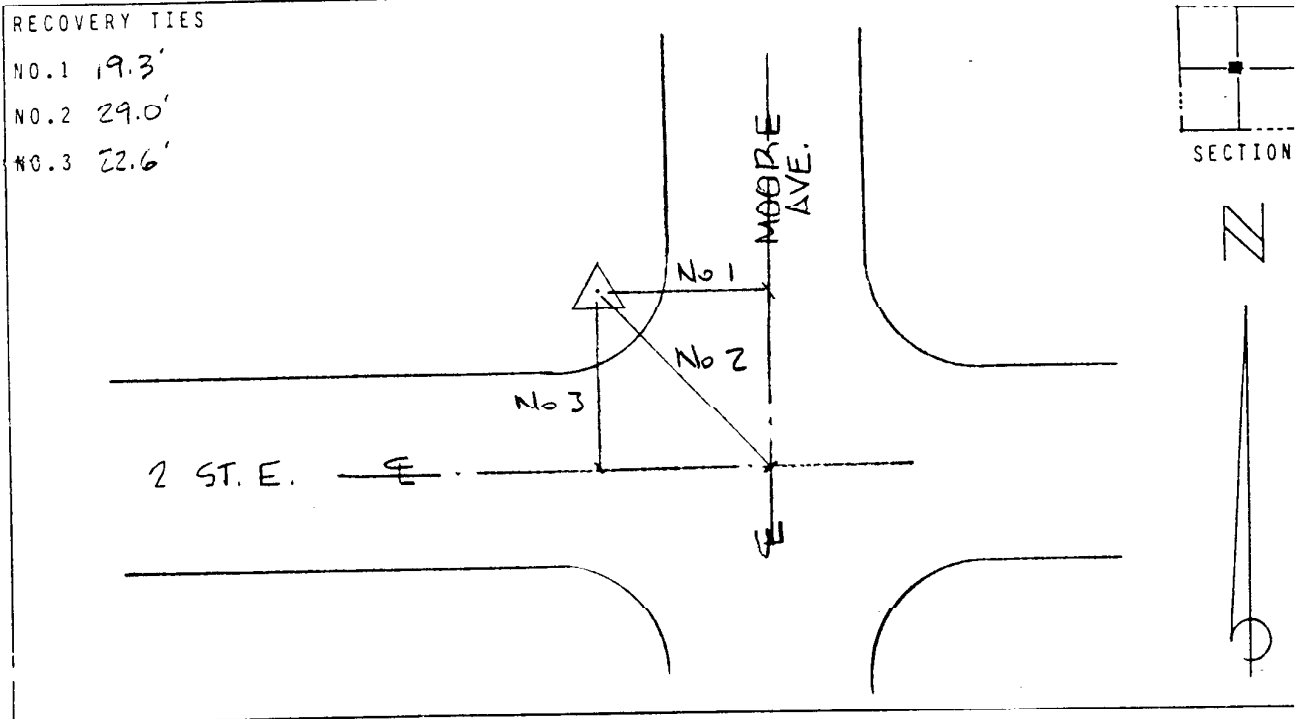
LEE COUNTY, FLORIDA  
AERIAL MAPPING PROJECT

MAPPING BY:  
WOOLPERT CONSULTANTS

DESIGNATION LH 33 & TBM COUNTY LEE STATE FL  
 LOCATED IN SEC 36 TWP 44 S RGE 27 E USGS QUAD MAP ALVA SE  
 TO REACH SURVEY MARK FROM AT INTERSECTION AS SHOWN IN LEHIGH.

TYPE OF 2" ALUM. CAP ON RE-BAR  
 MARK 0.4 BLW. GRD. DATE SET JULY 1988  
 HORIZONTAL CONTROL ORIGINATED ON 2ND ORDER CONTROL BY N.G.S. AND F.D.O.T.  
 ON NORTH AMERICAN DATUM OF 1927 (1927 ADJ) ON NORTH AMERICAN DATUM OF 1983  
 COORDINATES (FT) COORDINATES (FT)  
 NORTHING (Y) 826434.368 NORTHING (Y) \_\_\_\_\_  
 EASTING (X) 639059.523 EASTING (X) \_\_\_\_\_  
3RD ORDER COORDINATES STATE AND ZONE FLORIDA, MERCATOR WEST

FIELD BOOK H 8 PAGE 41 SKETCH BY DSW



VERTICAL CONTROL ORIGINATED ON 2ND ORDER CONTROL ESTABLISHED BY N.G.S. AND F.D.O.T.  
 ON NATIONAL GEODETIC VERTICAL DATUM OF 1929  
 ELEVATION (FT) 25.87 , 3RD ORDER LEVEL BOOK Y 20 PAGE 17