



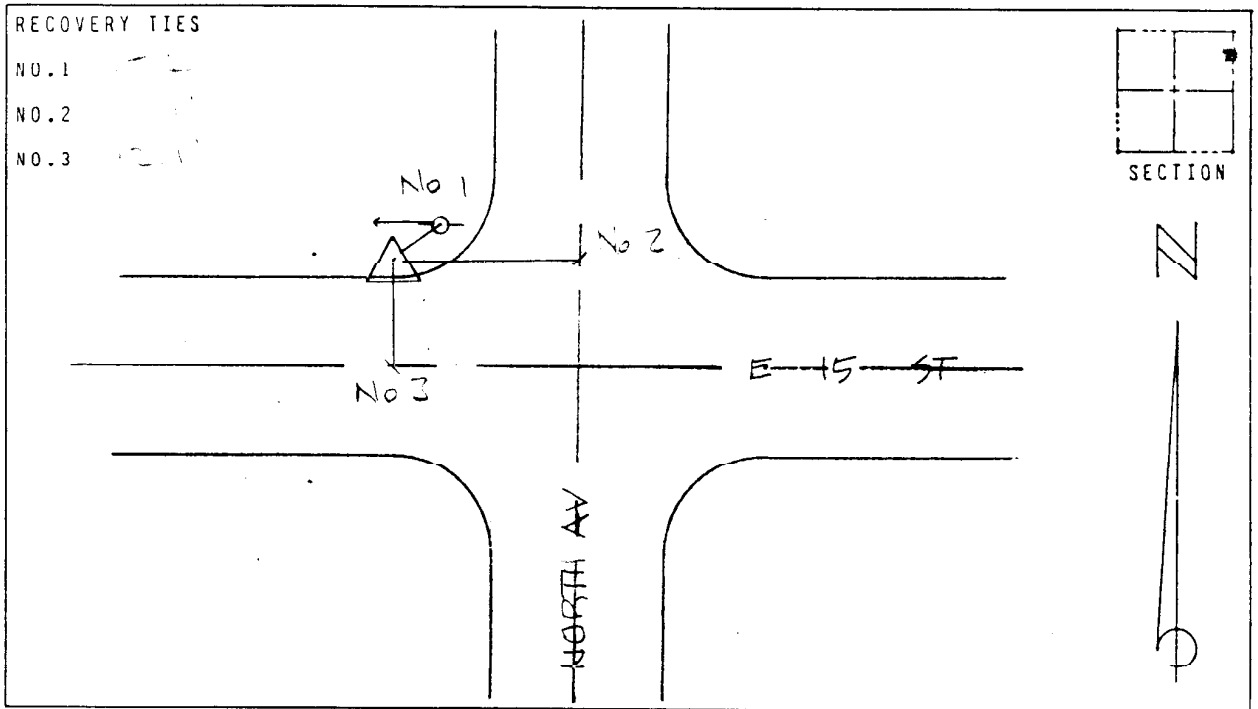
LEE COUNTY, FLORIDA  
AERIAL MAPPING PROJECT

MAPPING BY:  
WOOLPERT CONSULTANTS

DESIGNATION LH 18 (NO 47) & TBM COUNTY LEE STATE FL  
LOCATED IN SEC 16 TWP 24S RGE 27 E USGS QUAD MAP ALVA  
TO REACH SURVEY MARK FROM  
AT INTERSECTION AS SHOWN IN LEHIGH ACRES.

TYPE OF LEVELING MARK LEVELING DATE SET AUGUST 1988  
HORIZONTAL CONTROL ORIGINATED ON 2ND ORDER CONTROL BY N.G.S. AND F.D.O.T.  
ON NORTH AMERICAN DATUM OF 1927 (1927 ADJ) ON NORTH AMERICAN DATUM OF 1983  
COORDINATES (FT) NORTHING (Y) 813,676.200 EASTING (X) 559,117.10  
3RD ORDER COORDINATES STATE AND ZONE FLORIDA, MERCATOR WEST

FIELD BOOK H8 PAGE 35 SKETCH BY DSW



VERTICAL CONTROL ORIGINATED ON 2ND ORDER CONTROL ESTABLISHED BY N.G.S. AND F.D.O.T.  
ON NATIONAL GEODETIC VERTICAL DATUM OF 1929  
ELEVATION (FT) 22.13 , 3RD ORDER LEVEL BOOK V 18 PAGE 9