



Deni Associates
FORT MYERS, FLORIDA

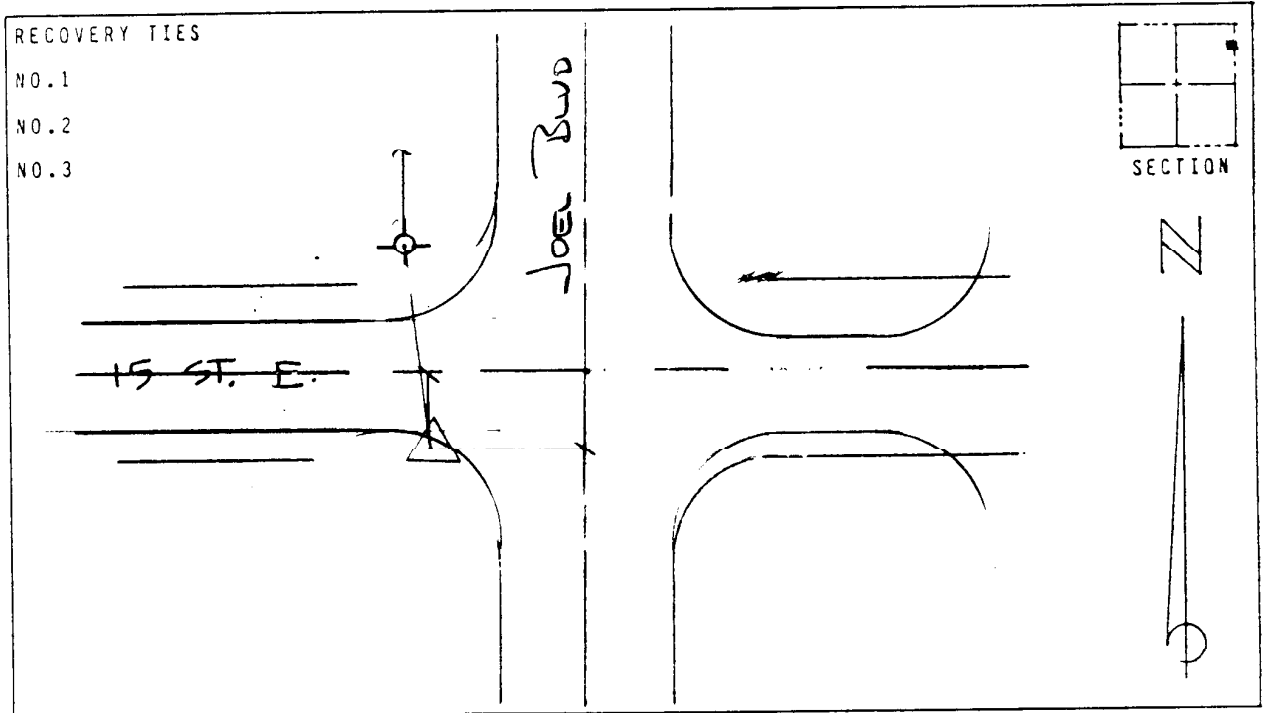
LEE COUNTY, FLORIDA
AERIAL MAPPING PROJECT

MAPPING BY:
WOOLPERT CONSULTANTS

DESIGNATION LH 40 COUNTY LEE STATE FL
LOCATED IN SEC 15 TWP 4S RGE 27 E USGS QUAD MAP ALVA
TO REACH SURVEY MARK FROM _____
AT INTERSECTION AS SHOWN IN LEHIGH ACRES

TYPE OF 2" Alum CAP ON RE BAR
MARK 0.1' Blw CRD DATE SET AUGUST 1988
HORIZONTAL CONTROL ORIGINATED ON 2ND ORDER CONTROL BY N.G.S. AND F.D.O.T.
ON NORTH AMERICAN DATUM OF 1927 (1927 ADJ) ON NORTH AMERICAN DATUM OF 1983
COORDINATES (FT) COORDINATES (FT)
NORTHING (Y) 843,739.170 NORTHING (Y) _____
EASTING (X) 621,194.169 EASTING (X) _____
3RD ORDER COORDINATES STATE AND ZONE FLORIDA, MERCATOR WEST

FIELD BOOK HB PAGE 47 SKETCH BY DSW



VERTICAL CONTROL ORIGINATED ON 2ND ORDER CONTROL ESTABLISHED BY N.G.S. AND F.D.O.T.
ON NATIONAL GEODETIC VERTICAL DATUM OF 1929
ELEVATION (FEET) 22.93 3RD ORDER LEVEL BOOK V 18 PAGE 10