



Deni Associates
FORT MYERS, FLORIDA

LEE COUNTY, FLORIDA
AERIAL MAPPING PROJECT

MAPPING BY:
WOOLPERT CONSULTANTS

DESIGNATION TBM 21-39 COUNTY LEE STATE FL
 LOCATED IN SEC 20 TWP 44S RGE 27E USGS QUAD MAP OLGA
 TO REACH SURVEY MARK FROM INTERSECTION AS SHOWN
IN LEHIGH ACRES

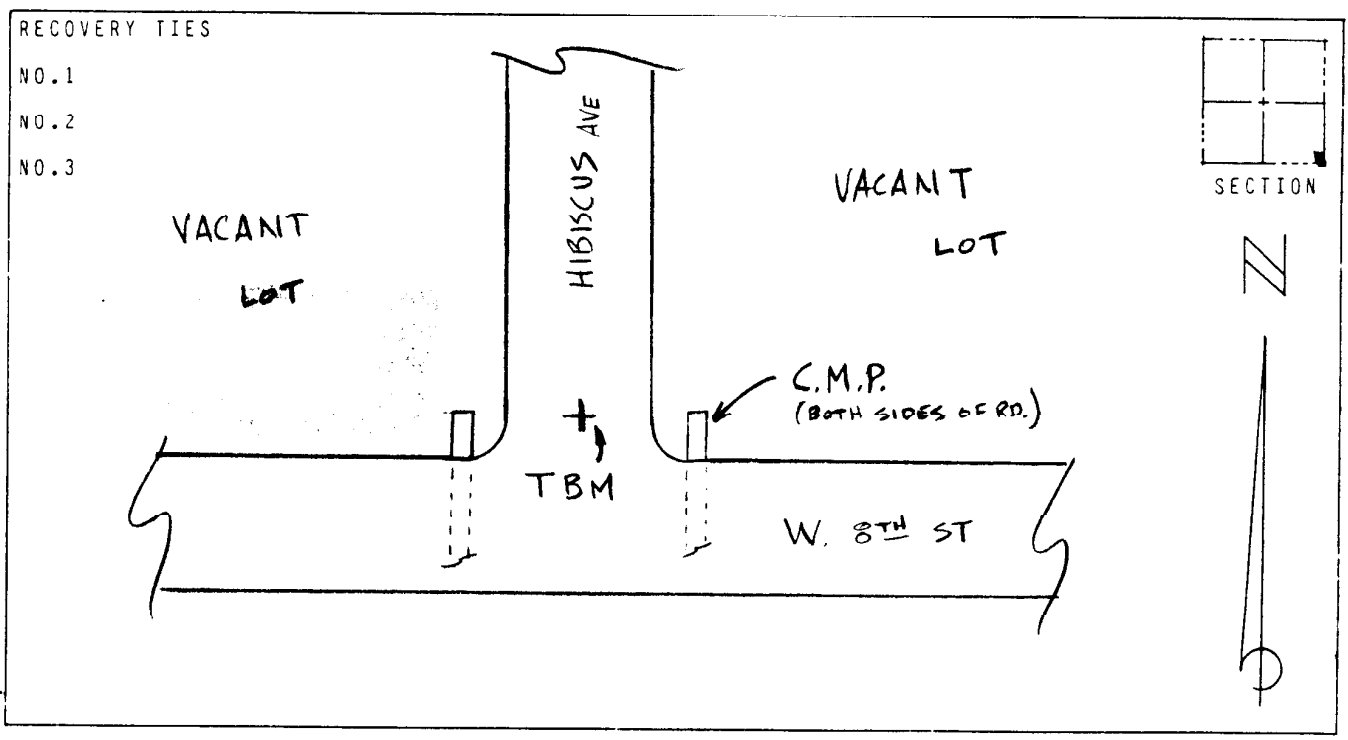
TYPE OF 3" SPK & TAB @ HIBISCUS AVE 25' N OF E. W. 8TH ST.
 MARK _____ DATE SET DEC. 19 88

HORIZONTAL CONTROL ORIGINATED ON 2ND ORDER CONTROL BY N.G.S. AND F.D.O.T.
 ON NORTH AMERICAN DATUM OF 1927 (1927 ADJ) ON NORTH AMERICAN DATUM OF 1983

COORDINATES (FT) COORDINATES (FT)
 NORTHING (Y) _____ NORTHING (Y) _____
 EASTING (X) _____ EASTING (X) _____

3RD ORDER COORDINATES STATE AND ZONE FLORIDA, MERCATOR WEST

FIELD BOOK _____ PAGE _____ SKETCH BY WGH



VERTICAL CONTROL ORIGINATED ON 2ND ORDER CONTROL ESTABLISHED BY N.G.S. AND F.D.O.T.
 ON NATIONAL GEODETIC VERTICAL DATUM OF 1929
 ELEVATION (FT) 23.42, 3RD ORDER LEVEL BOOK V 21 PAGE 39