



7025 N.W. 4th St. - Plantation, Florida 33317

U.S.D.A. SOIL CONSERVATION SERVICE

MAPPING BY

HARRICK AERIAL SURVEYS, INC.  
CLEARWATER, FLORIDA

Marker Designation TBM SV-51 County LEE State FL

Located in Sec. 16 Twp. 43 S. Rge. 24 E. U.S.C.S. Quad Map FT. MYERS NW 7.5min

To reach point from INT. OF S.R. 73 / BAYSHORE RD. & U.S. 41 /  
CLEVELAND AV : GO N. 3.9 MI ± TO TBM

Type of Marker SRD DISC ON CONG. HDWL. Date set NOV. - DEC. 19 80

HORIZONTAL CONTROL originated on \_\_\_\_\_ order control established by \_\_\_\_\_ agency

in \_\_\_\_\_, on North American 1927 datum.

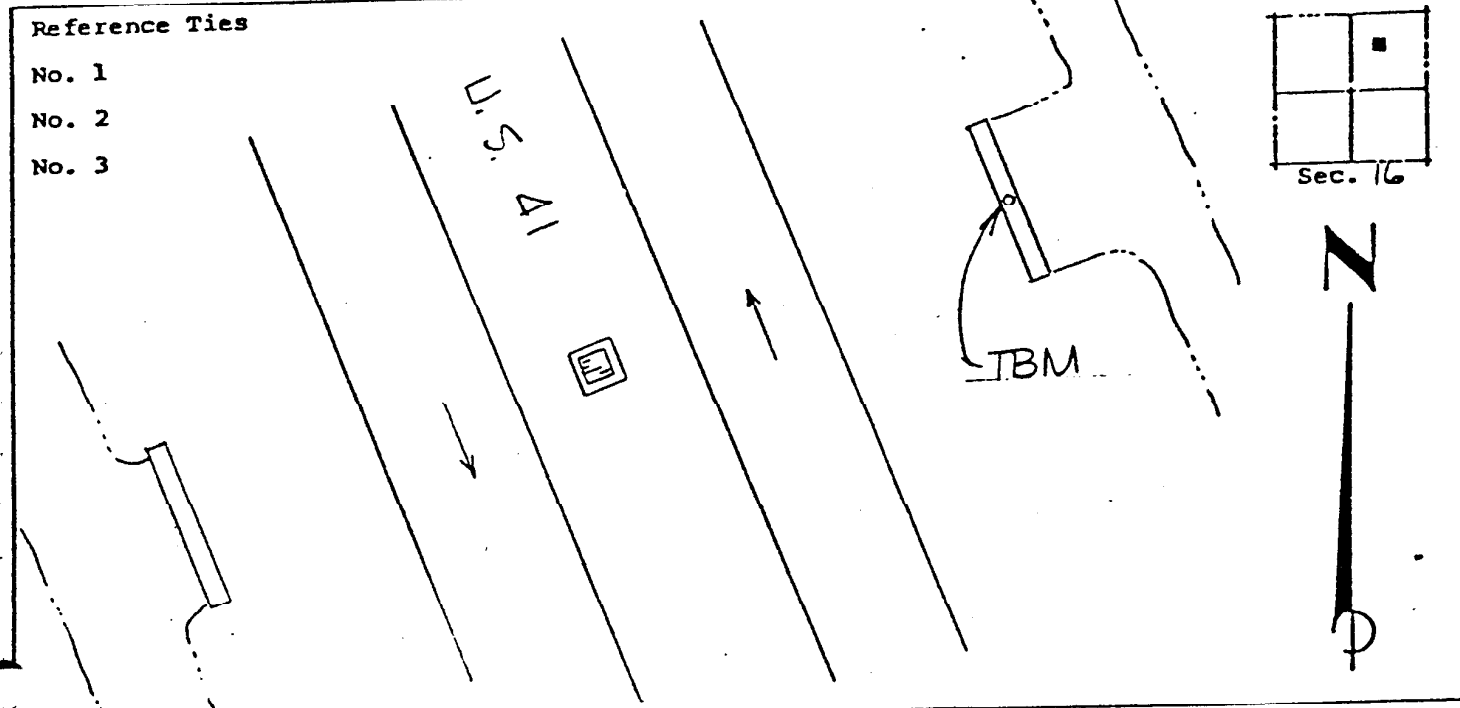
Coordinates: North (y) \_\_\_\_\_ East (x) \_\_\_\_\_

(feet) 3rd Order State and Zone Florida, Mercator West

Reference Bearings to Station or Object:

Description	Bearing	Distance

Field Book 1 Page \_\_\_\_\_ Sketch by D.W. ALBERTSEN



VERTICAL CONTROL originated on 1st order control established by U.S.C. & G.S. agency

in 1966, on National Geodetic Survey Datum of 1929 datum.

Elevation 19.57, 3rd Order Level Book 3 Page 43