



Deni Associates
FORT MYERS, FLORIDA

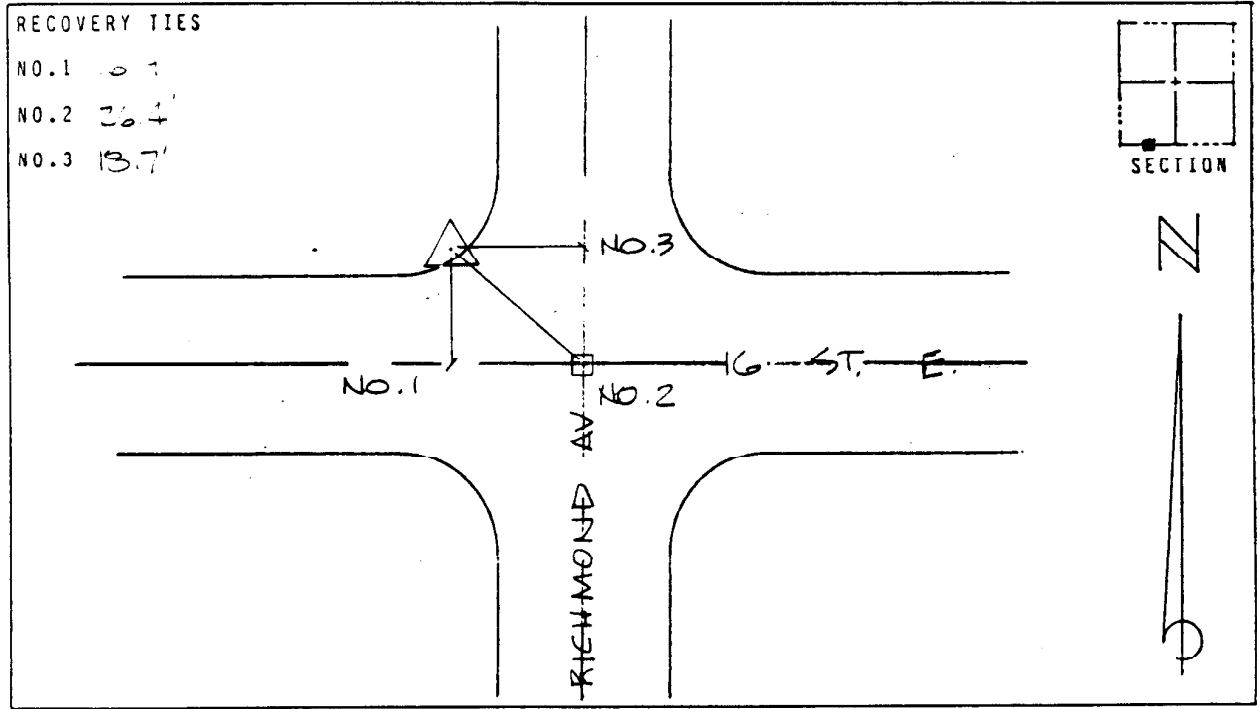
LEE COUNTY, FLORIDA
AERIAL MAPPING PROJECT

MAPPING BY:
WOOLPERT CONSULTANTS

DESIGNATION LH-50 & TRM COUNTY LEE STATE FL
 LOCATED IN SEC 9 TWP 44S RGE 27 E USGS QUAD MAP OLGA
 TO REACH SURVEY MARK FROM _____
AT INTERSECTION AS SHOWN IN LEHIGH ACRES.

TYPE OF 2" ALUMI. CAP ON RE-BAR
 MARK 1" BLW. GRD. DATE SET AUGUST 1988
 HORIZONTAL CONTROL ORIGINATED ON 2ND ORDER CONTROL BY N.G.S. AND F.D.O.T.
 ON NORTH AMERICAN DATUM OF 1927 (1927 ADJ) ON NORTH AMERICAN DATUM OF 1983
 COORDINATES (FT) COORDINATES (FT)
 NORTHING (Y) 311,984.773 NORTHING (Y) _____
 EASTING (X) 622,213.941 EASTING (X) _____
3RD ORDER COORDINATES STATE AND ZONE FLORIDA, MERCATOR WEST

FIELD BOOK HB PAGE 57 SKETCH BY DSW



VERTICAL CONTROL ORIGINATED ON 2ND ORDER CONTROL ESTABLISHED BY N.G.S. AND F.D.O.T.
 ON NATIONAL GEODETIC VERTICAL DATUM OF 1929
 ELEVATION (FEET) 20.91 . 3RD ORDER LEVEL BOOK V 18 PAGE B