



Deni Associates
FORT MYERS, FLORIDA

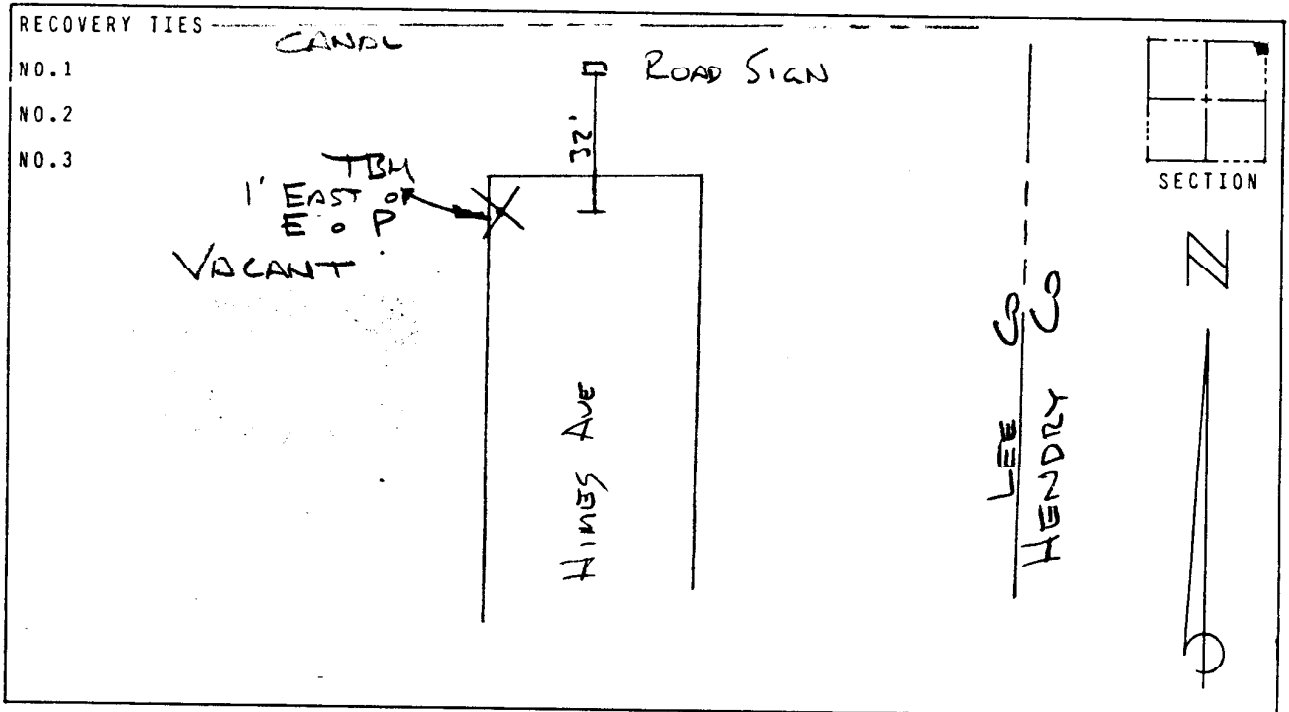
LEE COUNTY, FLORIDA
AERIAL MAPPING PROJECT

MAPPING BY:
WOOLPERT CONSULTANTS

DESIGNATION TBM 18-25 COUNTY LEE STATE FL
 LOCATED IN SEC 12 TWP 45 RGE 27 E. USGS QUAD MAP ALVA
 TO REACH SURVEY MARK FROM HIMES AVE & 19 ST E IN LEHIGH
ACRES; GO NORTH 0.25 MILES TO CANAL
DEAD END & MARK.

TYPE OF RR SPIKE DRIVEN FLUSH IN PAVEMENT
 MARK _____ DATE SET SEPT. 1988
 HORIZONTAL CONTROL ORIGINATED ON 2ND ORDER CONTROL BY N.G.S. AND F.D.O.T.
 ON NORTH AMERICAN DATUM OF 1927 (1927 ADJ) ON NORTH AMERICAN DATUM OF 1983
 COORDINATES (FT) _____ COORDINATES (FT) _____
 NORTHING (Y) _____ NORTHING (Y) _____
 EASTING (X) _____ EASTING (X) _____
3RD ORDER COORDINATES STATE AND ZONE FLORIDA, MERCATOR WEST

FIELD BOOK _____ PAGE _____ SKETCH BY PLW



VERTICAL CONTROL ORIGINATED ON 2ND ORDER CONTROL ESTABLISHED BY N.G.S. AND F.D.O.T.
 ON NATIONAL GEODETIC VERTICAL DATUM OF 1929
 ELEVATION (FT) 24.37 . 3RD ORDER LEVEL BOOK V 18 PAGE 25