

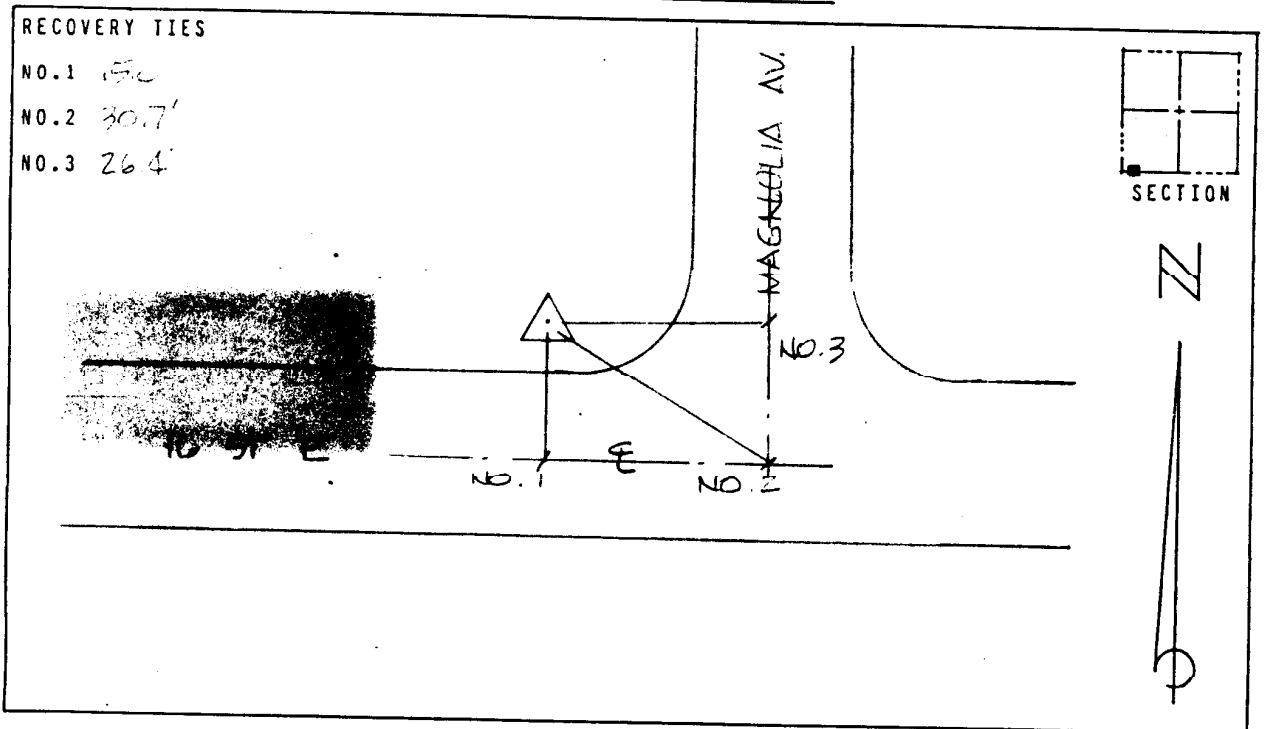
LEE COUNTY, FLORIDA
AERIAL MAPPING PROJECT

MAPPING BY:
WOOLPERT CONSULTANTS

DESIGNATION 1151 & TBM COUNTY LEE STATE FL
LOCATED IN SEC 8 TWP 44S RGE 27E USGS QUAD MAP OLGA
TO REACH SURVEY MARK FROM AT INTERSECTION AS SHOWN IN LEHIGH ACRES.

TYPE OF 2" ALUM. CAP ON RE-BAR
MARK 1" BOLLARD DATE SET JULY 1988
HORIZONTAL CONTROL ORIGINATED ON 2ND ORDER CONTROL BY N.G.S. AND F.D.O.T.
ON NORTH AMERICAN DATUM OF 1927 (1927 ADJ) ON NORTH AMERICAN DATUM OF 1983
COORDINATES (FT) COORDINATES (FT)
NORTHING (Y) 844,395.994 NORTHING (Y) [REDACTED]
EASTING (X) 515,547.169 EASTING (X) [REDACTED]
3RD ORDER COORDINATES STATE AND ZONE FLORIDA, MERCATOR WEST

FIELD BOOK H 3 PAGE 53 SKETCH BY DSW



VERTICAL CONTROL ORIGINATED ON 2ND ORDER CONTROL ESTABLISHED BY N.G.S. AND F.D.O.T.
ON NATIONAL GEODETIC VERTICAL DATUM OF 1929
ELEVATION (FT): 19.72 . 3RD ORDER LEVEL BOOK V 18 PAGE 8