



Deni Associates  
FORT MYERS, FLORIDA

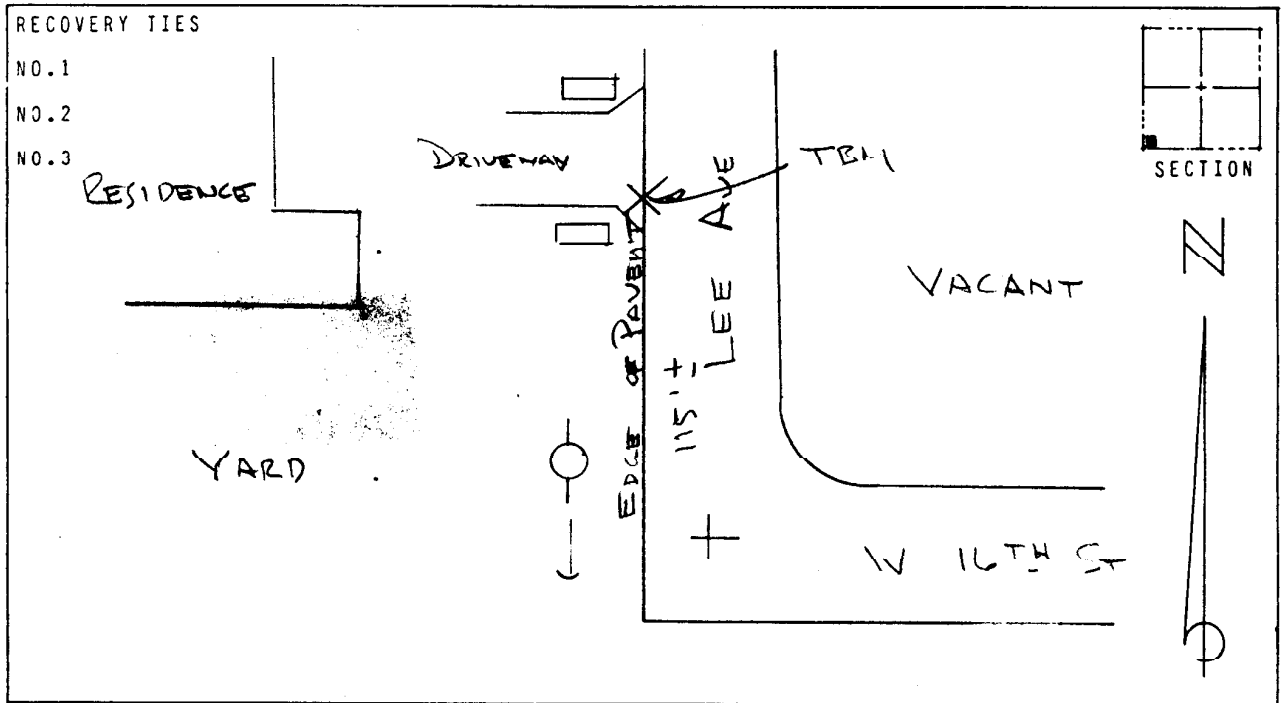
LEE COUNTY, FLORIDA  
AERIAL MAPPING PROJECT

MAPPING BY:  
WOOLPERT CONSULTANTS

DESIGNATION TBM 18-7 COUNTY LEE STATE FL  
LOCATED IN SEC 7 TWP 44S RGE 27E USGS QUAD MAP OLGA  
TO REACH SURVEY MARK FROM \_\_\_\_\_  
AT INTERSECTION AS SHOWN IN  
LOWHIGH ACRES.

TYPE OF RR SPIKE FLUSH AT SEAM OF ROAD & DRIVE  
MARK \_\_\_\_\_ DATE SET SEPT. 1988  
HORIZONTAL CONTROL ORIGINATED ON 2ND ORDER CONTROL BY N.G.S. AND F.D.O.T.  
ON NORTH AMERICAN DATUM OF 1927 (1927 ADJ) ON NORTH AMERICAN DATUM OF 1983  
COORDINATES (FT) COORDINATES (FT)  
NORTHING (Y) \_\_\_\_\_ NORTHING (Y) \_\_\_\_\_  
EASTING (X) \_\_\_\_\_ EASTING (X) \_\_\_\_\_  
3RD ORDER COORDINATES STATE AND ZONE FLORIDA, MERCATOR WEST

FIELD BOOK \_\_\_\_\_ PAGE \_\_\_\_\_ SKETCH BY RLW



VERTICAL CONTROL ORIGINATED ON 2ND ORDER CONTROL ESTABLISHED BY N.G.S. AND F.D.O.T.  
ON NATIONAL GEODETIC VERTICAL DATUM OF 1929  
ELEVATION (FT) 20.66, 3RD ORDER LEVEL BOOK V 13 PAGE 7