

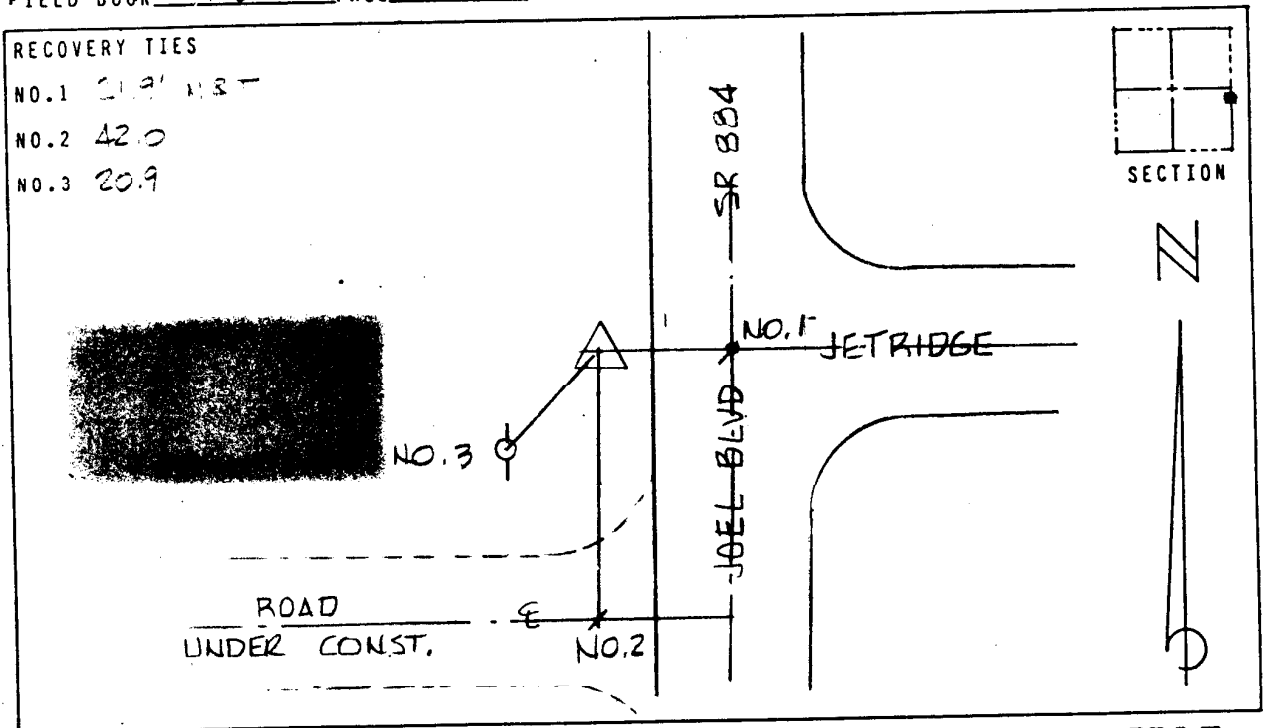
LEE COUNTY, FLORIDA
AERIAL MAPPING PROJECT

MAPPING BY:
WOOLPERT CONSULTANTS

DESIGNATION [REDACTED] 43 COUNTY LEE STATE FL
LOCATED IN SEC 3 TWP 24.5 RGE 27 E USGS QUAD MAP ALVA
TO REACH SURVEY MARK FROM AT INTERSECTION AS SHOWN IN LEHIGH ACRES.

TYPE OF CONCRETE CAP ON IRON BAR
MARK 31 BLM 629 DATE SET JULY 1988
HORIZONTAL CONTROL ORIGINATED ON 2ND ORDER CONTROL BY N.G.S. AND F.D.O.T.
ON NORTH AMERICAN DATUM OF 1927 (1927 ADJ) ON NORTH AMERICAN DATUM OF 1983
COORDINATES (FT) COORDINATES (FT)
NORTHING (Y) 872,605.128 NORTHING (Y) [REDACTED]
EASTING (X) 631,059.304 EASTING (X) [REDACTED]
3RD ORDER COORDINATES STATE AND ZONE FLORIDA, MERCATOR WEST

FIELD BOOK 43 PAGE 50 SKETCH BY DSW



VERTICAL CONTROL ORIGINATED ON 2ND ORDER CONTROL ESTABLISHED BY N.G.S. AND F.D.O.T.
ON NATIONAL GEODETIC VERTICAL DATUM OF 1929
ELEVATION (FT) 19.36 . 3RD ORDER LEVEL BOOK V 18 PAGE 11