



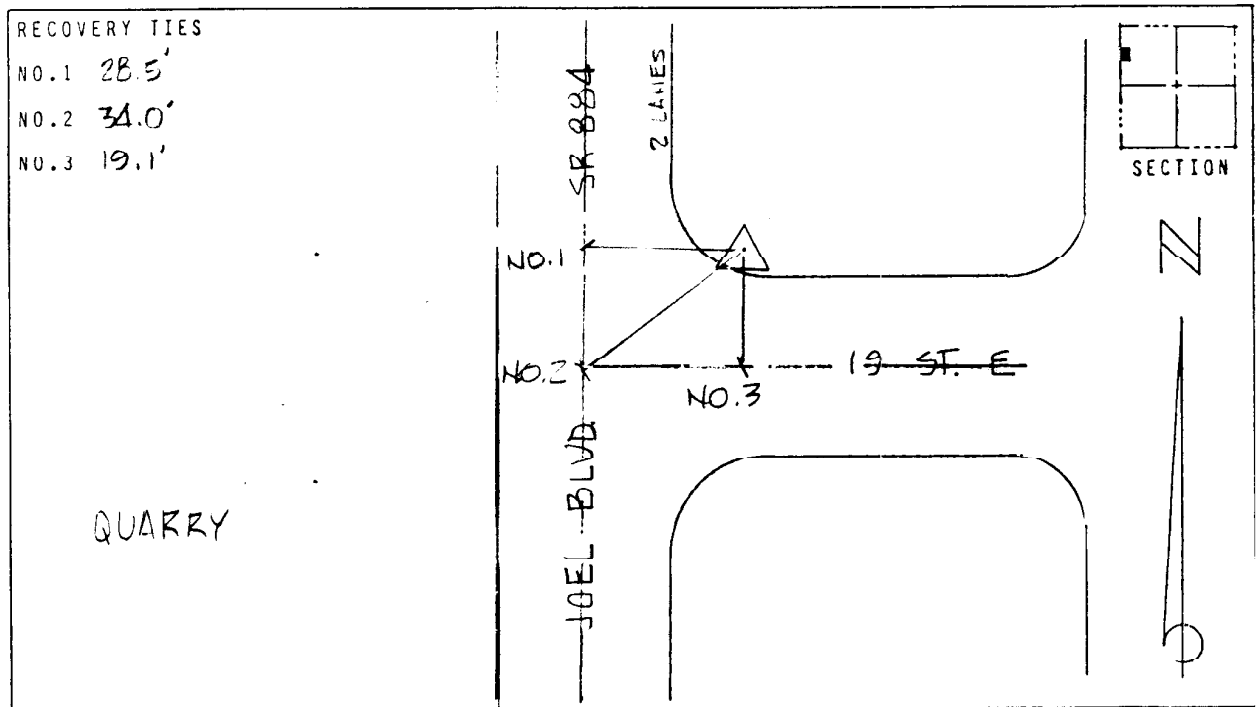
LEE COUNTY, FLORIDA
AERIAL MAPPING PROJECT

MAPPING BY:
WOOLPERT CONSULTANTS

DESIGNATION LH 42 COUNTY LEE STATE FL
LOCATED IN SEC 11 TWP 4 S. RGE 27 E. USGS QUAD MAP ALVA
TO REACH SURVEY MARK FROM _____
AT INTERSECTION AS SHOWN

TYPE OF 2" ALUM. CAP ON RE-BAR
MARK 3" BLW. GRD. DATE SET AUGUST 1988
HORIZONTAL CONTROL ORIGINATED ON 2ND ORDER CONTROL BY N.G.S. AND F.D.O.T.
ON NORTH AMERICAN DATUM OF 1927 (1927 ADJ) ON NORTH AMERICAN DATUM OF 1983
COORDINATES (FT) COORDINATES (FT)
NORTHING (Y) 848,976.676 NORTHING (Y) _____
EASTING (X) 631,195.235 EASTING (X) _____
3RD ORDER COORDINATES STATE AND ZONE FLORIDA, MERCATOR WEST

FIELD BOOK HB PAGE 49 SKETCH BY PSW



VERTICAL CONTROL ORIGINATED ON 2ND ORDER CONTROL ESTABLISHED BY N.G.S. AND F.D.O.T.
ON NATIONAL GEODETIC VERTICAL DATUM OF 1929

ELEVATION (FT) 21.38 3RD ORDER LEVEL BOOK V 18 PAGE 11