



Deni Associates
FORT MYERS, FLORIDA

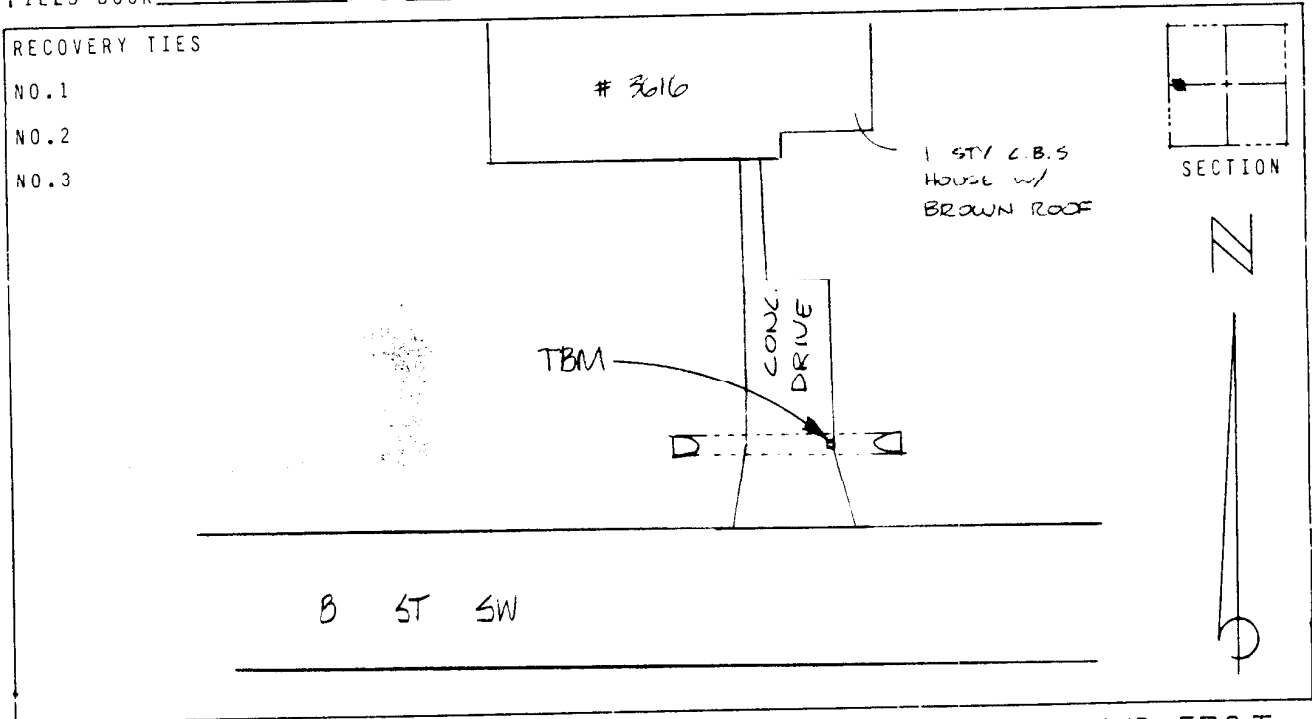
LEE COUNTY, FLORIDA
AERIAL MAPPING PROJECT

MAPPING BY:
WOOLPERT CONSULTANTS

DESIGNATION TBM 18-60 COUNTY LEE STATE FL
LOCATED IN SEC 35 TWP 44S RGE 26E USGS QUAD MAP ALVA SW
TO REACH SURVEY MARK FROM B ST SW & Terry Av. IN LEHIGH
ACRES, 60 WEST 500' TO ADDRESS #3616 B ST SW & MARK.

TYPE OF CHISELED "FI" ON CONG. DRIVE OVER CULVERT
MARK _____ DATE SET DEC. 1988
HORIZONTAL CONTROL ORIGINATED ON 2ND ORDER CONTROL BY N.G.S. AND F.D.O.T.
ON NORTH AMERICAN DATUM OF 1927 (1927 ADJ) ON NORTH AMERICAN DATUM OF 1983
COORDINATES (FT) _____ COORDINATES (FT) _____
NORTHING (Y) _____ NORTHING (Y) _____
EASTING (X) _____ EASTING (X) _____
3RD ORDER COORDINATES STATE AND ZONE FLORIDA, MERCATOR WEST

FIELD BOOK _____ PAGE _____ SKETCH BY DSW



VERTICAL CONTROL ORIGINATED ON 2ND ORDER CONTROL ESTABLISHED BY N.G.S. AND F.D.O.T.
ON NATIONAL GEODETIC VERTICAL DATUM OF 1929
ELEVATION (FT) 27.03 , 3RD ORDER LEVEL BOOK V 18 PAGE 60