



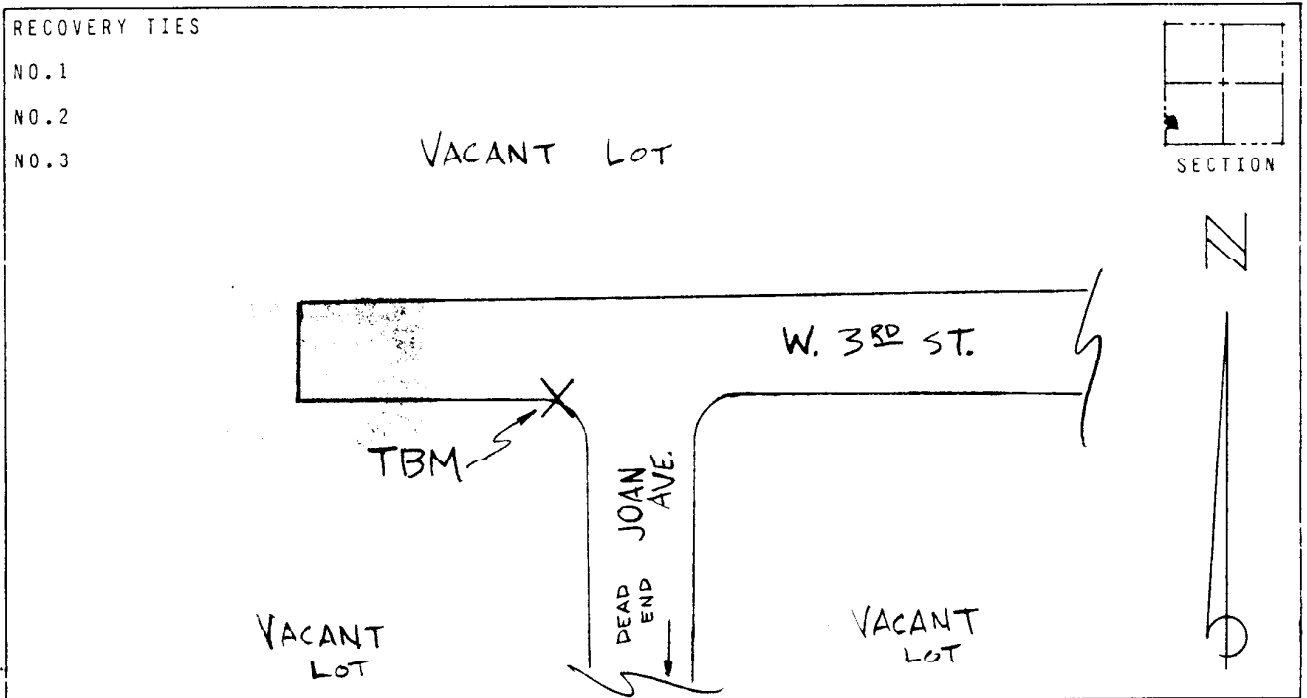
Deni Associates  
FORT MYERS, FLORIDA

LEE COUNTY, FLORIDA  
AERIAL MAPPING PROJECT  
MAPPING BY:  
WOOLPERT CONSULTANTS

DESIGNATION TBM 19-41 COUNTY LEE STATE FL  
LOCATED IN SEC 23 TWP 40S RGE 26E USGS QUAD MAP ALVA SW  
TO REACH SURVEY MARK FROM AT INTERSECTION AS SHOWN  
IN LEHIGH ACRES

TYPE OF 8" SPIKE & TIN FLUSH WITH PAVEMENT  
MARK \_\_\_\_\_ DATE SET DEC. 1988  
HORIZONTAL CONTROL ORIGINATED ON 2ND ORDER CONTROL BY N.G.S. AND F.D.O.T.  
ON NORTH AMERICAN DATUM OF 1927 (1927 ADJ) ON NORTH AMERICAN DATUM OF 1983  
COORDINATES (FT) COORDINATES (FT)  
NORTHING (Y) \_\_\_\_\_ NORTHING (Y) \_\_\_\_\_  
EASTING (X) \_\_\_\_\_ EASTING (X) \_\_\_\_\_  
3RD ORDER COORDINATES STATE AND ZONE FLORIDA, MERCATOR WEST

FIELD BOOK \_\_\_\_\_ PAGE \_\_\_\_\_ SKETCH BY WGH



VERTICAL CONTROL ORIGINATED ON 2ND ORDER CONTROL ESTABLISHED BY N.G.S. AND F.D.O.T.  
ON NATIONAL GEODETIC VERTICAL DATUM OF 1929  
ELEVATION (FT) 24.21 , 3RD ORDER LEVEL BOOK V19 PAGE 47