



7025 N.W. 4th St. - Plantation, Florida 33317

U.S.D.A. SOIL CONSERVATION SERVICE

MAPPING BY

HAMRICK AERIAL SURVEYS, INC.
CLEARWATER, FLORIDA

Marker Designation TBM SV-50 County LEE State FL

Located in Sec. 10 Twp. 43 S. Rge. 21 E. U.S.G.S. Quad Map FT. MYERS NW 7.5min.

To reach point from INT. OF S.R. 78/BAYSHORE RD. AND U.S. 41/CLEVELAND
RD. GO N. 4.25 MI ± TO GRADED DIRT RD - ENE; GO ENE
0.25 MI ± TO "Y"; THENCE N. 450 FT. ± TO 90° CURVE E.;
THENCE E. 0.25 MI ± TO TBM.

Type of Marker 8" SPK IN P. POLE Date set NOV. - DEC. 19 80

HORIZONTAL CONTROL originated on _____ order control established by _____ agency

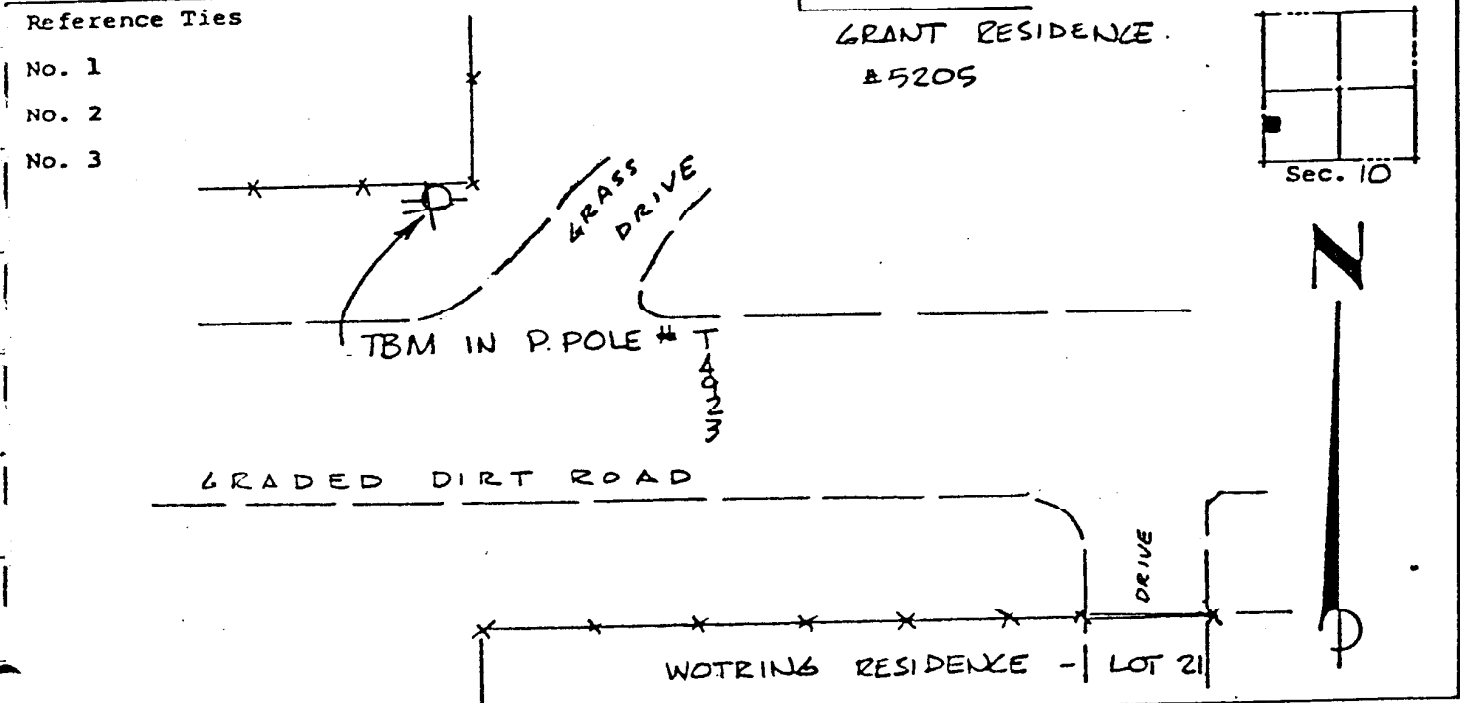
in _____, on North American 1927 datum.

Coordinates: North (y) _____ East (x) _____
(feet)

Reference Bearings to Station or Object: 3rd Order State and Zone Florida, Mercator West

Description	Bearing	Distance

Field Book 1 Page _____ Sketch by D.W. ALBERTSEN



VERTICAL CONTROL originated on 1ST order control established by U.S.C. & G.S. agency

In 1966, on National Geodetic Survey Datum of 1929 datum.

year 1966 Elevation 21.46, 3rd Order Level Book 3 Page 68